

Operator System Enclosures

Operator System Enclosures

Saginaw Control & Engineering's Type 12 Operator Systems are designed to house a wide variety of equipment; panel mount, rack mount, desktop PC's, monitors, keyboards and panel views.

These enclosures are primarily used in an indoor environment to protect against dust, falling dirt, dropping of non-corrosive liquid, and light splashing of water.

Product Attributes

- One-piece construction allows flexibility and maximizes the usable interior space.
- Memory retaining oil resistant urethane gasket.
- Exclusive SCE concealed hinges on Work Station Enclosures.
- Work Stations are available in textured beige or 304 stainless steel.
- Slope Top Workstations have 15 degree sloped top and 12.5 degree sloped keyboard desk.
- Operator system enclosures can be custom ordered in type 304 or 316 stainless steel.
- Many accessories available.

Product Overview

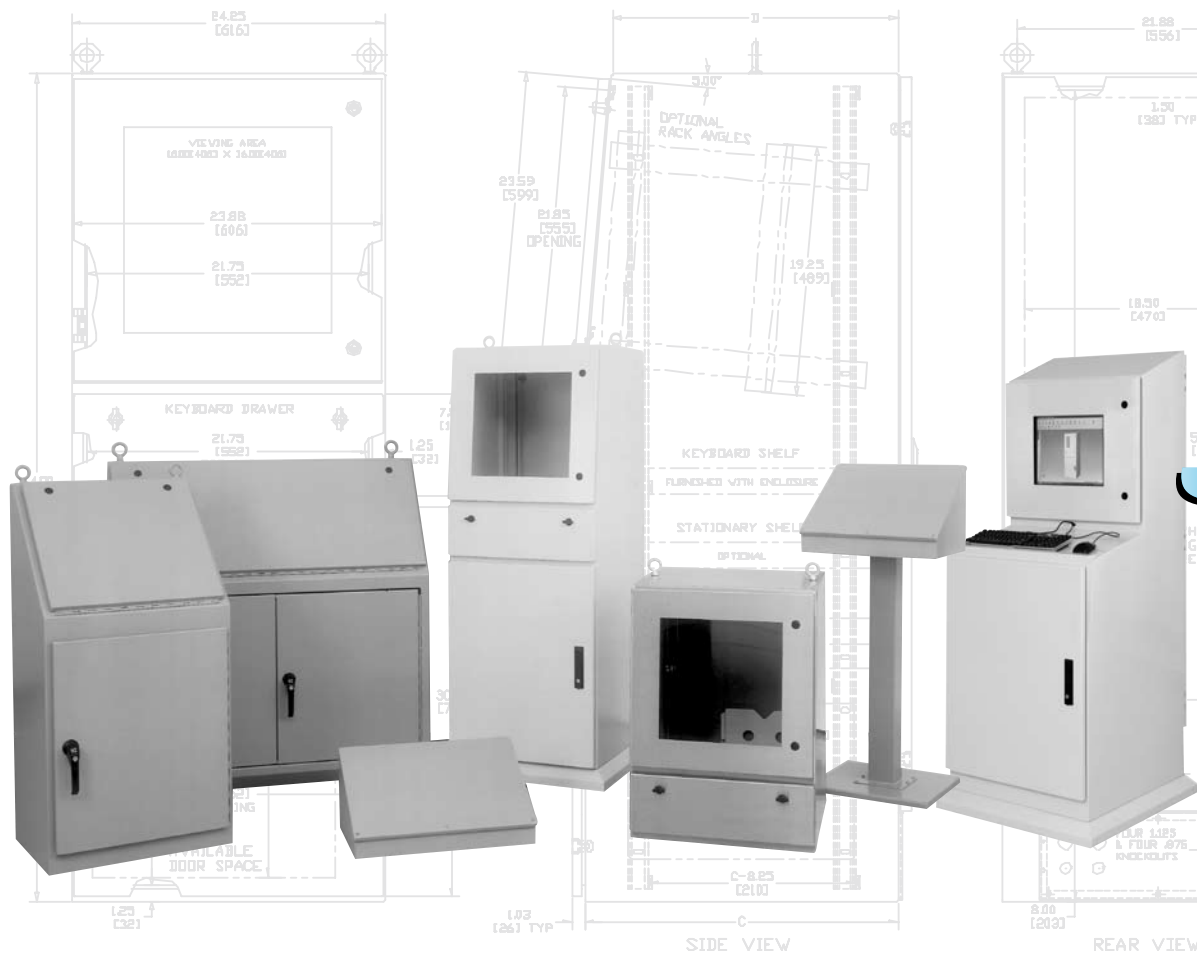
- Consolets
- Series 9 Consoles
- Series 14 Single Door Consoles
- Series 14 Two Door Consoles
- Series 14 Accessories
- Work Stations, Stainless & Steel
- Slope Top Workstation, Stainless & Steel
- Pedestal Mounted or Desk Top Work Stations, Stainless & Steel
- Work Station Accessories

Phone (989) 799-6871

Fax (989) 799-4524



Operator System Enclosures



Phone (989) 799-6871
Fax (989) 799-4524



TYPE 12 Consoles & Accessories

Application -

Designed to house electrical and electronic controls, instruments, and components. Provides protection from dust, dirt, oil and water. Consoles can be mounted on either of two sides to give a control surface inclined 30° or 60°. Can be mounted on desks, machines, or pedestals.

Construction -

- 0.075" carbon steel.
- Seams continuously welded and ground smooth, no holes or knock-outs.
- Captivated cover screws thread into sealed wells.
- Door attached with continuous hinge.
- Oil-resistant gasket.
- Ground stud on door.

Finish -

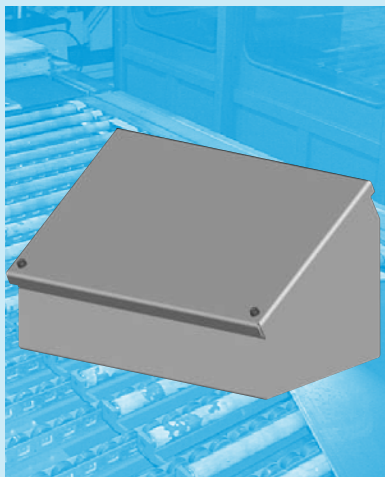
ANSI-61 gray powder coating inside and out.

Note -

May also be ordered in Type 304 and Type 316 Stainless Steel.

Industry Standards -

NEMA Type 12 & Type 13
UL Listed Type 12
CSA Type 12
IEC 60529 IP 55

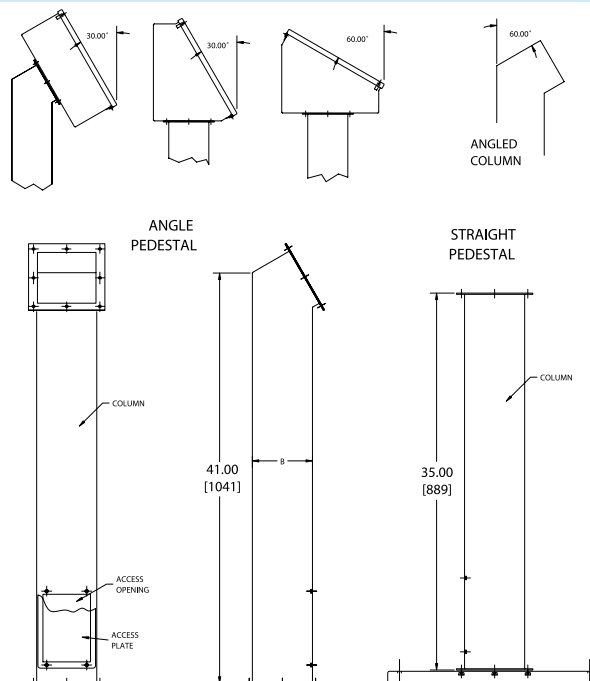


TYPE 12 CONSOLES

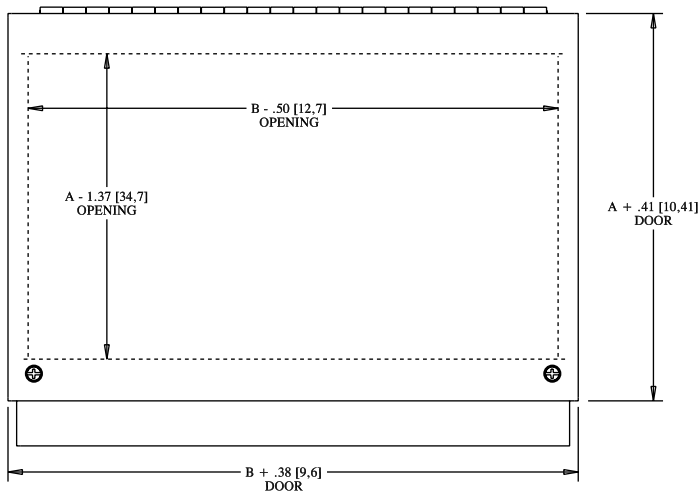
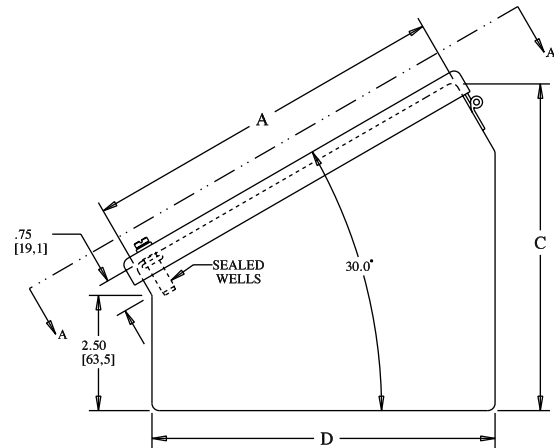
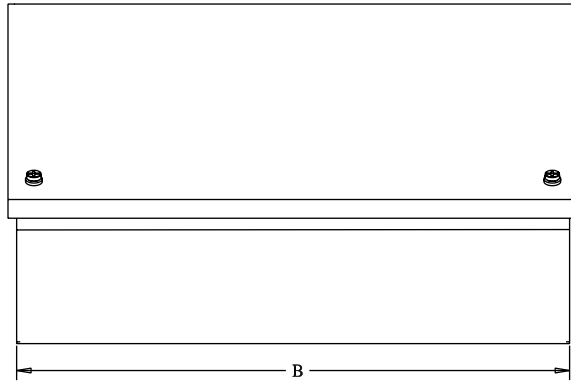
ENCLOSURES						
Catalog No.	Height (A)	Width (B)	Depth (C)	Depth (D)	Product Code	List Price
SCE-8C8	8.00	8.00	7.09	7.44	A1	102.84
SCE-8C12	8.00	12.00	7.09	7.44	A1	112.87
SCE-8C16	8.00	16.00	7.09	7.44	A1	125.41
SCE-8C20	8.00	20.00	7.09	7.44	A1	135.44
SCE-12C12	12.00	12.00	9.09	10.91	A1	132.93
SCE-12C16	12.00	16.00	9.09	10.91	A1	147.97
SCE-12C20	12.00	20.00	9.09	10.91	A1	163.03
SCE-12C24	12.00	24.00	9.09	10.91	A1	175.57
SCE-16C16	16.00	16.00	11.09	14.38	A1	173.05
SCE-16C20	16.00	20.00	11.09	14.38	A1	190.63
SCE-16C24	16.00	24.00	11.09	14.38	A1	208.17
SCE-16C30	16.00	30.00	11.09	14.38	A1	238.27
SCE-16C36	16.00	36.00	11.09	14.38	A1	268.37
SCE-20C20	20.00	20.00	13.09	17.84	A1	218.21
SCE-20C24	20.00	24.00	13.09	17.84	A1	243.28
SCE-20C30	20.00	30.00	13.09	17.84	A1	278.41

ACCESSORY COLUMNS AND BASES

Catalog No.	Description	Size	Product Code	List Price
SCE-18SBASE	Pedestal Base	18.00 x 18.00 x 1.00	P2	111.76
SCE-24SBASE	Pedestal Base	24.00 x 24.00 x 1.00	P2	253.32
SCE-44CCOL	Straight Column	4.00 x 4.00	P2	183.79
SCE-44PBCOL	Angled Column	4.00 x 4.00	P2	218.56
SCE-66CCOL	Straight Column	6.00 x 6.00	P2	275.68
SCE-66PBCOL	Angled Column	6.00 x 6.00	P2	327.83



TYPE 12 CONSOLES



VIEW A-A

TYPE 12

Series 9 Consoles

Application -

Designed for electronic controls and instruments. Equipment can be mounted on the sloping control panel door. Interior components mount to stationary panels. Provides protection from dirt, oil, dust and water.

Construction -

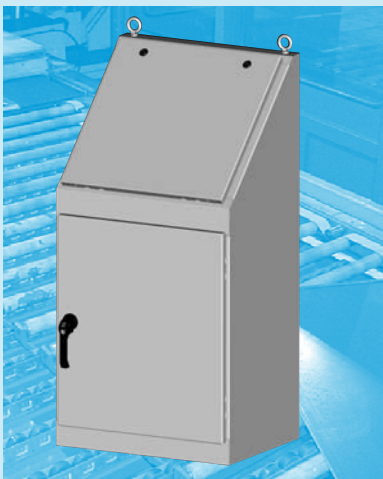
- 0.075" carbon steel.
- Sloping control panel attached with concealed hinge on bottom edge.
- Door opens to 90°.
- Black zinc die cast keylocking/padlocking handle.
- 3 point latching mechanism.
- Seams continuously welded and ground smooth.
- Oil-resistant gasket on door.
- Interior print pocket.
- Optional back and side panels are mounted on collar studs.
- Removable eyebolts.
- Ground stud on door.

Finish -

ANSI-61 gray powder coating inside and out. Optional panels are powder coated white.

Industry Standards -

NEMA Type 12 & Type 13
UL Listed Type 12
CSA Type 12
IEC 60529 IP 55



TYPE 12

SERIES 9 CONSOLES

ENCLOSURES						SUB-PANEL					
Catalog No.	Height (A)	Width (B)	Depth (C)	Product Code	List Price	Qty.	Catalog No.	Panel Height (D)	Panel Width (E)	Product Code	List Price
SCE-924B	48.00	24.00	18.00	C1	1,210.24	3	SCE-30P20	27.00	17.00	P3	55.70
SCE-936B	48.00	36.00	18.00	C1	1,486.22	2	SCE-30P20	27.00	17.00	P3	55.70
						1	SCE-30P30 ^{AND}	27.00	27.00	P3	83.55

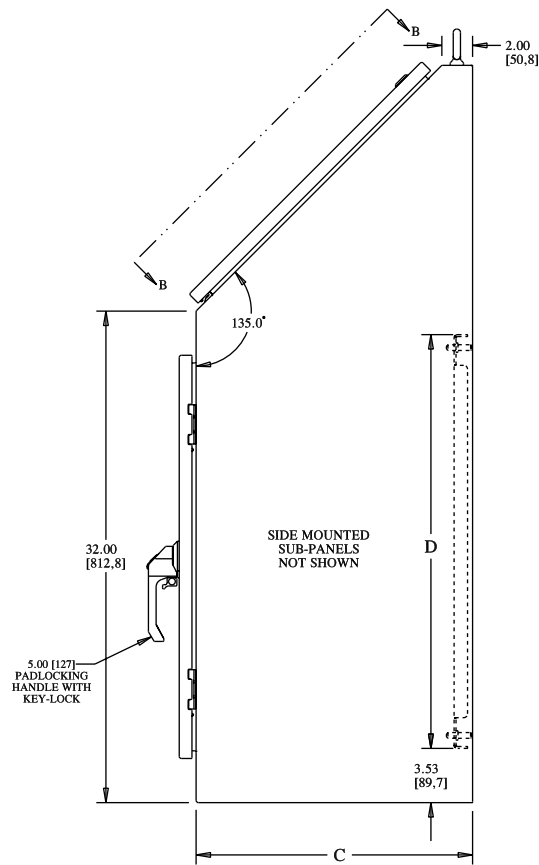
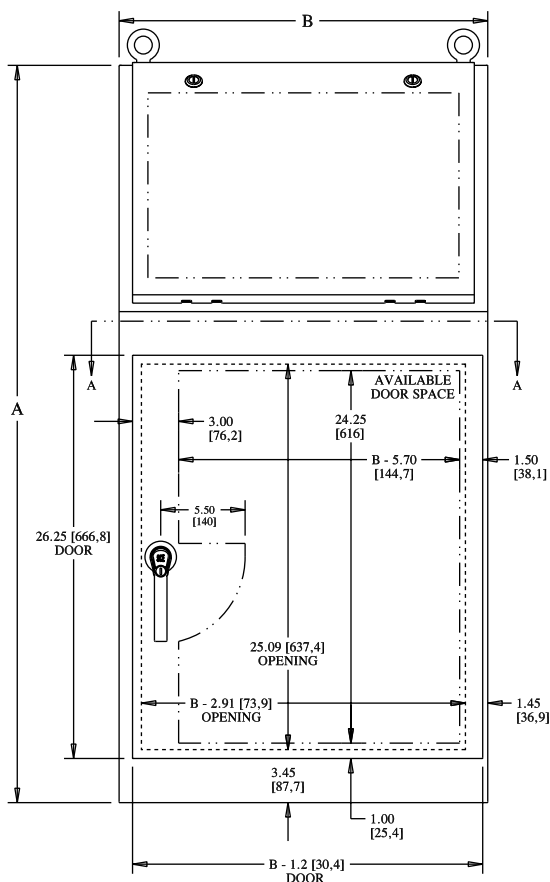
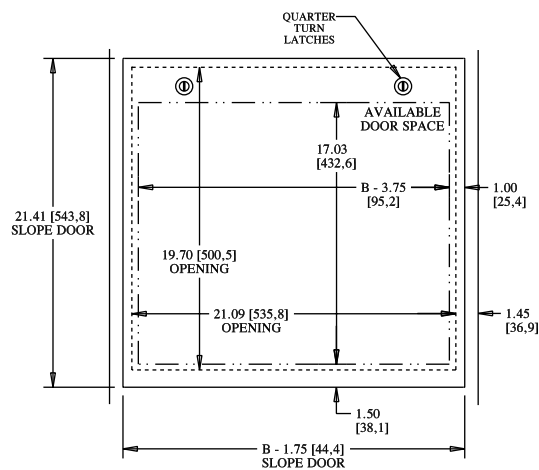
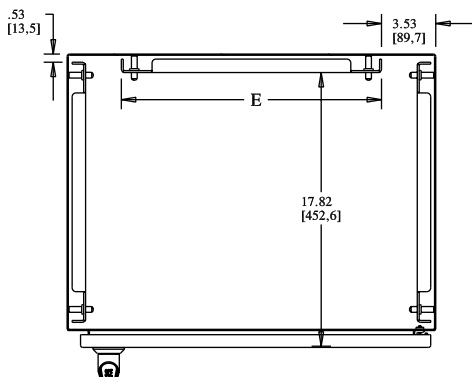
Phone (989) 799-6871

Fax (989) 799-4524



TYPE 12 SERIES 9 CONSOLES

TECHNICAL DATA



TYPE 12

Series 14

Single Door Consoles

Application -

Designed for electronic controls and instruments. Equipment can be mounted on the sloping control panel door. Interior components mount to stationary panels. Heavy duty construction provides protection from dirt, oil, dust, and water.

Construction -

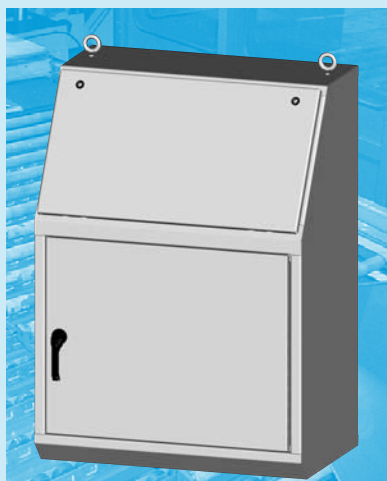
- 0.104" carbon steel.
- Sloping control panel attached with concealed hinge on bottom edge. Door opens to 90°.
- Black zinc die cast keylocking/padlocking handles on front and rear doors.
- 3 point latching mechanism.
- Seams continuously welded and ground smooth.
- Oil-resistant gasket on door
- Optional equipment mount to horizontal channels welded to sides.
- Flush mounted doors.
- Optional writing desk and top section available.
- Interior print pocket.
- Removable eyebolts in console body.
- Ground stud on door.

Finish -

ANSI-61 gray powder coating inside and out. Optional panels are powder coated white.

Industry Standards -

NEMA Type 12 & Type 13
UL Listed Type 12
CSA Type 12
IEC 60529 IP 55



TYPE 12

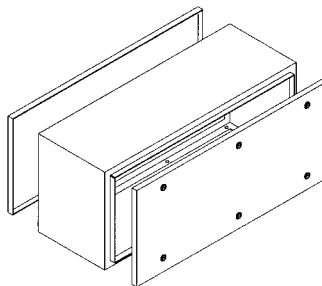
SERIES 14 SINGLE DOOR CONSOLES - 24" WIDE

ENCLOSURES						
Catalog No.	Description	Height (A)	Width (B)	Depth (C)	Product Code	List Price
SCE-14B	Console Body	50.00	24.00	23.00	C1	1,777.39
SCE-14T	Console Top	16.00	24.00	12.50	C1	453.21
SCE-14P1	Swing-Out Panel	22.00	18.12		P2	168.79
SCE-14P2	Half Panel	22.00	17.00		P3	144.32
SCE-14P3	Full Panel	42.25	17.00		P3	207.61
SCE-14R	Rack Angles	29.00 High (set of 2)			P2	149.50
SCE-14W	Writing Desk	24.00	10.00		P2	135.04

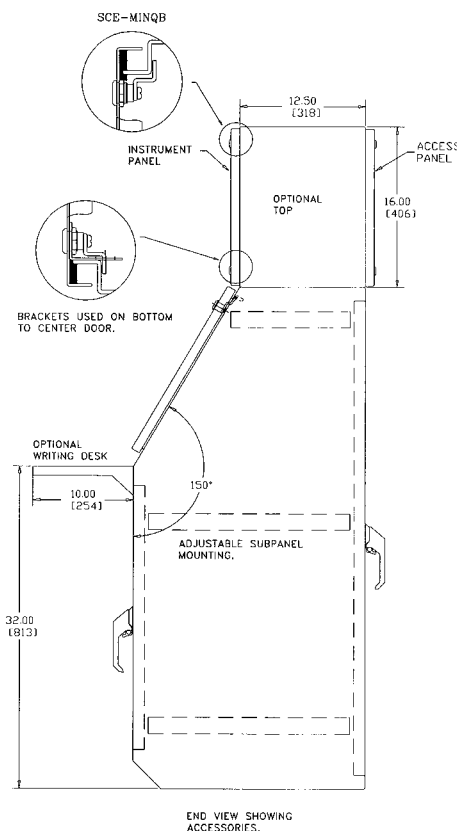
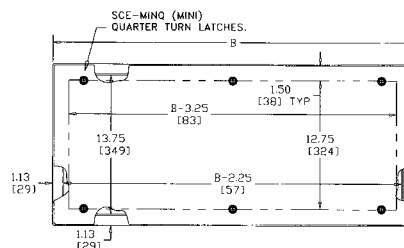
TYPE 12

SERIES 14 SINGLE DOOR CONSOLES - 36" WIDE

ENCLOSURES						
Catalog No.	Description	Height (A)	Width (B)	Depth (C)	Product Code	List Price
SCE-1436B	Console Body	50.00	36.00	23.00	C1	2,078.69
SCE-1436T	Console Top	16.00	36.00	12.50	C1	562.08
SCE-1436P1	Swing-Out Panel	22.00	30.12		P2	209.78
SCE-1436P2	Half Panel	22.00	29.00		P3	177.24
SCE-1436P3	Full Panel	42.25	29.00		P3	273.44
SCE-1436W	Writing Desk	36.00	10.00		P2	173.62

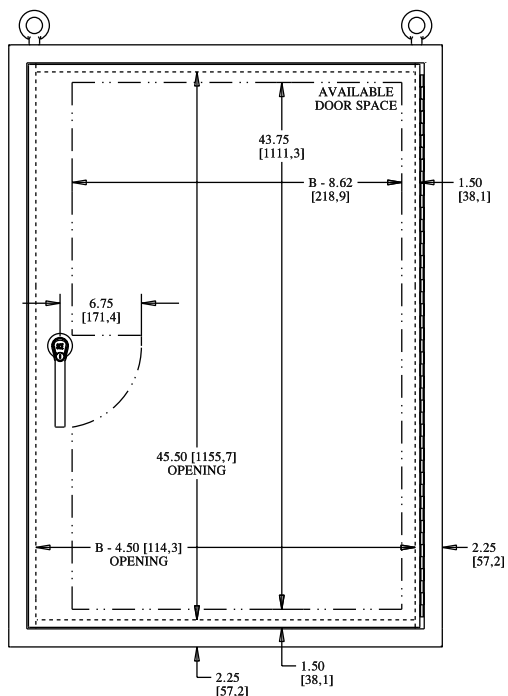
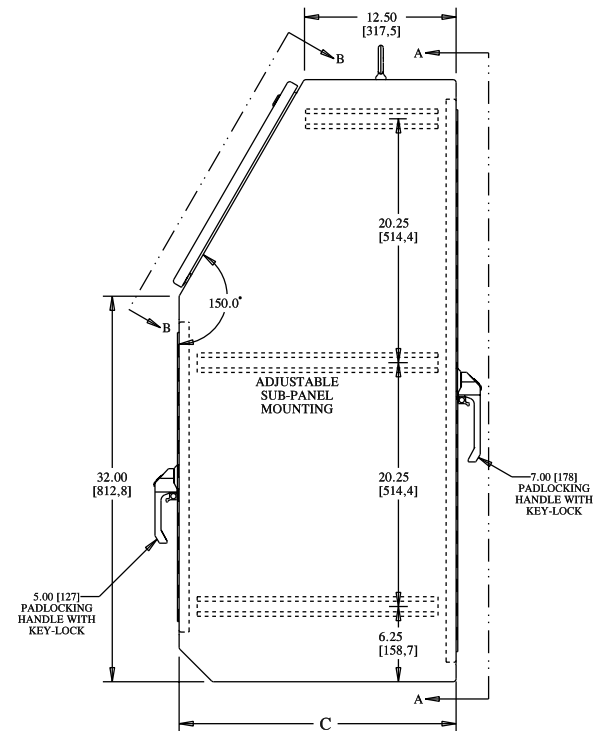
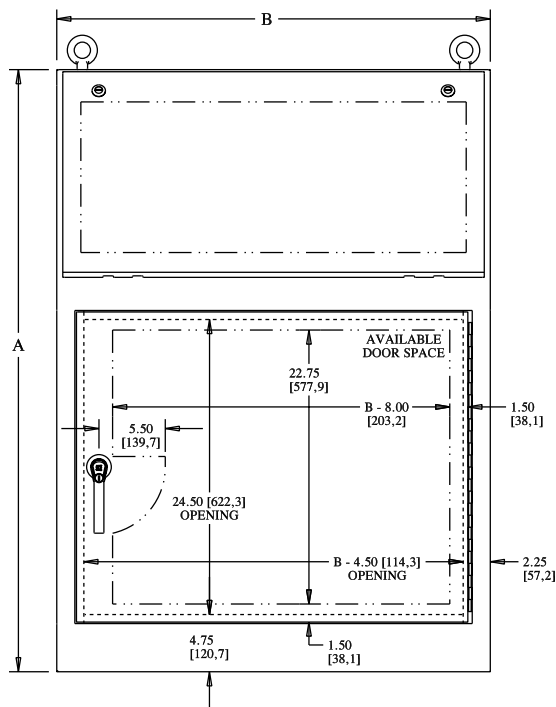


Optional top with one door on front & back, for enclosures less than 48.00" [1219] wide.

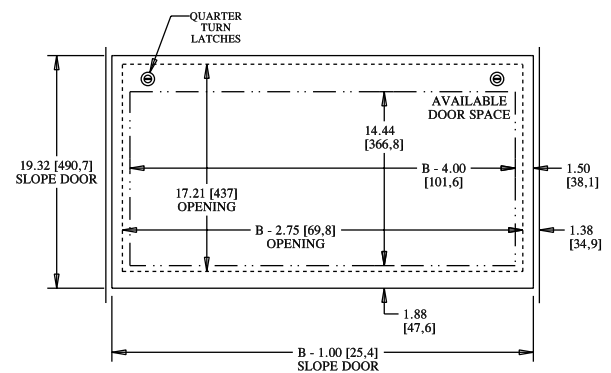


TYPE 12 SERIES 14 SINGLE DOOR CONSOLES

TECHNICAL DATA



VIEW A-A



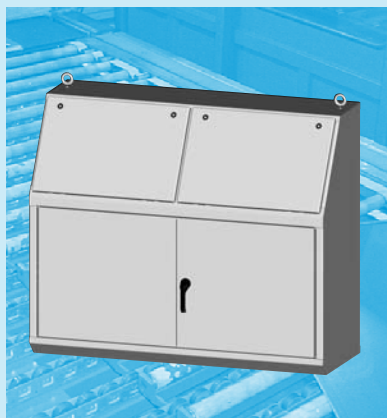
VIEW B-B

Designed for electronic controls and instruments. Equipment can be mounted on the sloping control panel door. Interior components mount to stationary panels. Heavy duty construction provides protection from dirt, oil, dust, and water.

- 0.104" carbon steel.
- Sloping control panel attached with concealed hinge on bottom edge. Door opens to 90°.
- Black zinc die cast keylocking/padlocking handles on front and rear doors.
- 3 point latching mechanism.
- Seams continuously welded and ground smooth.
- Oil-resistant gasket on door
- Optional equipment mount to horizontal channels welded to sides.
- Flush mounted doors.
- Optional writing desk and top section available.
- Interior print pocket.
- Removable eyebolts in console body.
- Ground stud on door.

ANSI-61 gray powder coating inside and out.
Optional panels are powder coated white.

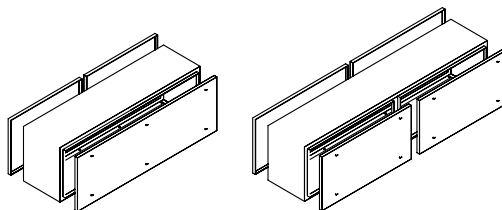
NEMA Type 12 & Type 13
UL Listed Type 12
CSA Type 12
IEC 60529 IP 55



ENCLOSURES						
Catalog No.	Description	Height (A)	Width (B)	Depth (C)	Product Code	List Price
SCE-1448BD	Console Body	50.00	48.00	23.00	C1	2,673.68
SCE-1448T	Console Top	16.00	48.00	12.50	C1	670.95
SCE-1448P2	Half Panel	22.00	41.00		P3	212.67
SCE-1448P3	Full Panel	42.25	41.00		P3	336.74
SCE-1448W	Writing Desk	48.00	10.00		P2	214.61

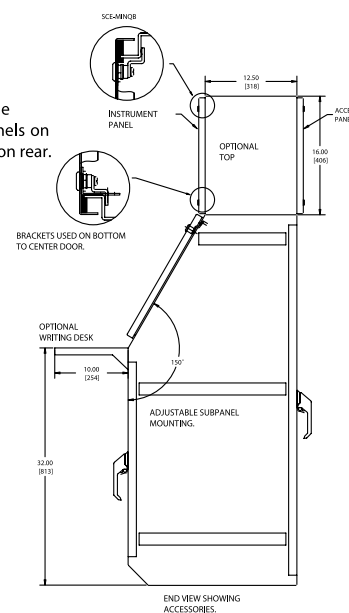
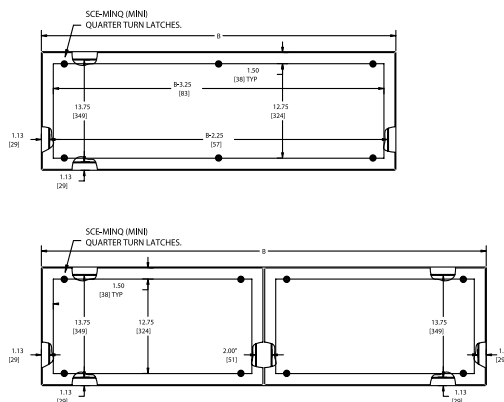
ENCLOSURES						
Catalog No.	Description	Height (A)	Width (B)	Depth (C)	Product Code	List Price
SCE-1460BD	Console Body	50.00	60.00	23.00	C1	2,767.36
SCE-1460T	Console Top	16.00	60.00	12.50	C1	777.29
SCE-1460P2	Half Panel	22.00	53.00		P3	245.59
SCE-1460P3	Full Panel	42.25	53.00		P3	402.57
SCE-1460W	Writing Desk	60.00	10.00		P2	253.19

ENCLOSURES						
Catalog No.	Description	Height (A)	Width (B)	Depth (C)	Product Code	List Price
SCE-1472BD	Console Body	50.00	72.00	23.00	C1	3,030.68
SCE-1472T	Console Top	16.00	72.00	12.50	C1	886.17
SCE-1472P3	Full Panel	42.25	65.00		P3	465.86
SCE-1472W	Writing Desk	72.00	10.00		P2	291.78



Optional top for two door 48" and 60" consoles with one access panel on front and two access panels on rear.

Optional top door for 72"wide
consoles with **two** access panels on
front and two access panels on rear.



Fax (989) 799-4524



TYPE 12 Work Station

Application -

Designed to house a computer, keyboard, monitor and other additional computer equipment in an industrial environment and provide protection from dust, oil and moisture. Stainless steel work stations resist corrosion.

Construction -

- 0.075" carbon steel.
- "SS" parts are 0.075" Type 304.
- Seams continuously welded and ground smooth.
- Oil-resistant gasket.
- Flange trough collar around all sides of door opening.
- Concealed hinge.
- Removable doors.
- Ground studs on door and body.
- Large polycarbonate viewing window in top door.
- Lifting eyes for easy handling.
- Rubber pads with provision for leveling pads on bottom of enclosure.
- Black, quarter turn latches on top door.
- Black, quarter turn wing knob latches on keyboard door.
- Black 3 point flush swing handle in lower front and back doors.
- Gland plate on lower back of enclosure.
- Pull out keyboard shelf with attached self storing mouse shelf and mouse pad.
- Mounting channels welded on sides of interior body for mounting optional panels, racks, mounting angles and shelves.

Options -

- Optional tamper-resistant inserts or padlocking handles are available.
- Can be special ordered in Type 316 Stainless Steel.

NOTE: Optional panels and accessories available on pages 43-52.

Finish -

Textured beige powder coating inside and out. Stainless Steel work stations are Type 304 stainless with #4 brushed finish.

Industry Standards -

NEMA Type 12 & Type 13
UL Listed Type 12
CSA Type 12
IEC 60529 IP 55

Industry Standards For Stainless Steel -

NEMA Type 4, 4X, 12 & 13
UL Listed Type 4, 4X & 12
CSA Type 12, 4, 4X
IEC 60529 IP 66

TYPE 12 WORK STATION - TEXTURED BEIGE

ENCLOSURES						
Catalog No.	Height (A)	Width (B)	Depth (C)	Top Size (D)	Product Code	List Price
SCE-642424WS	64.00	24.25	24.25	22.15	C2	2,316.68
SCE-642432WS	64.00	24.25	32.25	29.90	C2	2,455.94

TYPE 4X WORK STATION - STAINLESS STEEL

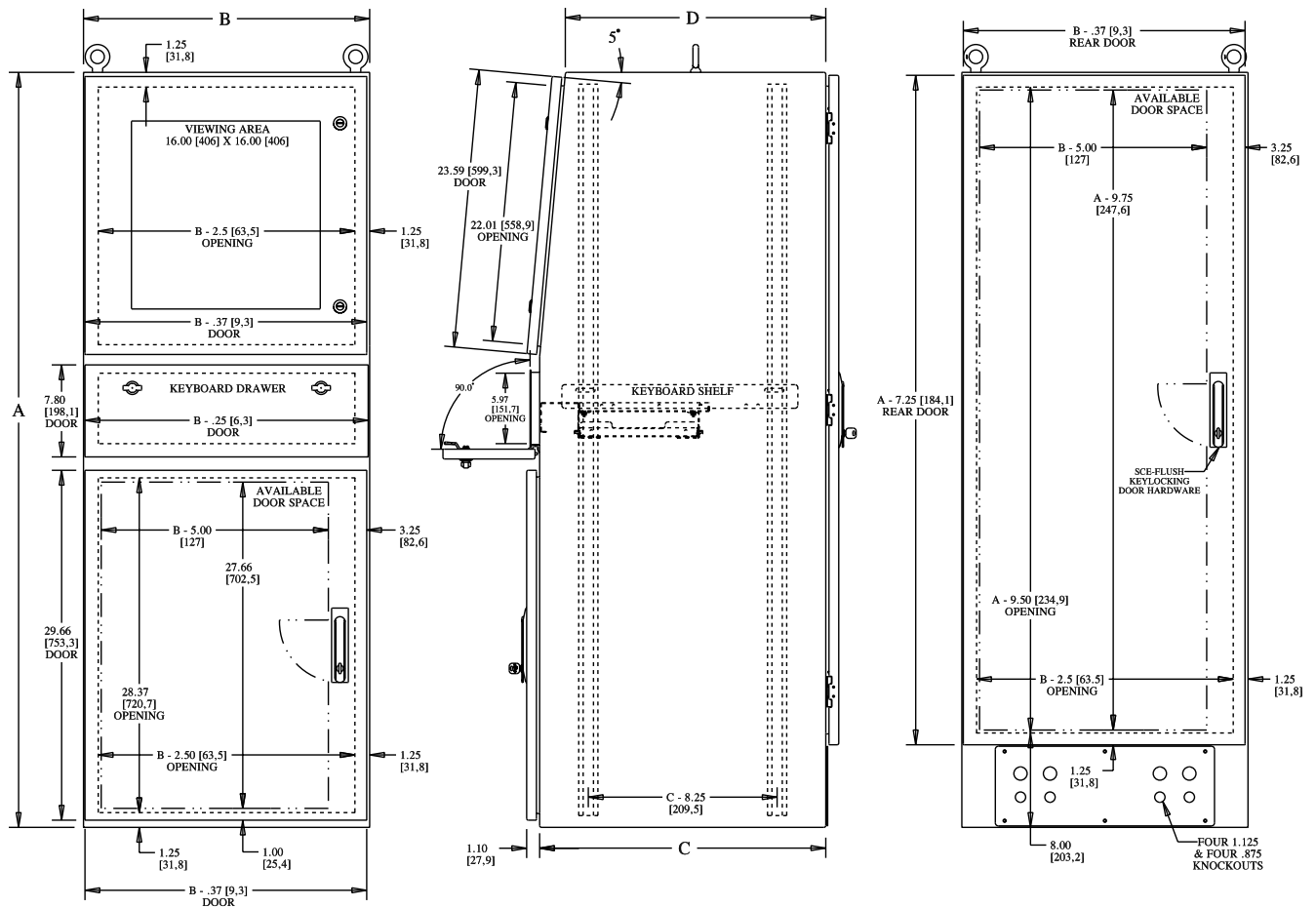
ENCLOSURES						
Catalog No.	Height (A)	Width (B)	Depth (C)	Top Size (D)	Product Code	List Price
SCE-642424SSWS	64.00	24.25	24.25	22.15	S3	6,379.61
SCE-642432SSWS	64.00	24.25	32.25	29.90	S3	6,583.22



Phone (989) 799-6871
Fax (989) 799-4524



TYPE 12 WORK STATION TECHNICAL DATA



TYPE 12

Pedestal Mount or Desktop Work Station

Application -

Designed to house a computer, keyboard, monitor and other additional computer equipment in an industrial environment and provide protection from dust, oil and moisture. Stainless steel work stations resist corrosion.

Construction -

- 0.075" carbon steel.
- "SS" parts are 0.075" Type 304.
- Seams continuously welded and ground smooth.
- Oil-resistant gasket.
- Flange trough collar around all sides of door opening.
- Concealed hinge.
- Removable doors.
- Ground studs on door and body.
- Large polycarbonate viewing window.
- Lifting eyes for easy handling.
- Black, quarter turn latches on top door.
- Black, quarter turn wing knob latches on keyboard door.
- Black 3 point flush swing handle in back door.
- Pull out keyboard shelf with attached self storing mouse shelf and mouse pad.
- Mounting channels welded on sides of interior body for mounting optional panels, racks, mounting angles and shelves.

Options -

- Optional tamper-resistant inserts or padlocking handles are available.
- Can be special ordered in Type 316 Stainless Steel.

NOTE: Optional panels and accessories available on pages 43-52.

Finish -

Textured beige powder coating inside and out. Stainless Steel work stations are Type 304 stainless with #4 brushed finish.

Industry Standards -

NEMA Type 12 & Type 13
UL Listed Type 12
CSA Type 12
IEC 60529 IP 55

Industry Standards For Stainless Steel -

NEMA Type 4, 4X, 12 & 13
UL Listed Type 4, 4X & 12
CSA Type 12, 4, 4X
IEC 60529 IP 66

TYPE 12

PEDESTAL MOUNT OR DESKTOP WORK STATION - TEXTURED BEIGE

ENCLOSURES						
Catalog No.	Height (A)	Width (B)	Depth (C)	Top Size (D)	Product Code	List Price
SCE-342424WS	34.00	24.25	24.25	22.15	C2	1,676.11

TYPE 4X

PEDESTAL MOUNT OR DESKTOP WORK STATION - STAINLESS STEEL

ENCLOSURES						
Catalog No.	Height (A)	Width (B)	Depth (C)	Top Size (D)	Product Code	List Price
SCE-342424SSWS	34.00	24.25	24.25	22.15	S3	5,768.79



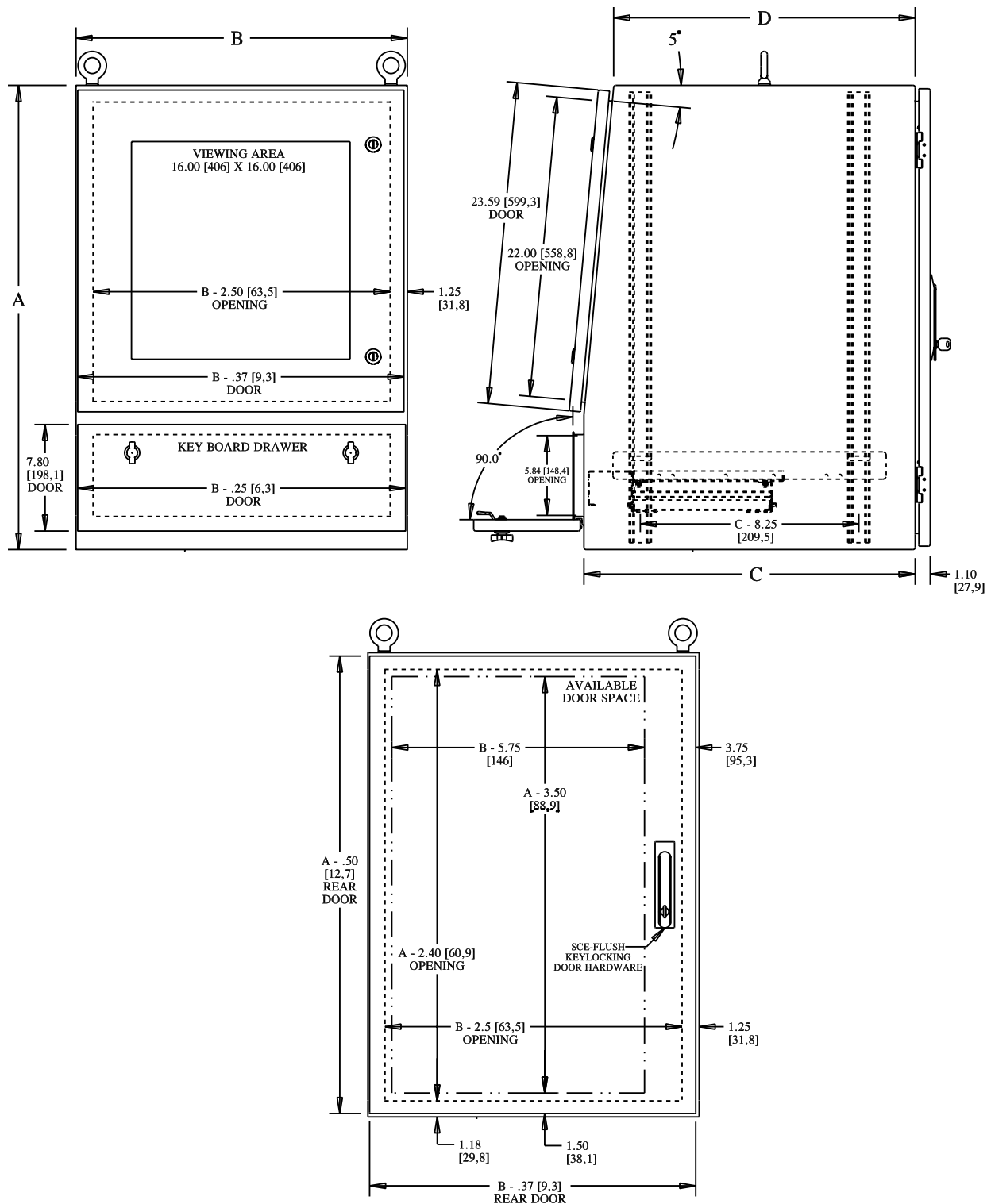
Phone (989) 799-6871

Fax (989) 799-4524



TYPE 12 PEDESTAL MOUNT OR DESKTOP WORK STATION

TECHNICAL DATA



TYPE 12

Slope Top Work Station

Application -

Designed to house a computer, keyboard, monitor and other additional computer equipment in an industrial environment or an environment which may be regularly hosed down or in very wet or oily conditions. Provides protection from dust, dirt, water and oil. Stainless Steel work stations resist corrosion. Installation instructions can be found at www.saginawcontrol.com in the Installation Manual.

Construction -

- 0.075" carbon steel.
- "SS" parts are 0.075" Type 304.
- Seams continuously welded and ground smooth.
- 15 degree sloped top.
- 12.5 degree sloped keyboard desk.
- Oil-resistant gasket.
- Flange trough collar around all sides of door opening.
- Concealed hinge.
- Removable doors.
- Ground studs on door and body.
- Large polycarbonate viewing window in top door.
- Lifting eyes for easy handling.
- Rubber pads with provision for leveling pads on bottom of enclosure.
- Black, quarter turn latches on top door.
- Black 3 point flush swing handle in lower front and back doors.
- Gland plate on lower back of enclosure.
- Mounting channels welded on sides of interior body for mounting optional panels, racks, mounting angles and shelves.
- Monitor Shelf For Slope Top WS.
- Provisions for Monitor Mounting Strap System for Slope Top WS.
- Pencil edge palm rest

Options -

- Can be special ordered in Type 316 Stainless Steel.

Finish -

Powder coated white inside and out.
Stainless steel work stations are Type 304 stainless with #4 brushed finish.

Industry Standards -

NEMA Type 4, 12 & 13
UL Listed Type 4 & 12
CSA Type 4 & 12
IEC 60529 IP 66

Industry Standards For Stainless Steel -

NEMA Type 4, 4X, 12 & 13
UL Listed Type 4, 4X & 12
CSA Type 12, 4, 4X
IEC 60529 IP 66

TYPE 12

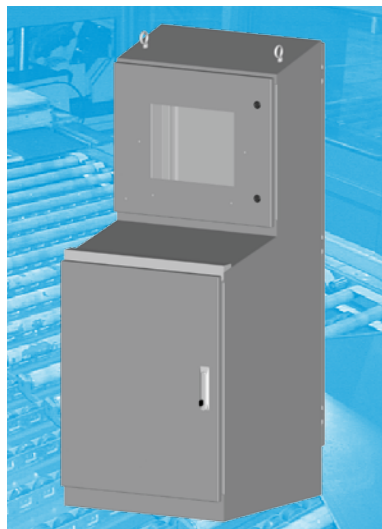
SLOPE TOP WORK STATION

ENCLOSURES					
Catalog No.	Height (A)	Width (B)	Depth (C)	Product Code	List Price
SCE-66ST2626WS	65.59	26.00	26.00	C2	2,330.53

TYPE 12

SLOPE TOP WORK STATION - STAINLESS STEEL

ENCLOSURES					
Catalog No.	Height (A)	Width (B)	Depth (C)	Product Code	List Price
SCE-66ST2626SSWS	65.59	26.00	26.00	S3	7,354.91

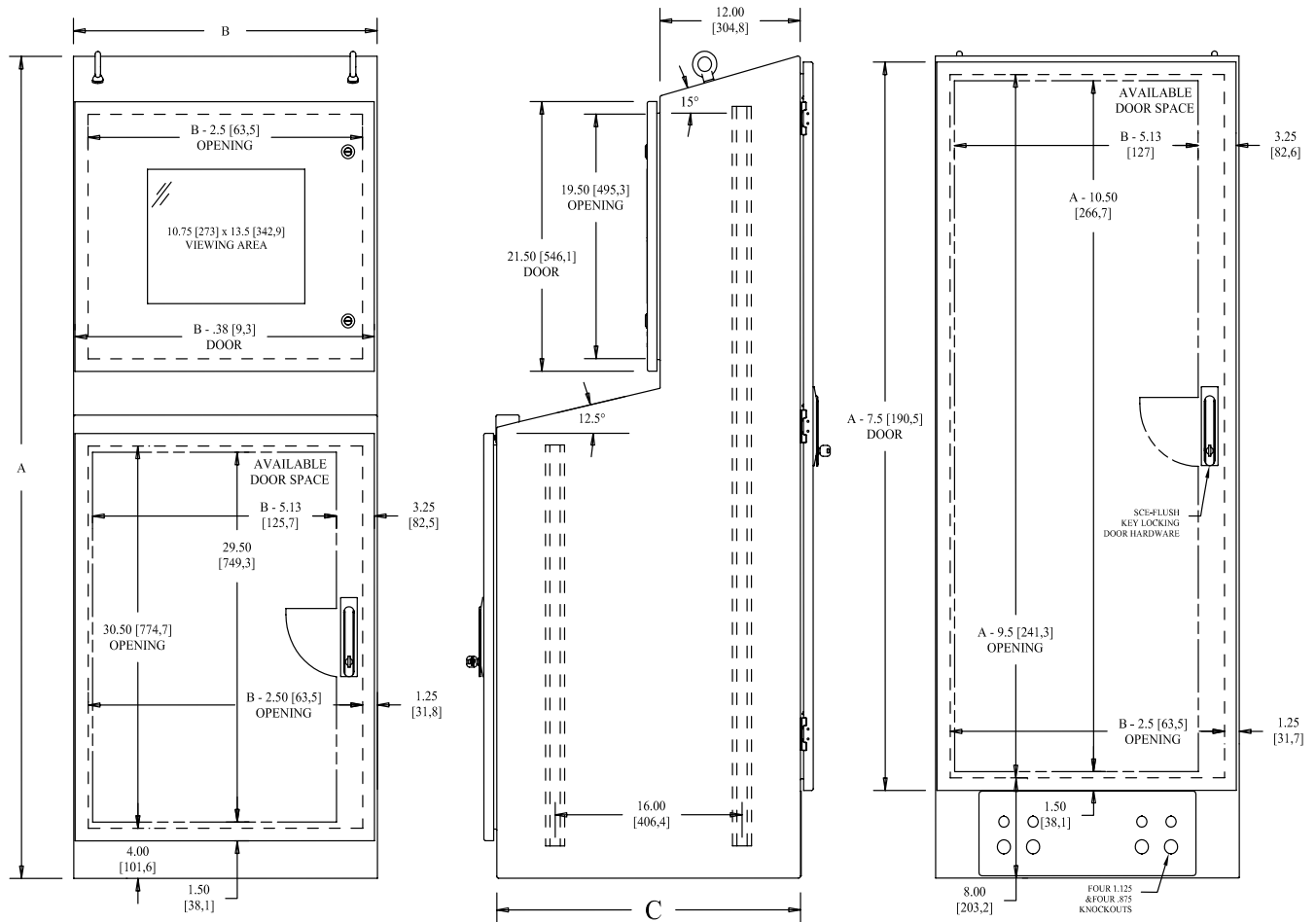


Phone (989) 799-6871
Fax (989) 799-4524



TYPE 12 SLOPE TOP WORK STATION

TECHNICAL DATA



WORK STATION ACCESSORY SELECTION GUIDE

PART NUMBER	DESCRIPTION	SCE-642424SSWS	SCE-642424WS	SCE-642432SSWS	SCE-642432WS	SCE-342424SSWS	SCE-342424WS	SCE-66ST2626WS	SCE-66ST2626SSWS	REQUIRES
SCE-20POS	Pull-Out Shelf	•	•			•	•			
SCE-22POS	Pull-Out Shelf							•	•	
SCE-26POS	Pull-Out Shelf			•	•					
SCE-22VEPOS	Vented Pull-Out Shelf							•	•	
SCE-20STS	Stationary Shelf	•	•			•	•			
SCE-22STS	Stationary Shelf							•	•	
SCE-26STS	Stationary Shelf			•	•					
SCE-20VESTS	Vented Stationary Shelf	•	•			•	•			
SCE-22VESTS	Vented Stationary Shelf							•	•	
SCE-26VESTS	Vented Stationary Shelf			•	•					
SCE-60RA19WS	Type RA Top Rack Angle	•	•	•	•	•	•			SCE-CN1032
SCE-60RA24WS	Type RA Bottom Rack Angle	•	•	•	•					SCE-CN1032
SCE-60RP19WS	Type RP Top Rack Angle	•	•	•	•	•	•			SCE-CN1032
SCE-60RP24F6	Type RP Bottom Rack Angle	•	•	•	•					SCE-CN1032
SCE-PSK24	Panel Support	•	•			•	•	•	•	
SCE-PSK32	Panel Support			•	•					
SCE-60P24F1	Full Panel	•	•	•	•			•	•	
SCE-60P24F2	Half Panel	•	•	•	•	•	•	•	•	
SCE-72P24F1	Full Panel	•	•	•	•			•	•	
SCE-72P24F2	Half Panel	•	•	•	•	•	•	•	•	
SCE-90P24F2	Half Panel	•	•	•	•			•	•	
SCE-14P1	Swing Out Panel	•	•	•	•	•	•	•	•	
SCE-72SP24F3	Full Swing Out Panel	•	•	•	•			•	•	
SCE-72SP24F4	Half Swing Out Panel	•	•	•	•	•	•	•	•	
SCE-60P24WS	Side Mount Plate	•	•			•	•	•	•	
SCE-60P32WS	Side Mount Plate			•	•					
SCE-SB18	Support Bracket	•	•	•	•	•	•			Type RA Rack Angles
SCE-PE22	Pedestal						•			
SCE-PE22SS	Pedestal - Stainless Steel					•				
SCE-24PEBASE	Pedestal Base						•			
SCE-24PEBASESS	Pedestal Base - Stainless Steel					•				
SCE-SKR26	Skirting							•		SCE-CAKS
SCE-SKR26SS	Skirting - Stainless Steel								•	SCE-CAKS
SCE-SKR27	Skirting	•	•							SCE-CAKS
SCE-SKR27SS	Skirting - Stainless Steel	•	•							SCE-CAKS
SCE-SKR35	Skirting			•	•					SCE-CAKS
SCE-SKR35SS	Skirting - Stainless Steel			•	•					SCE-CAKS
SCE-CAKS	Castors	•	•	•	•	•	•	•	•	
SCE-LPD2	Leveling Pad	•	•	•	•	•	•	•	•	
SCE-WSBTD	Blank Top Door		•		•		•			
SCE-STWBTD	Blank Top Door							•	•	
SCE-WSSBTD	Blank Top Door - Stainless Steel	•		•		•				
SCE-STWSSBTD	Blank Top Door - Stainless Steel							•	•	
SCE-WSNHTD	Non-Hinged Top Door		•		•		•			
SCE-WSSNHTD	Non-Hinged Top Door - Stainless Steel	•		•		•				
SCE-KBH	Keyboard Housing	•	•	•	•	•	•			
SCE-WSCC	Control Compartment		•		•		•			
SCE-WSCCSS	Control Compartment - Stainless Steel	•		•		•				
SCE-KBS	Keyboard Shelf	•	•	•	•	•	•			Qty. 1 Included
SCE-8STS	Monitor Shelf							•	•	
SCE-8VESTS	Vented Monitor Shelf							•	•	
SCE-STWSMMK	Monitor Mounting Strap System							•	•	
SCE-STWSPL	Pencil Edge/Palm Rest							•	•	Qty. 1 Included
SCE-STWSPLSS	Pencil Edge/Palm Rest							•	•	Qty. 1 Included

Catalog No.	Height (A)	Width (B)	Depth (C)	Used In Enclosure Depth	Product Code	List Price
SCE-20POS	2.00	22.00	20.00	24.25	C2	247.74
SCE-22POS	2.00	23.75	22.00	26.00	C2	264.26
SCE-26POS	2.00	22.00	28.00	32.25	C2	254.25



Catalog No.	Height (A)	Width (B)	Depth (C)	Used In Enclosure Depth	Product Code	List Price
SCE-22VEPOS	2.00	23.75	22.00	26.00	C2	317.95



Catalog No.	Height (A)	Width (B)	Depth (C)	Used In Enclosure Depth	Product Code	List Price
SCE-20STS	2.00	22.00	20.00	24.25	C2	70.41
SCE-22STS	2.00	23.75	22.00	26.00	C2	86.35
SCE-26STS	2.00	22.00	28.00	32.25	C2	76.92



Catalog No.	Height (A)	Width (B)	Depth (C)	Used In Enclosure Depth	Product Code	List Price
SCE-20VESTS	2.00	22.00	20.00	24.25	C2	169.51
SCE-22VESTS	2.00	23.75	22.00	26.00	C2	100.96
SCE-26VESTS	2.00	22.00	28.00	32.25	C2	182.54



Catalog No.	Height (A)	Width (B)	Depth (C)	Product Code	List Price
SCE-8STS Non-Vented	1.50	23.75	8.00	C2	53.03
SCE-8VESTS Vented	1.50	23.75	8.00	C2	60.33



WORK STATION ACCESSORIES

Pull-Out Shelf

Pull-out shelves are designed to allow easy access to the back of equipment. Extends 19" and mounts between the mounting channels provided inside the work station. Slides are included with shelf. Made of 0.075" steel and powder coated white.

Vented Pull-Out Shelf

Vented pull out shelves are designed to allow easy access to the back of equipment and to allow air circulation inside the work station. Extends 19" and mounts between the mounting channels provided inside the work station. Slides are included with the shelf. Made of 0.075" steel and powder coated white.

Stationary Shelf

Designed to support monitors, PC's, printers or any other equipment. Mounts between the mounting channels provided inside the work station. Made of 0.075" steel and powder coated white.

Vented Stationary Shelf

Designed to support monitors, PC's, printers or any other equipment while allowing air circulation inside the work station. Mounts between the mounting channels provided inside the work station. Made of 0.075" steel and powder coated white.

Monitor Shelf Non-Vented & Vented

Designed to support the monitor or other components in the upper section of the work station. Vented shelf allows air circulation inside the work station. Made of 0.075" steel and powder coated white.

WORK STATION ACCESSORIES

Monitor Mounting Strap System

Designed for direct mounting of a flat screen monitor to the work station window door. Includes strap and mounting brackets.

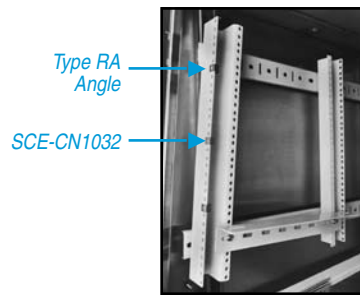


Catalog No.	Product Code	List Price
SCE-STWSMMK	C2	37.28

Rack Mounting Angle (Type RA) - "U-Shape"

Designed for mounting 19" rack mount equipment. Order clip nut package (CN1032) to provide tapped holes. Made of 0.075" steel and powder coated white.

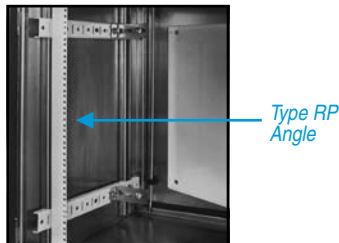
Catalog No.	Length	Mounting Location	Quantity Per Kit	Product Code	List Price
SCE-60RA19WS	19.25	Top	2	C2	119.96
SCE-60RA24WS	28.00	Bottom	2	C2	125.17



Rack Mounting Angle (Type RP) - "L-Shape"

Designed for mounting 19" rack mount equipment. Order clip nut package (CN1032) to provide tapped holes. Made of 0.075" steel and powder coated white.

Catalog No.	Length	Mounting Location	Quantity Per Kit	Product Code	List Price
SCE-60RP19WS	19.25	Top	2	C2	58.68
SCE-60RP24F6	26.25	Bottom	2	C2	62.09



Pencil Edge/Palm Rest

Designed as a palm rest or retainer for the keyboard surface of the work station. Made of 0.075" steel and powder coated white. Stainless steel made of Type 304 stainless steel with #4 brushed finish.

Catalog No.	Height (A)	Width (B)	Depth (C)	Product Code	List Price
SCE-STWSPL	0.56	26.00	2.00	C2	32.91
SCE-STWSPLSS	0.56	26.00	2.00	C2	114.00

Clamping Nuts

Clamping nuts with a #10-32 retained nut will fit all rack mounting angles and rack mounting frames, to provide tapped holes. Nuts are zinc plated.

Catalog No.	Quantity Per Kit	Product Code	List Price
SCE-CN1032	20	P2	52.15

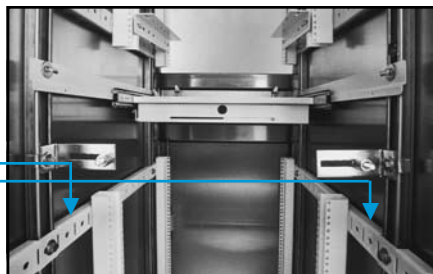


Phone (989) 799-6871
Fax (989) 799-4524



Catalog No.	Height (A)	Width (B)	Depth (C)	Depth (D)	Quantity Per Kit	Product Code	List Price
SCE-PSK24	2.00	0.50	21.00	24.25	4	C2	59.98
SCE-PSK32	2.00	0.50	29.00	32.25	4	C2	63.90

Panel Supports



Catalog No.	Height (A)	Width (B)	Product Code	List Price
SCE-60P24F1	48.00	20.00	P3	173.85
SCE-60P24F2	24.88	20.00	P3	116.72
SCE-72P24F1	60.00	20.00	P3	196.20
SCE-72P24F2	30.88	20.00	P3	126.66
SCE-90P24F2	39.88	20.00	P3	141.56



Catalog No.	Height (A)	Width (B)	Product Code	List Price
SCE-14P1	22.00	18.12	P3	168.79
SCE-72SP24F4	30.88	18.81	P3	279.03



Catalog No.	Height (A)	Width (B)	For Enclosure Depth	Product Code	List Price
SCE-60P24WS	12.00	17.00	24.25	C2	61.28
SCE-60P32WS	12.00	25.50	32.25	C2	70.41



WORK STATION ACCESSORIES

Panel Support

Panel supports can be installed horizontally to the left and right side of enclosure. Allows easy installation of optional panels or (RA) and (RP) type rack mounting angles to make them adjustable from front to back of the enclosure. Made of 0.125" steel with a white powder coat finish.

Panels

Panels can be positioned anywhere along the vertical mounting channels. All panels are made of heavy gauge steel and powder coated white.

Swing-Out Panel

Designed to allow the panel to swing completely out of the enclosure to provide easy access to mounted equipment. A Panel Support is required for installation (SCE-PSK24 or SCE-PSK32). Made from 0.104" steel with 0.125" steel support frames and heavy gauge continuous hinge. Powder coated white.

Side Mount Plate

Designed to provide extra mounting space on the sides of the enclosure. Can be securely attached to the mounting channels. Mounting hardware is included. Made from 0.125" steel and powder coated white.

WORK STATION ACCESSORIES

Individual Panel Supports

Individual Panel Supports are available for mounting sub-panels. Packaged in sets with all mounting hardware included. Made of heavy gauge steel and plated.

Support Bracket

Equipment support brackets help support rack mounted equipment during installation. The support mounts between two pair of type (RA) rack mounting angles. Slotted holes are provided to allow adjustment. Made from 0.075" carbon steel and powder coated white.

Channel Nuts

Designed to allow mounting of additional equipment to side channels. Zinc plated.

Pedestal

Designed to allow desktop work stations to be floor mounted. Gasket and hardware provided to attach to work station. Made from 0.075" carbon steel and powder coated textured beige. "SS" pedestal is made from Type 304 stainless steel.

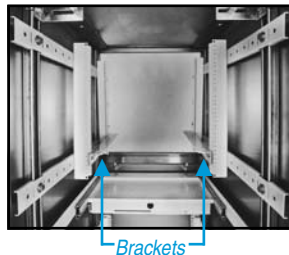
Pedestal Base

Designed to mount pedestal to the floor. Made from 0.075" carbon steel and powder coated textured beige. "SS" base is made from Type 304 stainless steel.

Catalog No.	Notes	Product Code	List Price
SCE-FSPS4	Set of 4	P2	55.88
SCE-FSPS6	Set of 6	P2	84.44
SCE-FSPS8	Set of 8	P2	126.66



Catalog No.	Height (A)	Width (B)	Depth (C)	Quantity Per Kit	Product Code	List Price
SCE-SB18	2.00	2.00	15.00	2	C2	44.34



Catalog No.	Description	Quantity Per Kit	Product Code	List Price
SCE-PS1420CN	1/4 - 20 Strut Nut	20	P2	42.22
SCE-PS3816CN	3/8 - 16 Strut Nut	20	P2	42.22

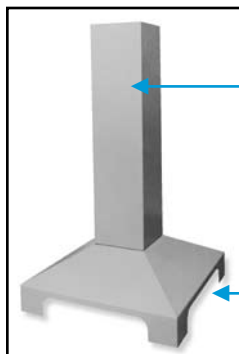


SCE-PS1420CN



SCE-PS3816CN

Catalog No.	Height (A)	Width (B)	Depth (C)	Finish	Product Code	List Price
SCE-PE22	21.38	8.00	8.00	Textured Beige	C2	365.08
SCE-PE22SS	21.38	8.00	8.00	Stainless Steel	C2	912.72



Catalog No.	Height (A)	Width (B)	Depth (C)	Finish	Product Code	List Price
SCE-24PEBASE	10.00	24.00	24.00	Textured Beige	C2	545.02
SCE-24PEBASESS	10.00	24.00	24.00	Stainless Steel	C2	1,363.86

Phone (989) 799-6871

Fax (989) 799-4524



Catalog No.	Height (A)	Width (B)	Depth (C)	Enclosure Depth	Product Code	List Price
SCE-SKR26	3.00	29.00	29.00	26.00	C2	202.85
SCE-SKR26SS	3.00	29.00	29.00	26.00	C2	660.40
SCE-SKR27	3.00	27.25	27.25	24.25	C2	179.93
SCE-SKR27SS	3.00	27.25	27.25	24.25	C2	359.87
SCE-SKR35	3.00	27.25	35.25	32.25	C2	206.01
SCE-SKR35SS	3.00	27.25	35.25	32.25	C2	412.03



Catalog No.	Description	Size of Wheel	Product Code	List Price
SCE-CAKS	Set of 4 Swivel Casters	3"	P2	136.60



Catalog No.	Thread Size	Height	Quantity Per Kit	Product Code	List Price
SCE-LPD2	3/8 - 16	2.00	4	C2	37.25



Catalog No.	Height (A)	Width (B)	Finish	Product Code	List Price
SCE-STWBTD	21.50	25.63	White	C2	155.47
SCE-STWSSBTD	21.50	25.63	Stainless Steel	C2	462.20
SCE-WSBTD	23.59	24.00	Textured Beige	C2	247.74
SCE-WSSBTD	23.59	24.00	Stainless Steel	C2	365.08

Blank Top Door



Catalog No.	Height (A)	Width (B)	Finish	Product Code	List Price
SCE-WSNHTD	23.59	24.00	Textured Beige	C2	247.74
SCE-WSSNHTD	23.59	24.00	Stainless Steel	C2	365.08

Non-Hinged Top Door



WORK STATION ACCESSORIES

Skirting

Designed to conceal the casters on a work-station. Intended to use with (SCE-CAKS) 3" swivel caster kit. Not intended for use as a base only. Made of 0.075" carbon steel and powder coated textured beige powder. "SS" parts are made of Type 304 stainless steel with #4 brushed finish.

Casters

Set of 4 swivel casters. Casters have ball bearing pivots and brakes. Load rating 250 lbs for each caster. For specifications, consult the Installation Manual at www.saginawcontrol.com

Leveling Pads

Designed to attach to the bottom of the enclosure in the existing threaded holes. Allows for adjustments for uneven floors. Pads are zinc plated with a plastic base.

Blank Top Door

Designed to replace the top door when cutouts are desired. Oil resistant gasket. Installed by removing hinge pin. Black quarter turn latches. Made of 0.075" carbon steel and powder coated textured beige. "SS" door is made of Type 304 stainless steel with #4 brushed finish.

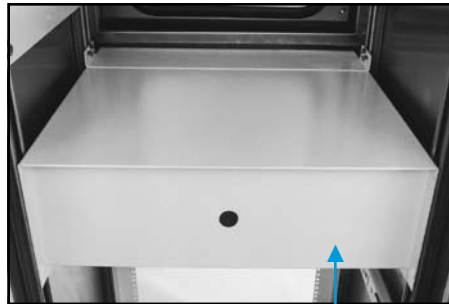
Non-Hinged Top Door

Designed to replace the top door when hinged door is not desired. Oil resistant gasket. Installed by removing concealed hinge. Hanger clips on top with black quarter turn latches on bottom. Made of 0.075" carbon steel and powder coated textured beige. "SS" door is made of Type 304 stainless steel with #4 brushed finish.

WORK STATION ACCESSORIES

Keyboard Housing

Provides protection from dust, dirt, oil and water for interior components when keyboard drawer is open. Mounts to mounting channels. Keyboard shelf with slides is mounted inside the housing. Oil resistant gasket. Hole grommet in rear provided for cords. Powder coated white.



View from Rear

Control Compartment

Designed to be mounted to the front of the work station when installation of push-buttons or control panels is desired. Installed after removing the pull-out keyboard drawer and door. Can be installed with the flat or sloped surface facing up. 20° slope on sloped surface. Gasket and mounting hardware included. Made of 0.075" carbon steel and powder coated textured beige. "SS" part is made of Type 304 stainless steel with #4 brushed finish.

Catalog No.	Height (A)	Width (B)	Depth (C)	Finish	Product Code	List Price
SCE-WSCC	8.00	24.25	14.50	Textured Beige	C2	286.86
SCE-WSCCSS	8.00	24.25	14.50	Stainless Steel	C2	664.98



Pull-Out Keyboard Drawer

Designed to hold a keyboard and mouse on a separate pull-out shelf. Mounts between mounting channels. Made of heavy gauge steel with a textured beige powder coat finish. A mouse pad is included. Drawer is included with work station.

Catalog No.	Height (A)	Width (B)	Depth (C)	Code	Product Price	List
SCE-KBS	3.00	20.00	14.00	24.25	C2	372.54
SCE-KBS32	3.00	20.00	14.00	32.25	C2	372.54



WORK STATION ACCESSORIES

Door Latch Inserts

Designed to replace black quarter turn latches when additional security is required.

Padlocking Housing Latch

Catalog No.	Qty. Per Kit	Finish	Product Code	List Price
SCE-PLHG	1	Black	P2	17.38



Slotted 2 x 4 Door Latch

Catalog No.	Qty. Per Kit	Finish	Product Code	List Price
SCE-DLSB	1	Chrome	P2	17.38
SCE-DLSBB	1	Black	P2	17.38
SCE-DLSSB	1	Stainless	P2	42.22



Wing Knob Door Latch

Catalog No.	Qty. Per Kit	Finish	Product Code	List Price
SCE-DLWKC	1	Chrome	P2	17.38
SCE-DLWKF	1	Black	P2	17.38



Square Latch with Skeleton Key

Catalog No.	Qty. Per Kit	Finish	Product Code	List Price
SCE-DL7SC	1	Chrome	P2	17.38



Keylocking Wing Knob Latch

Catalog No.	Qty. Per Kit	Finish	Product Code	List Price
SCE-KLWN	1	Chrome	P2	34.77
SCE-KLWNB	1	Black	P2	34.77



Triangular Latch with Skeleton Key

Catalog No.	Qty. Per Kit	Finish	Product Code	List Price
SCE-DL7TE	1	Chrome	P2	17.38



Padlocking Wing Knob Latch

Catalog No.	Qty. Per Kit	Finish	Product Code	List Price
SCE-PLWKB	1	Black	P2	19.87



Non-Locking "T" Handle

Catalog No.	Qty. Per Kit	Finish	Product Code	List Price
SCE-NLTH	1	Chrome	P2	24.84



Keylock Door Latch

Catalog No.	Qty. Per Kit	Finish	Product Code	List Price
SCE-DLKLD	1	Chrome	P2	27.32
SCE-DLKLDB	1	Black	P2	27.99



Coinproof Door Latch

Catalog No.	Qty. Per Kit	Finish	Product Code	List Price
SCE-DLCA	1	Chrome	P2	14.90



Door Handles

Designed to replace the flush swing handle when alternative locking mechanism is desired. Zinc die cast steel with black textured finish.

Keylocking Flush Swing Handle

Catalog No.	Qty. Per Kit	Product Code	List Price
SCE-FSH2	1	P2	63.34



Keylocking Flush Swing Handle with Padlock Provision

Catalog No.	Qty. Per Kit	Product Code	List Price
SCE-FSH6	1	P2	81.96



Flush Swing Handle with 8mm Square Lock

Catalog No.	Qty. Per Kit	Product Code	List Price
SCE-FSH4	1	P2	63.34



Padlocking Flush Swing Handle

Catalog No.	Qty. Per Kit	Product Code	List Price
SCE-FSH8	1	P2	72.03



PROGRAM PORTS

Application -

This product line is designed to help increase your compliance with NFPA 70E and reduce the risk of personal exposure of arc flash by reducing the need to access the enclosure, by bringing GFCI utility outlets and data interface ports outside the enclosures.

Construction -

- Transparent sealed cover.
- Quick release padlocking latch.
- 120VAC Simplex Outside.
- Available with Ethernet, Control Net, Serial or Device Net data interface ports

Options -

- Contact the factory for availability of any other data interface ports or type 4X designs.

Finish -

Powder coated Light Gray.

Industry Standards -

- UL Recognized Type 1, 12 & 4
- CSA Approved Type 1, 12 & 4
- CE & NFPA 70E Compliant

Catalog No.	Qty. Per Kit	Interface	Type	Product Code
P-R2-F3R3-U450	1	(Ethernet)	4	P4



RJ-45 CAT5 F/F connector with 120 VAC Simplex outlet & 3 Amp circuit breaker

Catalog No.	Qty. Per Kit	Interface	Type	Product Code
P-B15-F3R3-U450	1	(Control Net)	4	P4



RJ-45 CAT5 F/F connector with 120 VAC Simplex outlet & 3 Amp circuit breaker

Catalog No.	Qty. Per Kit	Interface	Type	Product Code
P-Q7-F3R3-U450	1	(Serial)	4	P4



DB9 F/M connector with 120 VAC Simplex outlet & 3 Amp circuit breaker

Catalog No.	Qty. Per Kit	Interface	Type	Product Code
P-Q9-F3R3-U450	1	(Serial)	4	P4



DB9 M/F connector with 120 VAC Simplex outlet & 3 Amp circuit breaker

Catalog No.	Qty. Per Kit	Interface	Type	Product Code
P-D4-H3R3-U450	1	(Device Net)	4	P4



Network Tap PC Board with 120 VAC Simplex outlet & 3 Amp circuit breaker

Catalog No.	Qty. Per Kit	Interface	Type	Product Code
P-B15-K3RF3-U450	1	(Control Net)	4	P4
P-B15-K4RF3-U450	1	(Control Net)	12	P4

RJ-45 CAT5 F/F connector with 120 VAC
Duplex GFCI with internal Simplex GFCI & 3 Amp circuit breaker



Catalog No.	Qty. Per Kit	Interface	Type	Product Code
P-Q7-K3RF3-U450	1	(Serial)	4	P4
P-Q7-K4RF3-U450	1	(Serial)	12	P4

DB9 F/M connector with 120 VAC
Duplex GFCI with internal Simplex GFCI & 3 Amp circuit breaker



Catalog No.	Qty. Per Kit	Interface	Type	Product Code
P-Q9-K3RF3-U450	1	(Serial)	4	P4
P-Q9-K4RF3-U450	1	(Serial)	12	P4

DB9 M/F connector with 120 VAC
Duplex GFCI with internal Simplex GFCI & 3 Amp circuit breaker



Catalog No.	Qty. Per Kit	Interface	Type	Product Code
P-R2-K3RF3-U450	1	(Ethernet)	4	P4
P-R2-K4RF3-U450	1	(Ethernet)	12	P4

RJ-45 CAT5 F/F connector with 120 VAC
Duplex GFCI with internal Simplex GFCI & 3 Amp circuit breaker



Catalog No.	Qty. Per Kit	Interface	Type	Product Code
P-D4-M3RF3-U450	1	(Device Net)	4	P4
P-D4-M4RF3-U450	1	(Device Net)	12	P4

Network Tap PC Board with 120 VAC
Duplex GFCI with internal Simplex GFCI & 3 Amp circuit breaker



Phone (989) 799-6871
Fax (989) 799-4524

PROGRAM PORTS

Application -

This product line is designed to help increase your compliance with NFPA 70E and reduce the risk of personal exposure of arc flash by reducing the need to access the enclosure, by bringing GFCI utility outlets and data interface ports outside the enclosures.

Construction -

- Transparent sealed cover.
- Quick release padlocking latch.
- GFCI Ground fault circuit interrupters with exclusive three outlet design, GFCI Duplex outside the enclosure with GFCI Simplex inside.
- Available with Ethernet, Control Net, Serial or Device Net data interface ports

Options -

- Contact the factory for availability of any other data interface ports or type 4X designs.

Finish -

Powder coated Light Gray.

Industry Standards -

- UL Recognized Type 1, 12 & 4
- CSA Approved Type 1, 12 & 4
- CE & NFPA 70E Compliant