

# Type 12 Disconnect Enclosures

## Type 12 Disconnect Enclosures

Saginaw Control & Engineering's Type 12 Disconnect Enclosures are designed to house most standard types of disconnects and circuit breakers as well as electrical and electronic controls, instruments and components.

Primarily for use in an indoor environment to protect against dust, falling dirt, dropping of non-corrosive liquid, and light splashing of water.

### Product Attributes

- ANSI-61 gray powder coated finish.
- Provides provisions for flange mounted disconnect and circuit breakers.
- Many parts are available in 304 stainless steel for non-corrosive protection.
- Exclusive SCE concealed hinges on Modular Enclosures.
- Memory retaining oil resistant urethane gasket.
- Can be custom ordered in Type 304 or 316 stainless steel.

### Product Overview

- Single-Door Enclosures for Flange-Mounted Disconnects with SCE Door Hardware
- Two-Door Enclosures for Flange Mounted Disconnects.
- Heavy Duty Free Standing Enclosures for Flange Mounted Disconnect; Stainless & Steel
- Modular Enclosures; Single and Two-Door Disconnect and Single and Two-Door Slave.
- Modular Enclosure Accessories

Phone (989) 799-6871

Fax (989) 799-4524



# Type 12 Disconnect Enclosures



## TYPE 12

Enviroline® Series

### Single-Door Enclosures For Flange-Mounted Disconnects

#### Application -

Designed to house most standard type disconnects. See Disconnect Selection Guide to verify compatibility of a specific disconnect or circuit breaker, and for wire bend space. For installation information, consult our Installation Manual at [www.saginawcontrol.com](http://www.saginawcontrol.com). For outdoor application a drip shield is recommended.

#### Construction -

- 0.075" carbon steel.
- Seams continuously welded and ground smooth.
- Flange trough collar around all sides of door opening.
- Oil-resistant gasket.
- Collar studs provided for mounting optional panels.
- Disconnect cutout provided on flange.
- Concealed hinge.
- Doors are interchangeable and easily removed by pulling hinge pins.
- 3-point latching mechanism.
- Latches are opened or closed with a screwdriver (optional tamper-resistant inserts are available)
- Mounting holes on back of enclosure.
- Mounting hardware, sealing washer and hole plug included.
- Ground studs on door and body.
- Black zinc die cast coinproof/padlocking handle.

**Disconnect switch (or circuit breaker) and operating mechanism are not furnished with this enclosure.**

#### Finish -

ANSI-61 gray powder coating inside and out. Optional panels are powder coated white.

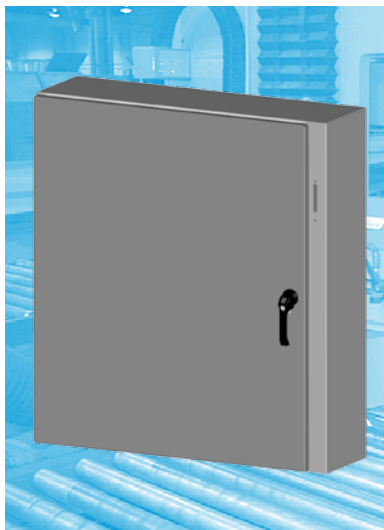
#### Industry Standards -

NEMA Type 12 & Type 13  
UL Listed Type 12  
CSA Type 12  
IEC 60529 IP55

## TYPE 12 ENVIROLINE® SERIES SINGLE-DOOR ENCLOSURES FOR FLANGE-MOUNTED DISCONNECTS

ENCLOSURES						SUB-PANEL				
Catalog No.	Height (A)	Width (B)	Depth (C)	Product Code	List Price	Catalog No.	Panel Height (D)	Panel Width (E)	Product Code	List Price
SCE-20XEL2108LP	20.00	21.38	8.00	E3	349.36	SCE-20P20	17.00	17.00	P3	35.44
⚡ SCE-20XEL2110LP	20.00	21.38	10.00	E3	367.82	SCE-20P20	17.00	17.00	P3	35.44
SCE-24XEL2108LP	24.00	21.38	8.00	E3	376.43	SCE-24P20	21.00	17.00	P3	45.57
SCE-24XEL2508LP	24.00	25.38	8.00	E3	405.95	SCE-24P24	21.00	21.00	P3	53.18
SCE-24XEL2510LP	24.00	25.38	10.00	E3	425.65	SCE-24P24	21.00	21.00	P3	53.18
SCE-30XEL2508LP	30.00	25.38	8.00	E3	450.25	SCE-30P24	27.00	21.00	P3	63.29
SCE-30XEL2510LP	30.00	25.38	10.00	E3	473.62	SCE-30P24	27.00	21.00	P3	63.29
SCE-36XEL2508LP	36.00	25.38	8.00	E3	496.98	SCE-36P24	33.00	21.00	P3	75.96
SCE-36XEL2510LP	36.00	25.38	10.00	E3	521.58	SCE-36P24	33.00	21.00	P3	75.96
SCE-36XEL3108LP	36.00	31.38	8.00	E3	554.81	SCE-36P30	33.00	27.00	P3	101.27
SCE-36XEL3110LP	36.00	31.38	10.00	E3	586.79	SCE-36P30	33.00	27.00	P3	101.27
SCE-36XEL3112LP	36.00	31.38	12.00	E3	618.78	SCE-36P30	33.00	27.00	P3	101.27
SCE-36XEL3116LP	36.00	31.38	16.00	E3	675.37	SCE-36P30	33.00	27.00	P3	101.27
SCE-42XEL3110LP	42.00	31.38	10.00	E3	642.15	SCE-42P30	39.00	27.00	P3	116.47
SCE-42XEL3112LP	42.00	31.38	12.00	E3	676.59	SCE-42P30	39.00	27.00	P3	116.47
⚡ SCE-42XEL3116LP	42.00	31.38	16.00	E3	735.64	SCE-42P30	39.00	27.00	P3	116.47
SCE-42XEL3712LP12	42.00	37.38	12.00	E3	679.97	SCE-42P36	39.00	33.00	P3	136.72
SCE-48XEL3712LP12	48.00	37.38	12.00	E3	800.53	SCE-48P36	45.00	33.00	P3	154.46
SCE-48XEL3716LP12	48.00	37.38	16.00	E3	869.41	SCE-48P36	45.00	33.00	P3	154.46
SCE-60XEL3712LP12	60.00	37.38	12.00	E3	933.38	SCE-60P36	57.00	33.00	P3	189.89
SCE-60XEL3716LP12	60.00	37.38	16.00	E3	1,020.74	SCE-60P36	57.00	33.00	P3	189.89

⚡ Available within 10 working days if not in stock

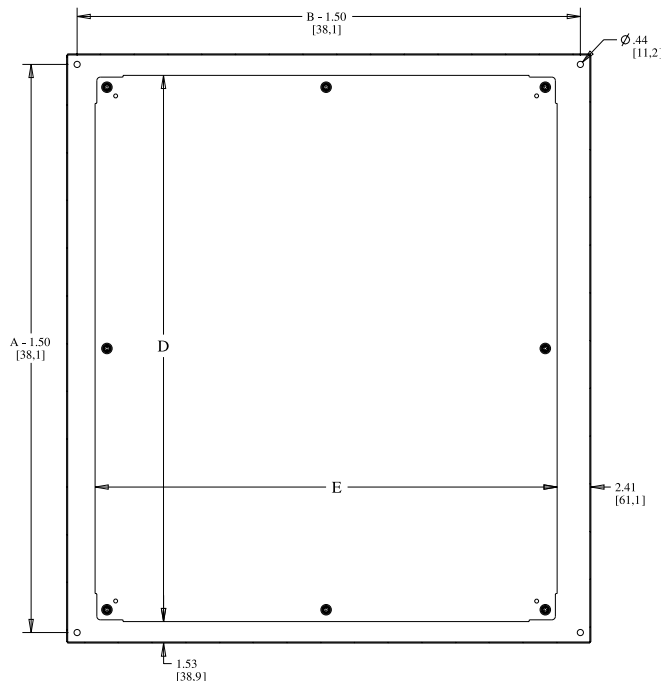
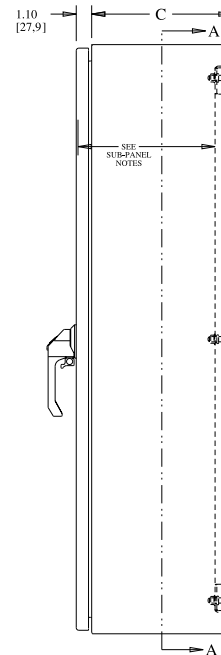
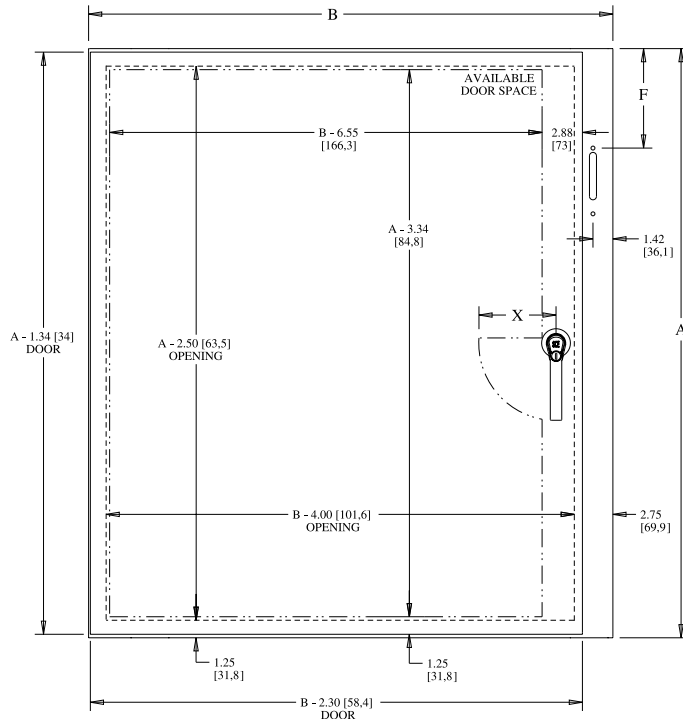


Phone (989) 799-6871

Fax (989) 799-4524



# TYPE 12 ENVIROLINE® SERIES SINGLE-DOOR ENCLOSURES FOR FLANGE-MOUNTED DISCONNECTS TECHNICAL DATA



SECTION A-A

**SUB-PANEL NOTES:**

Dimensions are from the inside of the door.

C + .32 [8.1] for flat sub-panels

C - .18 [4.5] for bent sub-panels

**DISCONNECT NOTES:**

F = 4.75 [121] when C = 8.00 [203]

F = 7.09 [180] when C = 10.00 [254]

F = 11.62 [295] when C = 12.00 [304]

F = 11.62 [295] when C = 16.00 [406]

F = 18.38 [467] for SCE-60XEL3712LP4

**HANDLE NOTES:**

On enclosures ≤ 42.00 [1067]

X = 5.50 [140] and use 5.00 [127]

padlocking handle with coin-proof.

On enclosures > 42.00 [1067]

X = 6.75 [171] and use 7.00 [178]

padlocking handle with coin-proof.

Enclosures with a height dimension < 40.00 [1016] have a 2-point door closing mechanism.

Enclosures with a height dimension of ≥ 40.00 [1016] have a 3-point door latching mechanism.

**CONSTRUCTION NOTES:**

Door will be 0.125 [3.1] thick material when enclosure height is ≥ 42.00 and door width is > 24.00

## TYPE 12

### Single-Door Enclosures For Flange-Mounted Disconnects with SCE Door Hardware

#### Application -

Designed to house most standard type disconnects. See Disconnect Selection Guide to verify compatibility of a specific disconnect or circuit breaker, and for wire bend space. For disconnect installation information, consult our Installation Manual at [www.saginawcontrol.com](http://www.saginawcontrol.com).

#### Construction -

- 0.075" carbon steel.
- Seams continuously welded and ground smooth.
- Flange trough collar around all sides of door opening.
- Concealed hinge.
- Removable print pocket furnished if height and width of enclosure is 24" or more.
- Oil-resistant gasket.
- Collar studs provided for mounting optional panels.
- Cutouts provided in flange for mounting disconnect operating handle.
- Ground stud on door.
- Black zinc die cast coinproof/padlocking handle.

**Disconnect switch (or circuit breaker) and operating mechanism are not furnished with this enclosure.**

#### Door Hardware -

Black zinc die cast coinproof/padlocking handle with 2 or 3 point latching hardware.

#### Finish -

ANSI-61 gray powder coating inside and out. Optional panels are powder coated white.

#### Industry Standards -

NEMA Type 12 & Type 13  
UL Listed Type 12  
CSA Type 12  
IEC 60529 IP 55

## TYPE 12 SINGLE-DOOR ENCLOSURES FOR FLANGE-MOUNTED DISCONNECTS WITH SCE DOOR HARDWARE

ENCLOSURES						SUB-PANEL				
Catalog No.	Height (A)	Width (B)	Depth (C)	Product Code	List Price	Catalog No.	Panel Height (D)	Panel Width (E)	Product Code	List Price
SCE-20SA2208LPPL	20.00	21.38	8.00	A5	465.86	SCE-20P20	17.00	17.00	P3	35.44
SCE-20SA2210LPPL	20.00	21.38	10.00	A5	483.60	SCE-20P20	17.00	17.00	P3	35.44
SCE-24SA2208LPPL	24.00	21.38	8.00	A5	491.19	SCE-24P20	21.00	17.00	P3	45.57
SCE-24SA2210LPPL	24.00	21.38	10.00	A5	511.43	SCE-24P20	21.00	17.00	P3	45.57
SCE-24SA2608LPPL	24.00	25.38	8.00	A5	521.57	SCE-24P24	21.00	21.00	P3	53.18
SCE-24SA2610LPPL	24.00	25.38	10.00	A5	541.83	SCE-24P24	21.00	21.00	P3	53.18
SCE-30SA2208LPPL	30.00	21.38	8.00	A5	529.16	SCE-30P20	27.00	17.00	P3	55.70
SCE-30SA2210LPPL	30.00	21.38	10.00	A5	554.48	SCE-30P20	27.00	17.00	P3	55.70
SCE-30SA2608LPPL	30.00	25.38	8.00	A5	564.62	SCE-30P24	27.00	21.00	P3	63.29
SCE-30SA2610LPPL	30.00	25.38	10.00	A5	589.92	SCE-30P24	27.00	21.00	P3	63.29
SCE-30SA2612LPPL	30.00	25.38	12.00	A5	615.25	SCE-30P24	27.00	21.00	P3	63.29
SCE-36SA2608LPPL	36.00	25.38	8.00	A5	594.99	SCE-36P24	33.00	21.00	P3	75.96
SCE-36SA2610LPPL	36.00	25.38	10.00	A5	638.03	SCE-36P24	33.00	21.00	P3	75.96
SCE-36SA3208LPPL	36.00	31.38	8.00	A5	670.95	SCE-36P30	33.00	27.00	P3	101.27
SCE-36SA3210LPPL	36.00	31.38	10.00	A5	703.87	SCE-36P30	33.00	27.00	P3	101.27
SCE-36SA3212LPPL	36.00	31.38	12.00	A5	734.24	SCE-36P30	33.00	27.00	P3	101.27
SCE-36SA3216LPPL	36.00	31.38	16.00	A5	792.49	SCE-36P30	33.00	27.00	P3	101.27
SCE-42SA3208LPPL	42.00	31.38	8.00	A5	726.65	SCE-42P30	39.00	27.00	P3	116.47
SCE-42SA3210LPPL	42.00	31.38	10.00	A5	759.57	SCE-42P30	39.00	27.00	P3	116.47
SCE-42SA3212LPPL	42.00	31.38	12.00	A5	792.49	SCE-42P30	39.00	27.00	P3	116.47
SCE-42SA3216LPPL	42.00	31.38	16.00	A5	849.45	SCE-42P30	39.00	27.00	P3	116.47
SCE-42SA3808LPPL	42.00	37.38	8.00	A5	795.01	SCE-42P36	39.00	33.00	P3	136.72
SCE-42SA3810LPPL	42.00	37.38	10.00	A5	830.47	SCE-42P36	39.00	33.00	P3	136.72
SCE-42SA3812LPPL	42.00	37.38	12.00	A5	868.44	SCE-42P36	39.00	33.00	P3	136.72
SCE-42SA3816LPPL	42.00	37.38	16.00	A5	917.82	SCE-42P36	39.00	33.00	P3	136.72
SCE-48SA2610LPPL	48.00	25.38	10.00	A5	868.44	SCE-48P24	45.00	21.00	P3	98.74
SCE-48SA3808LPPL	48.00	37.38	8.00	A5	858.30	SCE-48P36	45.00	33.00	P3	154.46
SCE-48SA3810LPPL	48.00	37.38	10.00	A5	896.29	SCE-48P36	45.00	33.00	P3	154.46
SCE-48SA3812LPPL	48.00	37.38	12.00	A5	936.81	SCE-48P36	45.00	33.00	P3	154.46
SCE-48SA3816LPPL	48.00	37.38	16.00	A5	1,015.30	SCE-48P36	45.00	33.00	P3	154.46
SCE-60SA3808LPPL	60.00	37.38	8.00	A5	979.84	SCE-60P36	57.00	33.00	P3	189.89
SCE-60SA3810LPPL	60.00	37.38	10.00	A5	1,025.41	SCE-60P36	57.00	33.00	P3	189.89
SCE-60SA3812LPPL	60.00	37.38	12.00	A5	1,071.00	SCE-60P36	57.00	33.00	P3	189.89
SCE-60SA3812A24LPPL*	60.00	37.38	12.00	A5	1,071.00	SCE-60P36	57.00	33.00	P3	189.89
SCE-60SA3816LPPL	60.00	37.38	16.00	A5	1,159.60	SCE-60P36	57.00	33.00	P3	189.89



For a more cost effective alternative see Page 91.

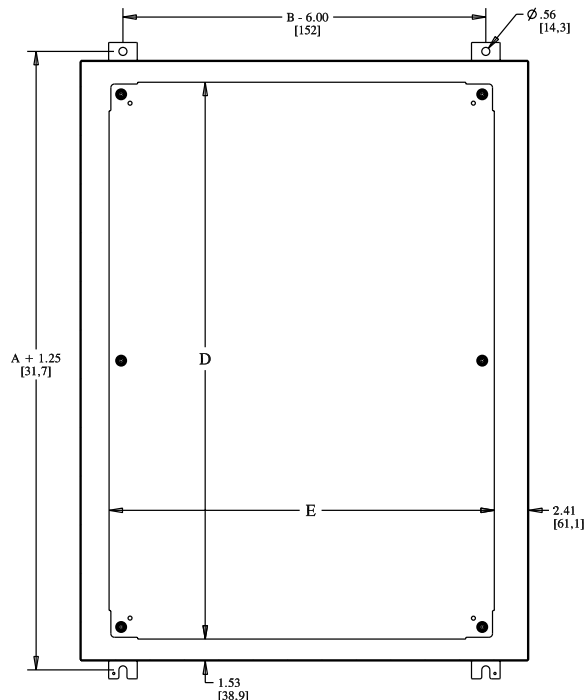
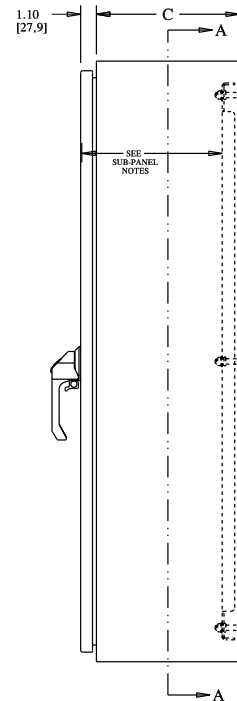
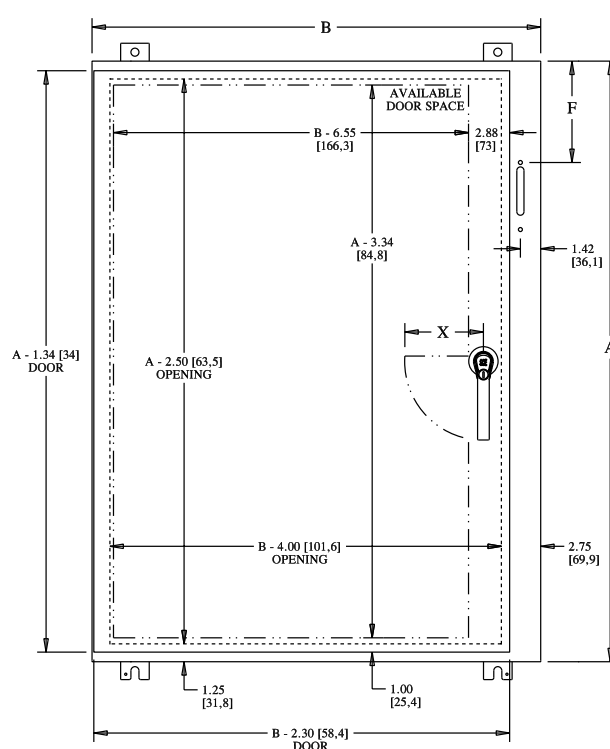
\*Provision for 400 amp Allen-Bradley 1494V-type disconnect switches.

Phone (989) 799-6871  
Fax (989) 799-4524



# TYPE 12 SINGLE-DOOR ENCLOSURES FOR FLANGE-MOUNTED DISCONNECTS

## TECHNICAL DATA



SECTION A-A

**SUB-PANEL NOTES:**

Dimensions are from the inside of the door.

C + .32 [8,1] for flat sub-panels

C - .18 [4,5] for bent sub-panels

**DISCONNECT NOTES:**

F = 4.75 [121] when C = 8.00 [203]

F = 7.09 [180] when C = 10.00 [254]

F = 11.62 [295] when C = 12.00 [304]

F = 11.62 [295] when C = 16.00 [406]

F = 18.38 [467] for SCE-60SA3824LPPL

**HANDLE NOTES:**

On enclosures ≤ 42.00 [1067]

X = 5.50 [140] and use 5.00 [127]

padlocking handle with coin-proof.

On enclosures > 42.00 [1067]

X = 6.75 [171] and use 7.00 [178]

padlocking handle with coin-proof.

Enclosures with a height dimension < 40.00 [1016] have a 2-point door closing mechanism.

Enclosures with a height dimension of ≥ 40.00 [1016] have a 3-point door latching mechanism.

## TYPE 12

### Two-Door Disconnect Enclosures

#### Application -

Designed to house most standard type disconnects. See Disconnect Selection Guide to verify compatibility of a specific disconnect or circuit breaker, and for wire bend space. For disconnect installation information, consult our Installation Manual at [www.saginawcontrol.com](http://www.saginawcontrol.com).

#### Construction -

- 0.104" carbon steel.
- Seams continuously welded and ground smooth.
- Flange trough collar around all sides of door opening.
- Oil-resistant gasket.
- Concealed hinge.
- Removable and interchangeable doors.
- 3-point latching mechanism.
- Removable print pocket.
- Lifting eyes for easy handling.
- Ground studs on door and body.
- Collar studs provided for mounting optional panels.
- 15" removable floor stands.
- Removable center post.
- Mechanical interlock
- No door stiffeners required.
- Black zinc die cast coinproof/padlocking handle on main door with black zinc die cast padlocking handle on slave door.

**Disconnect switch (or circuit breaker) and operating mechanism are not furnished with this enclosure.**

#### Finish -

ANSI-61 gray powder coating inside and out. Optional panels are powder coated white.

#### Industry Standards -

NEMA Type 12 & Type 13  
UL Listed Type 12  
CSA Type 12  
IEC 60529 IP 55

## TYPE 12

### TWO-DOOR ENCLOSURES WITH PROVISION FOR DISCONNECT ON RIGHT FLANGE

ENCLOSURES						SUB-PANEL				
Catalog No.	Height (A)	Width (B)	Depth (C)	Product Code	List Price	Catalog No.	Panel Height (D)	Panel Width (E)	Product Code	List Price
SCE-60XEL4912LP	60.00	49.00	12.00	A2	2,142.65	SCE-60P48	56.00	44.00	P3	268.38
SCE-60XEL4918LP	60.00	49.00	18.00	A2	2,333.74	SCE-60P48	56.00	44.00	P3	268.38
SCE-60XEL4924LP	60.00	49.00	24.00	A2	2,524.84	SCE-60P48	56.00	44.00	P3	268.38
SCE-60XEL6112LP	60.00	61.00	12.00	A2	2,395.85	SCE-60P60	56.00	56.00	P3	331.68
SCE-60XEL6118LP	60.00	61.00	18.00	A2	2,609.64	SCE-60P60	56.00	56.00	P3	331.68
SCE-60XEL6124LP	60.00	61.00	24.00	A2	2,823.42	SCE-60P60	56.00	56.00	P3	331.68
SCE-72XEL6112LP	72.00	61.00	12.00	A2	2,653.84	SCE-72P60	68.00	56.00	P3	394.98
SCE-72XEL6118LP	72.00	61.00	18.00	A2	2,883.15	SCE-72P60	68.00	56.00	P3	394.98
SCE-72X7312LP	72.00	73.00	12.00	A2	2,947.64	SCE-72P72	68.00	68.00	P3	470.93
SCE-72X7318LP	72.00	73.00	18.00	A2	3,202.04	SCE-72P72	68.00	68.00	P3	470.93
SCE-72X7324LP	72.00	73.00	24.00	A2	3,457.63	SCE-72P72	68.00	68.00	P3	470.93



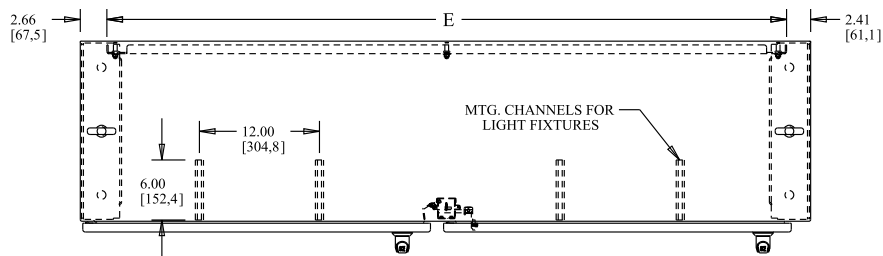
Phone (989) 799-6871

Fax (989) 799-4524



## TYPE 12 TWO-DOOR DISCONNECT ENCLOSURES

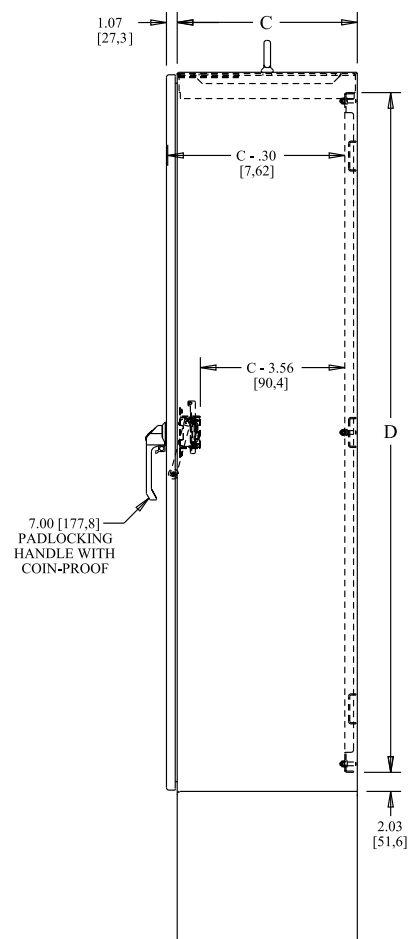
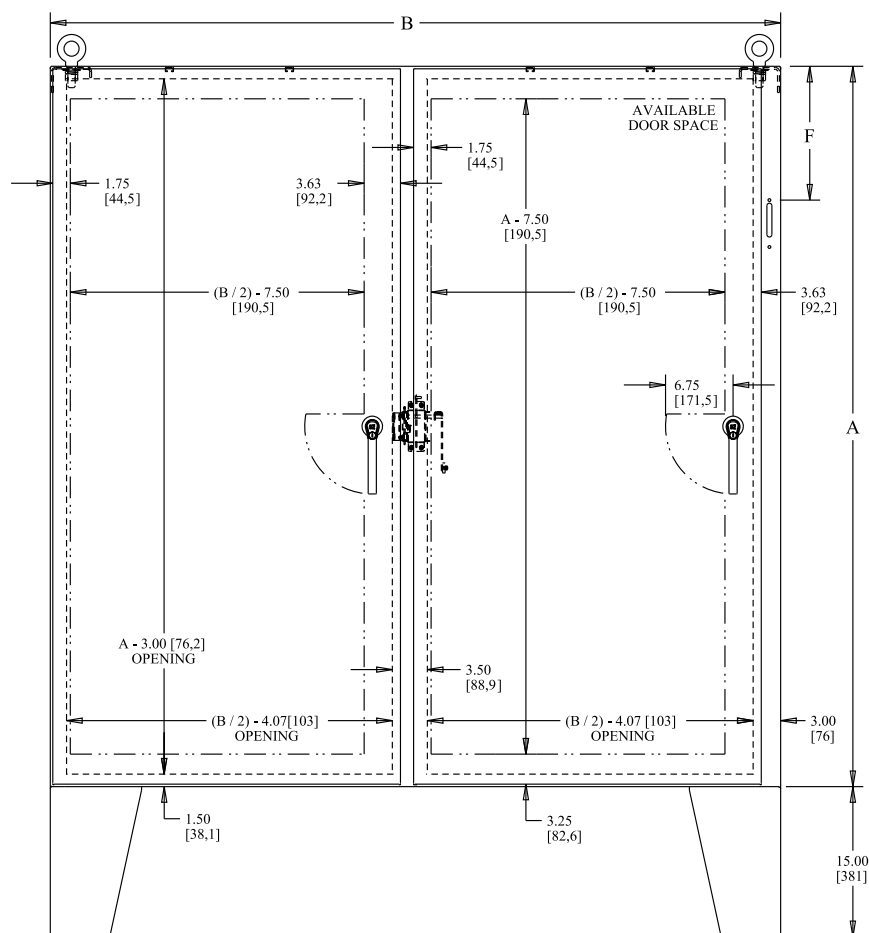
### TECHNICAL DATA



DISCONNECT NOTES:

F = 7.88 [200] when A = 60.00 [1524]

F = 13.38 [340] when A = 72.00 [1829]





## TYPE 12

### Heavy Duty Free-Standing Enclosures For Flange-Mounted Disconnects

#### Application -

Designed to house most standard type disconnects. See Disconnect Selection Guide to verify compatibility of a specific disconnect or circuit breaker, and for wire bend space. For disconnect installation information, consult our Installation Manual at [www.saginawcontrol.com](http://www.saginawcontrol.com).

#### Construction -

- 0.125" carbon steel.
- Seams continuously welded and ground smooth.
- Flange trough collar around all sides of door opening.
- Body stiffeners in large enclosures for extra rigidity.
- Heavy duty lifting eyes anchor into reinforced top.
- Removable centerposts permit easy panel installation.
- Concealed hinges.
- Black zinc die cast coinproof/padlocking handle on main door with black zinc die cast padlocking handle on slave doors.
- 3-point latching mechanism.
- Ends of latch rods have rollers for easier door closing.
- Panel supports.
- Large removable print pockets.
- Oil-resistant gasket.
- Removable panels mount on collar studs.
- Defeater on master door requires a screwdriver to open.
- Ground stud on door.
- Provisions for fluorescent light kit.

**Disconnect switch (or circuit breaker) and operating mechanism are not furnished with enclosure.**

#### Finish -

White powder coated inside and ANSI-61 gray powder coat outside. Panels are powder coated white.

#### Industry Standards -

NEMA Type 12 & Type 13  
UL Listed Type 12  
CSA Type 12  
IEC 60529 IP 55

## TYPE 12 HEAVY DUTY FREE-STANDING ENCLOSURES FOR FLANGE-MOUNTED DISCONNECTS SINGLE-DOOR ENCLOSURES

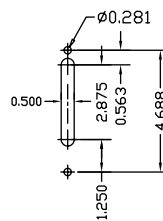
ENCLOSURES						SUB-PANEL				
Catalog No.	Height (A)	Width (B)	Depth (C)	Product Code	List Price	Catalog No.	Panel Height (D)	Panel Width (E)	Product Code	List Price
SCE-72XM2818	72.00	27.50	18.00	A2	1,565.79	SCE-64P25**	60.00	21.75	P3	Included
SCE-72XM3418	72.00	33.50	18.00	A2	1,735.38	SCE-64P31**	60.00	27.75	P3	Included
SCE-72XM4018	72.00	39.50	18.00	A2	1,904.98	SCE-64P37**	60.00	33.75	P3	Included
SCE-84XM4018	84.00	39.50	18.00	A2	2,117.56	SCE-76P37**	72.00	33.75	P3	Included
SCE-84XM4024	84.00	39.50	24.00	A2	2,177.29	SCE-76P37**	72.00	33.75	P3	Included
SCE-90XM4018	90.00	39.50	18.00	A2	2,268.06	SCE-82P37**	78.00	33.75	P3	Included
SCE-90XM4020	90.00	39.50	20.00	A2	2,291.95	SCE-82P37**	78.00	33.75	P3	Included
SCE-90XM4024	90.00	39.50	24.00	A2	2,428.09	SCE-82P37**	78.00	33.75	P3	Included

#### XM ENCLOSURES

- ⚡ \* Add the letter U to the end of the part number for enclosures with a universal disconnect cutout.

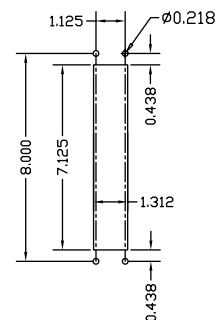
Standard Disconnect  
cutout provided

D 1



Universal Disconnect cutout

D 7



\*\* Sub-panel included with enclosure.  
Replacement panels can be ordered. Prices  
found in the accessory section.

⚡ Available within 10 working days if not in stock

Phone (989) 799-6871  
Fax (989) 799-4524



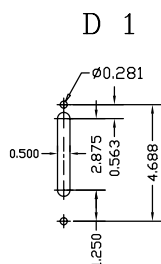
## TYPE 12 HEAVY DUTY FREE-STANDING ENCLOSURES FOR FLANGE-MOUNTED DISCONNECTS TWO-DOOR ENCLOSURES

ENCLOSURES						SUB-PANEL				
Catalog No.	Height (A)	Width (B)	Depth (C)	Product Code	List Price	Catalog No.	Panel Height (D)	Panel Width (E)	Product Code	List Price
SCE-72XM5418	72.00	53.75	18.00	A2	2,748.19	SCE-64P52**	60.00	48.00	P3	Included
SCE-72XM6618	72.00	65.75	18.00	A2	3,096.93	SCE-64P64**	60.00	60.00	P3	Included
SCE-72XM7818	72.00	77.75	18.00	A2	3,444.49	SCE-64P76**	60.00	72.00	P3	Included
SCE-72XM7824	72.00	77.75	24.00	A2	3,691.72	SCE-64P76**	60.00	72.00	P3	Included
SCE-84XM7818	84.00	77.75	18.00	A2	3,823.10	SCE-76P76**	72.00	72.00	P3	Included
SCE-84XM7824	84.00	77.75	24.00	A2	3,870.87	SCE-76P76**	72.00	72.00	P3	Included
SCE-90XM7818	90.00	77.75	18.00	A2	4,082.27	SCE-82P76**	78.00	72.00	P3	Included
SCE-90XM7820	90.00	77.75	20.00	A2	4,106.15	SCE-82P76**	78.00	72.00	P3	Included
SCE-90XM7824	90.00	77.75	24.00	A2	4,284.12	SCE-82P76**	78.00	72.00	P3	Included

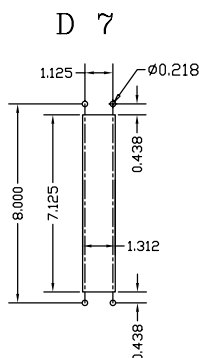
### XM ENCLOSURES

⚡ \* Add the letter U to the end of the part number for enclosures with a universal disconnect cutout.

Standard Disconnect cutout provided



Universal Disconnect cutout



\*\* Sub-panel included with enclosure.

Replacement panels can be ordered. Prices found in the accessory section.

⚡ Available within 10 working days if not in stock



## TYPE 12 Heavy Duty Free-Standing Enclosures For Flange-Mounted Disconnects

### Application -

Designed to house most standard type disconnects. See Disconnect Selection Guide to verify compatibility of a specific disconnect or circuit breaker, and for wire bend space. For disconnect installation information, consult our Installation Manual at [www.saginawcontrol.com](http://www.saginawcontrol.com).

### Construction -

- 0.125" carbon steel.
- Seams continuously welded and ground smooth.
- Flange trough collar around all sides of door opening.
- Body stiffeners in large enclosures for extra rigidity.
- Heavy duty lifting eyes anchor into reinforced top.
- Removable centerposts permit easy panel installation.
- Concealed hinges.
- Black zinc die cast coinproof/padlocking handle on main door with black zinc die cast padlocking handle on slave doors.
- 3-point latching mechanism.
- Ends of latch rods have rollers for easier door closing.
- Panel supports.
- Large removable print pockets.
- Oil-resistant gasket.
- Removable panels mount on collar studs.
- Master door is far right-hand door on all enclosures.
- Defeater on master door requires a screwdriver to open.
- Mechanical interlock activated by master door prevents slave doors from being opened first. Doors can be closed in any order.
- Ground stud on door.
- Provisions for fluorescent light kit.

**Disconnect switch (or circuit breaker) and operating mechanism are not furnished with enclosure.**

### Finish -

White powder coated inside and ANSI-61 gray powder coat outside. Panels are powder coated white.

### Industry Standards -

NEMA Type 12 & Type 13  
UL Listed Type 12  
CSA Type 12  
IEC 60529 IP 55

## TYPE 12

### Heavy Duty Free-Standing Enclosures For Flange-Mounted Disconnects

#### Application -

Designed to house most standard type disconnects. See Disconnect Selection Guide to verify compatibility of a specific disconnect or circuit breaker, and for wire bend space. For disconnect installation information, consult our Installation Manual at [www.saginawcontrol.com](http://www.saginawcontrol.com).

#### Construction -

- 0.125" carbon steel.
- Seams continuously welded and ground smooth.
- Flange trough collar around all sides of door opening.
- Body stiffeners in large enclosures for extra rigidity.
- Heavy duty lifting eyes anchor into reinforced top.
- Removable centerposts permit easy panel installation.
- Concealed hinges.
- Black zinc die cast coinproof/padlocking handle on main door with black zinc die cast padlocking handle on slave doors.
- 3-point latching mechanism.
- Ends of latch rods have rollers for easier door closing.
- Panel supports.
- Large removable print pockets.
- Oil-resistant gasket.
- Removable panels mount on collar studs.
- Master door is far right-hand door on all enclosures.
- Defeater on master door requires a screwdriver to open.
- Mechanical interlock activated by master door prevents slave doors from being opened first. Doors can be closed in any order.
- Ground stud on door.
- Provisions for fluorescent light kit.

**Disconnect switch (or circuit breaker) and operating mechanism are not furnished with enclosure.**

#### Finish -

White powder coated inside and ANSI-61 gray powder coat outside. Panels are powder coated white.

#### Industry Standards -

NEMA Type 12 & Type 13  
UL Listed Type 12  
CSA Type 12  
IEC 60529 IP 55

## TYPE 12 HEAVY DUTY FREE-STANDING ENCLOSURES FOR FLANGE-MOUNTED DISCONNECTS THREE-DOOR ENCLOSURES

ENCLOSURES						SUB-PANEL				
Catalog No.	Height (A)	Width (B)	Depth (C)	Product Code	List Price	Catalog No.	Panel Height (D)	Panel Width (E)	Product Code	List Price
SCE-72XM3EQ18	72.00	99.50	18.00	A2	4,116.91	SCE-64P31** & SCE-64P64**	60.00	27.75	P3	Included
SCE-72XM3EW18	72.00	117.50	18.00	A2	4,634.06	SCE-64P76** & SCE-64P37**	60.00	72.00	P3	Included
SCE-84XM3EW18	84.00	117.50	18.00	A2	5,166.74	SCE-76P37** & SCE-76P76**	72.00	33.75	P3	Included
SCE-84XM3EW24	84.00	117.50	24.00	A2	5,227.65	SCE-76P37** & SCE-76P76**	72.00	33.75	P3	Included
SCE-90XM3EW24	90.00	117.50	24.00	A2	5,765.10	SCE-82P37** & SCE-82P76**	78.00	33.75	P3	Included

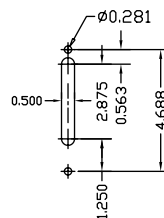
#### XM ENCLOSURES



\* Add the letter U to the end of the part number for enclosures with a universal disconnect cutout.

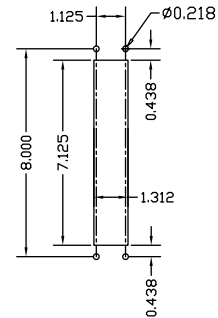
Standard Disconnect  
cutout provided

D 1



Universal Disconnect cutout

D 7



\*\* Sub-panel included with enclosure.  
Replacement panels can be ordered. Prices  
found in the accessory section.

⚡ Available within 10 working days if not in stock

Phone (989) 799-6871  
Fax (989) 799-4524



## TYPE 12 HEAVY DUTY FREE-STANDING ENCLOSURES FOR FLANGE-MOUNTED DISCONNECTS FOUR-DOOR ENCLOSURES



ENCLOSURES						SUB-PANEL				
Catalog No.	Height (A)	Width (B)	Depth (C)	Product Code	List Price	Catalog No.	Panel Height (D)	Panel Width (E)	Product Code	List Price
SCE-84XM4EW18	84.00	157.50	18.00	A2	6,714.61	SCE-76P76**(2)	72.00	72.00	P3	Included
SCE-84XM4EW24	84.00	157.50	24.00	A2	6,786.27	SCE-76P76**(2)	72.00	72.00	P3	Included
SCE-90XM4EW18	90.00	157.50	18.00	A2	6,974.97	SCE-82P76**(2)	78.00	72.00	P3	Included
SCE-90XM4EW24	90.00	157.50	24.00	A2	7,142.18	SCE-82P76**(2)	78.00	72.00	P3	Included

## FIVE-DOOR ENCLOSURES

ENCLOSURES						SUB-PANEL				
Catalog No.	Height (A)	Width (B)	Depth (C)	Product Code	List Price	Catalog No.	Panel Height (D)	Panel Width (E)	Product Code	List Price
SCE-84XM5EW18	84.00	196.75	18.00	A2	8,020.03	SCE-76P76**(2)	72.00	72.00	P3	Included
						SCE-76P37** &	72.00	33.75	P3	Included
SCE-84XM5EW24	84.00	196.75	24.00	A2	8,264.86	SCE-76P76**(2)	72.00	72.00	P3	Included
						SCE-76P37** &	72.00	33.75	P3	Included
⚡ SCE-90XM5EW18	90.00	196.75	18.00	A2	8,378.32	SCE-82P76**(2)	78.00	72.00	P3	Included
						SCE-82P37** &	78.00	33.75	P3	Included
SCE-90XM5EW24	90.00	196.75	24.00	A2	8,659.00	SCE-82P76**(2)	78.00	72.00	P3	Included
						SCE-82P37** &	78.00	33.75	P3	Included

## SIX-DOOR ENCLOSURES

ENCLOSURES						SUB-PANEL				
Catalog No.	Height (A)	Width (B)	Depth (C)	Product Code	List Price	Catalog No.	Panel Height (D)	Panel Width (E)	Product Code	List Price
SCE-84XM6EW24	84.00	235.00	24.00	A2	10,071.91	SCE-76P76**(3)	72.00	72.00	P3	Included
⚡ SCE-90XM6EW24	90.00	235.00	24.00	A2	10,442.15	SCE-82P76**(3)	78.00	72.00	P3	Included

⚡ Available within 10 working days if not in stock

## ACCESSORIES

REMOVABLE WIRE COVER						
Catalog No.	Height (A)	Width (B)	Depth (C)	Enclosure Depth	Product Code	List Price
SCE-14RMW	6.00	35.00	14.00	18.00	P2	198.69
SCE-20RMW	6.00	35.00	20.00	24.00	P2	223.52

Note: Use with enclosure width: 1 Door Enclosure 39.50", 2 Door Enclosure 77.75", 3 Door Enclosure 117.50" and all 4 & 5 Door Enclosures.

FILLER PLATES					
Catalog No.	Height (A)	Width (B)	Enclosure Depth	Product Code	List Price
SCE-72FP	60.00	9.38	72.00	P3	78.49
SCE-84FP	72.00	9.38	84.00	P3	88.62
SCE-90FP	78.00	9.38	86.00 or 90.00	P3	96.21

\*\* Sub-panel included with enclosure.  
Replacement panels can be ordered. Prices found in the accessory section.

## TYPE 12 Heavy Duty Free-Standing Enclosures For Flange-Mounted Disconnects

### Application -

Designed to house most standard type disconnects. See Disconnect Selection Guide to verify compatibility of a specific disconnect or circuit breaker, and for wire bend space. For disconnect installation information, consult our Installation Manual at [www.saginawcontrol.com](http://www.saginawcontrol.com).

### Construction -

- 0.125" carbon steel.
- Seams continuously welded and ground smooth.
- Flange trough collar around all sides of door opening.
- Body stiffeners in large enclosures for extra rigidity.
- Heavy duty lifting eyes anchor into reinforced top.
- Removable centerposts permit easy panel installation.
- Concealed hinges.
- Black zinc die cast coinproof/padlocking handle on main door with black zinc die cast padlocking handle on slave doors.
- 3-point latching mechanism.
- Ends of latch rods have rollers for easier door closing.
- Panel supports.
- Large removable print pockets.
- Oil-resistant gasket.
- Removable panels mount on collar studs.
- Master door is far right-hand door on all enclosures.
- Defeater on master door requires a screwdriver to open.
- Mechanical interlock activated by master door prevents slave doors from being opened first. Doors can be closed in any order.
- Ground stud on door.
- Provisions for fluorescent light kit.

**Disconnect switch (or circuit breaker) and operating mechanism are not furnished with enclosure.**

### Finish -

White powder coated inside and ANSI-61 gray powder coat outside. Panels are powder coated white.

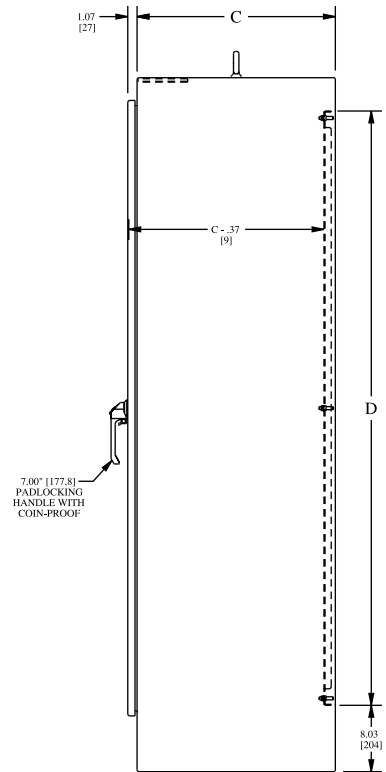
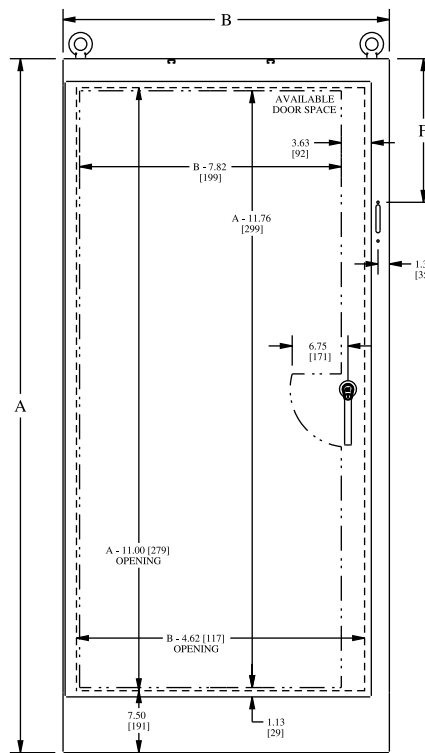
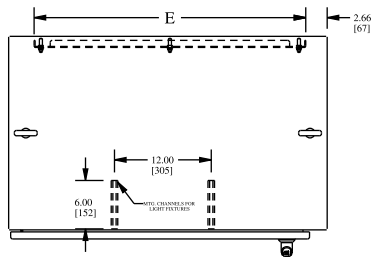
### Industry Standards -

NEMA Type 12 & Type 13  
UL Listed Type 12  
CSA Type 12  
IEC 60529 IP 55

# TYPE 12 FREE-STANDING ENCLOSURES FOR FLANGE-MOUNTED DISCONNECTS

## TECHNICAL DATA

### SINGLE-DOOR ENCLOSURE



#### STANDARD DISCONNECTS:

F = 11.88 [301,7] when A = 72.00 [1828,8]

F = 17.38 [441,4] when A = 84.00 [2133,6]

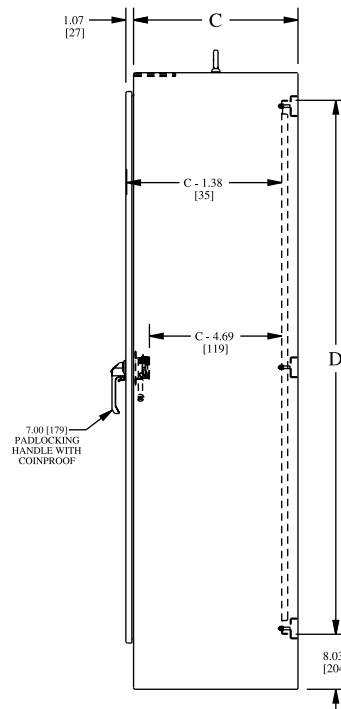
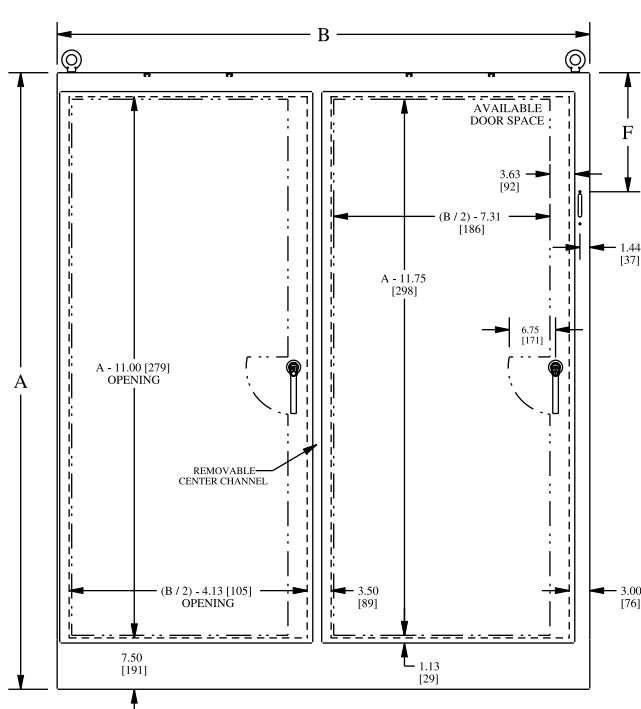
F = 20.38 [517,6] when A = 90.00 [228,6]

#### U TYPE (Universal) DISCONNECTS:

F = 11.88 [301,8] when A = 72

F = 17.63 [447,8] when A = 84 & 90

### TWO-DOOR ENCLOSURE



#### STANDARD DISCONNECTS:

F = 11.88 [301,7] when A = 72.00 [1828,8]

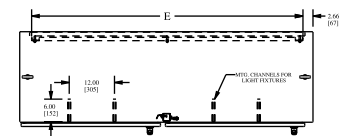
F = 17.38 [441,4] when A = 84.00 [2133,6]

F = 20.38 [517,6] when A = 90.00 [228,6]

#### U TYPE (Universal) DISCONNECTS:

F = 11.88 [301,8] when A = 72

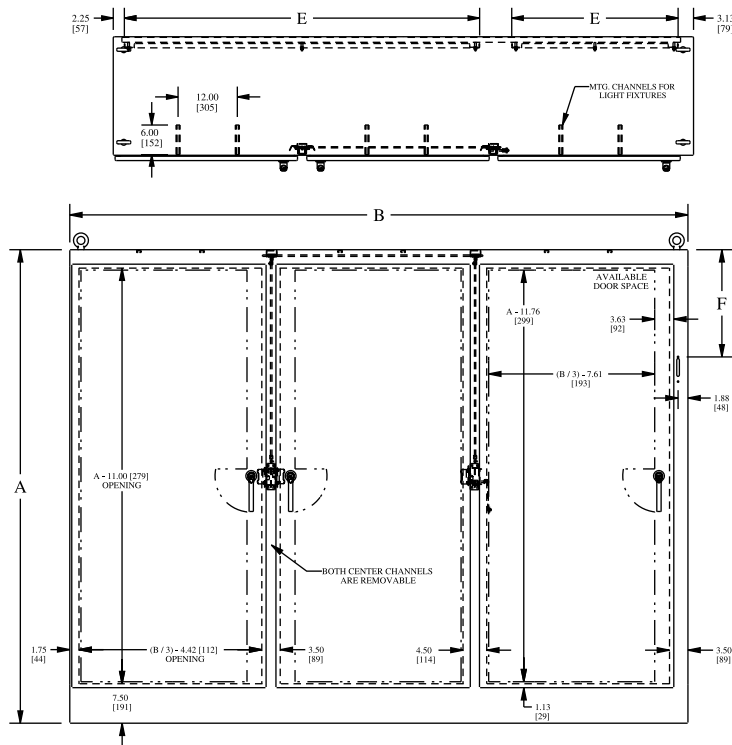
F = 17.63 [447,8] when A = 84 & 90



# TYPE 12 FREE-STANDING ENCLOSURES FOR FLANGE-MOUNTED DISCONNECTS

## TECHNICAL DATA

### THREE-DOOR ENCLOSURE



#### STANDARD DISCONNECTS:

$F = 11.88$  [301,7] when  $A = 72.00$  [1828,8]

$F = 17.38$  [441,4] when  $A = 84.00$  [2133,6]

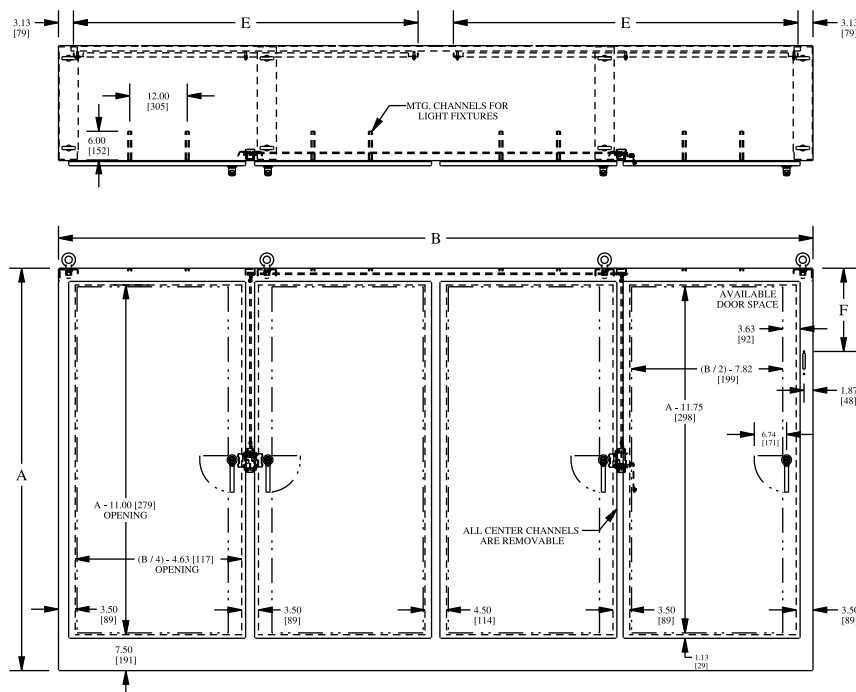
$F = 20.38$  [517,6] when  $A = 90.00$  [228,6]

#### U TYPE (Universal) DISCONNECTS:

$F = 11.88$  [301,8] when  $A = 72$

$F = 17.63$  [447,8] when  $A = 84$  &  $90$

### FOUR-DOOR ENCLOSURE



#### STANDARD DISCONNECTS:

$F = 11.88$  [301,7] when  $A = 72.00$  [1828,8]

$F = 17.38$  [441,4] when  $A = 84.00$  [2133,6]

$F = 20.38$  [517,6] when  $A = 90.00$  [228,6]

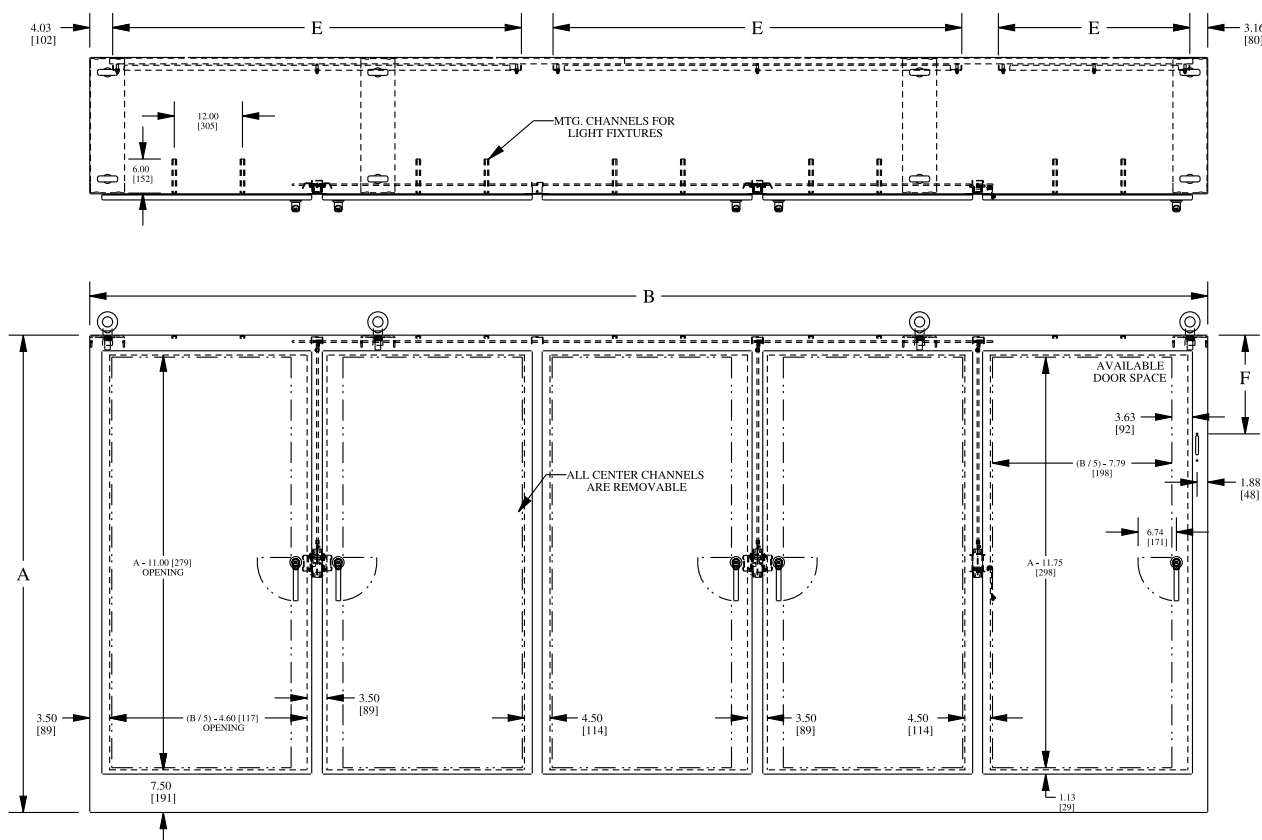
#### U TYPE (Universal) DISCONNECTS:

$F = 17.63$  [447,8]

# TYPE 12 FREE-STANDING ENCLOSURES FOR FLANGE-MOUNTED DISCONNECTS

## TECHNICAL DATA

### FIVE-DOOR ENCLOSURE



#### STANDARD DISCONNECTS:

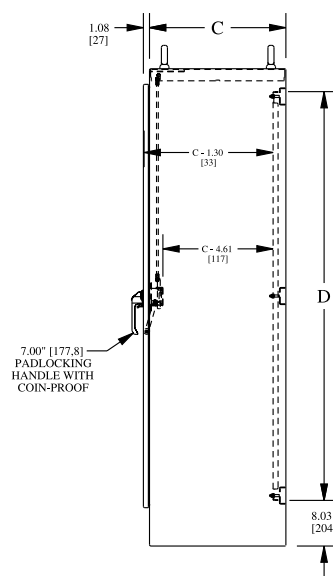
$F = 11.88$  [301,7] when  $A = 72.00$  [1828,8]

$F = 17.38$  [441,4] when  $A = 84.00$  [2133,6]

$F = 20.38$  [517,6] when  $A = 90.00$  [228,6]

#### U TYPE (Universal) DISCONNECTS:

$F = 17.63$  [447,8]

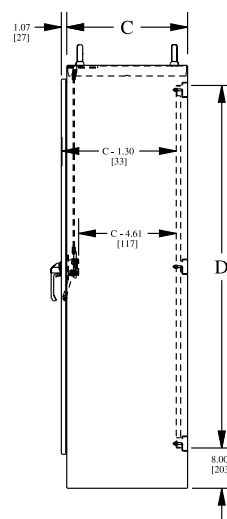


Phone (989) 799-6871

Fax (989) 799-4524

**SCE** SAGINAW  
CONTROL &  
ENGINEERING  
Your Enclosure Source®

## SIX-DOOR ENCLOSURE


$$F = 17.63 [447,8]$$



## TYPE 12

### Modular Enclosures For Flange-Mounted Disconnects

#### Application -

Can be bolted together in any desired multiple door arrangement for maximum versatility. Slave enclosures can be added or removed as required.

Designed to house most standard type disconnect. See Disconnect Selection Guide to verify compatibility of a specific disconnect or circuit breaker, and for wire bend space. For disconnect installation information, consult our Installation Manual at [www.saginawcontrol.com](http://www.saginawcontrol.com).

#### Construction -

- 0.125" carbon steel.
- Seams continuously welded and ground smooth.
- Body stiffeners for extra rigidity.
- Door and side openings are flanged to provide extra strength and smooth edges.
- Flange trough collar around all sides of door opening.
- Heavy duty lifting eyes anchor into reinforced top.
- Concealed hinge.
- Removable and interchangeable doors.
- Black zinc die cast coinproof/padlocking handle on main door of disconnect enclosures. Black zinc die cast padlocking handle on all other doors.
- 3-point latching mechanism.
- Rollers on ends of latch rods for easier door closing.
- Panel supports.
- Large removable print pockets.
- Oil-resistant door gasket.
- Removable panels mount on collar studs.
- Mechanical interlock standard on each enclosure. Parts required to connect interlock system between adjacent enclosures are provided.
- SCE-MODGK sold separately.
- Ground stud on door and body.
- Provisions for fluorescent light kit.

#### Finish -

ANSI-61 gray finish inside and out. Panels are powder coated white.

#### Industry Standards -

NEMA Type 12 & Type 13  
UL Listed Type 12  
CSA Type 12  
IEC 60529 IP 55

#### Note -

Disconnect ordered separately.

## TYPE 12 MODULAR ENCLOSURES

### SINGLE-DOOR DISCONNECT ENCLOSURE (LEFT SIDE OPEN)

ENCLOSURES						SUB-PANEL				
Catalog No.	Height (A)	Width (B)	Depth (C)	Product Code	List Price	Catalog No.	Panel Height (D)	Panel Width (E)	Product Code	List Price
⚡SCE-MOD72X4018	72.00	40.00	18.00	A2	1,693.58	SCE-64P37*	60.00	33.75	P3	Included
⚡SCE-MOD84X4018	84.00	40.00	18.00	A2	1,883.48	SCE-76P37*	72.00	33.75	P3	Included
⚡SCE-MOD84X4024	84.00	40.00	24.00	A2	2,054.27	SCE-76P37*	72.00	33.75	P3	Included

### TWO-DOOR DISCONNECT ENCLOSURE (LEFT SIDE OPEN)

ENCLOSURES						SUB-PANEL				
Catalog No.	Height (A)	Width (B)	Depth (C)	Product Code	List Price	Catalog No.	Panel Height (D)	Panel Width (E)	Product Code	List Price
⚡SCE-MOD72X7818	72.00	78.00	18.00	A2	3,063.50	SCE-64P76*	60.00	72.00	P3	Included
⚡SCE-MOD84X7818	84.00	78.00	18.00	A2	3,397.91	SCE-76P76*	72.00	72.00	P3	Included
⚡SCE-MOD84X7824	84.00	78.00	24.00	A2	3,629.61	SCE-76P76*	72.00	72.00	P3	Included

### SINGLE-DOOR SLAVE ENCLOSURE (BOTH SIDES OPEN)

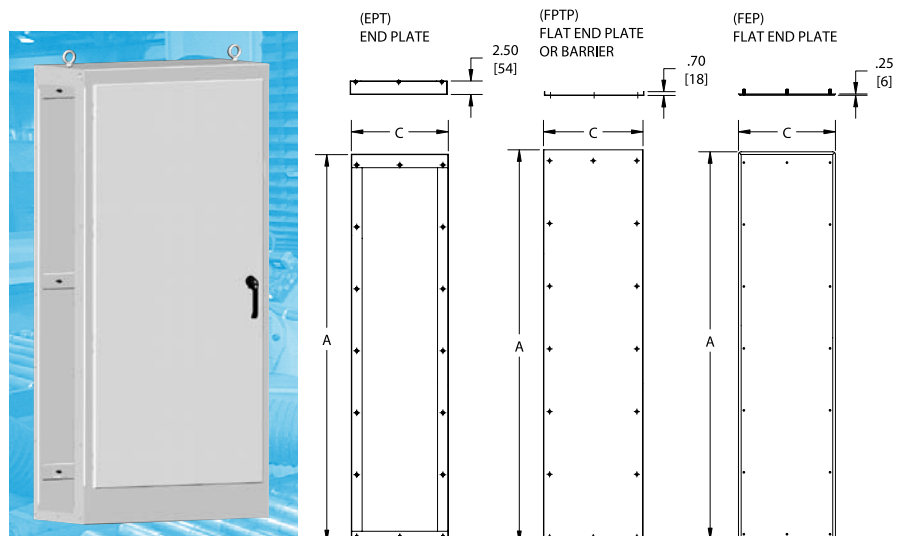
ENCLOSURES						SUB-PANEL				
Catalog No.	Height (A)	Width (B)	Depth (C)	Product Code	List Price	Catalog No.	Panel Height (D)	Panel Width (E)	Product Code	List Price
⚡SCE-MOD724018	72.00	40.00	18.00	A2	1,672.08	SCE-64P37*	60.00	33.75	P3	Included
⚡SCE-MOD844018	84.00	40.00	18.00	A2	1,859.60	SCE-76P37*	72.00	33.75	P3	Included
⚡SCE-MOD844024	84.00	40.00	24.00	A2	2,030.39	SCE-76P37*	72.00	33.75	P3	Included

⚡ Available within 10 working days if not in stock

### TWO-DOOR SLAVE ENCLOSURE (BOTH SIDES OPEN)

ENCLOSURES						SUB-PANEL				
Catalog No.	Height (A)	Width (B)	Depth (C)	Product Code	List Price	Catalog No.	Panel Height (D)	Panel Width (E)	Product Code	List Price
⚡SCE-MOD727718	72.00	77.00	18.00	A2	3,042.00	SCE-64P76*	60.00	72.00	P3	Included
⚡SCE-MOD847718	84.00	77.00	18.00	A2	3,374.03	SCE-76P76*	72.00	72.00	P3	Included
⚡SCE-MOD847724	84.00	77.00	24.00	A2	3,603.34	SCE-76P76*	72.00	72.00	P3	Included

\* Sub-panel included with enclosure. Replacement plates can be ordered. Prices found in the accessory section.



Catalog No.	Size	Enclosure Depth	Enclosure Height	Product Code	List Price
⚡SCE-MOD72EPT	72.00 x 18.00	18.00	72.00	P2	326.59
⚡SCE-MOD84EPT	84.00 x 18.00	18.00	84.00	P2	358.87
⚡SCE-MOD8424EPT	84.00 x 24.00	24.00	84.00	P2	391.16

Catalog No.	Size	Enclosure Depth	Enclosure Height	Product Code	List Price
⚡SCE-MOD72FTPT	72.00 x 18.25	18.00	72.00	P2	238.42
⚡SCE-MOD84FTPT	84.00 x 18.25	18.00	84.00	P2	262.02
⚡SCE-MOD8424FTPT	84.00 x 24.25	24.00	84.00	P2	293.07

Catalog No.	Size	Enclosure Depth	Enclosure Height	Product Code	List Price
⚡SCE-MOD72FEP	71.50 x 17.50	18.00	72.00	P2	288.09
⚡SCE-MOD84FEP	83.50 x 17.50	18.00	84.00	P2	311.69
⚡SCE-MOD8424FEP	83.50 x 23.50	24.00	84.00	P2	342.74

Catalog No.	Enclosure Depth	Enclosure Height	Product Code	List Price
⚡SCE-MODGK	18.00 & 24.00	72.00 & 84.00	P2	79.47

Catalog No.	Size	Enclosure Depth	Product Code	List Price
SCE-14RMW	6.00 x 35.00 x 14.00	18.00	P2	198.69
SCE-20RMW	6.00 x 35.00 x 20.00	24.00	P2	223.52

Catalog No.	Size	Enclosure Height	Product Code	List Price
SCE-72FP	60.00 x 9.38	72.00	P3	78.49
SCE-84FP	72.00 x 9.38	84.00	P3	88.62
SCE-90FP	78.00 x 9.38	90.00	P3	96.21

⚡ Available within 10 working days if not in stock

## MODULAR ENCLOSURE ACCESSORIES

### End Plates

Designed to provide a sealed cover for the open end of a modular enclosure. Provides additional wiring space along the side of the enclosure. Gasket and mounting hardware is included. Made from 0.06" carbon steel and coated with ANSI-61 gray powder coat inside and out.

### Barrier/Flat End Plates

Designed to serve as a barrier between two modular enclosure sections. Also can be used to provide a lower profile sealed cover for the open end of a modular enclosure. Mounting holes. Gasket and mounting hardware is included. Made from 0.06" carbon steel and coated with ANSI-61 gray powder coat inside and out.

### Flat End Plates

Designed to provide a lower profile sealed cover with a finished appearance for the open end of a modular enclosure. Studded for easy installation. Gasket and mounting hardware is included. Made from 0.075" carbon steel and coated with ANSI-61 gray powder coat inside and out.

### Gasket and Bolt Kit

Designed to be used as an additional gasket or to replace gasket kits when changing modular enclosure configurations. Includes oil resistant gasket and zinc coated nuts and bolts.

### Removable Wire Cover

Designed to cover the wires in the bottom of the enclosure. One wire cover required per door. Made from 0.075" carbon steel and powder coated white.

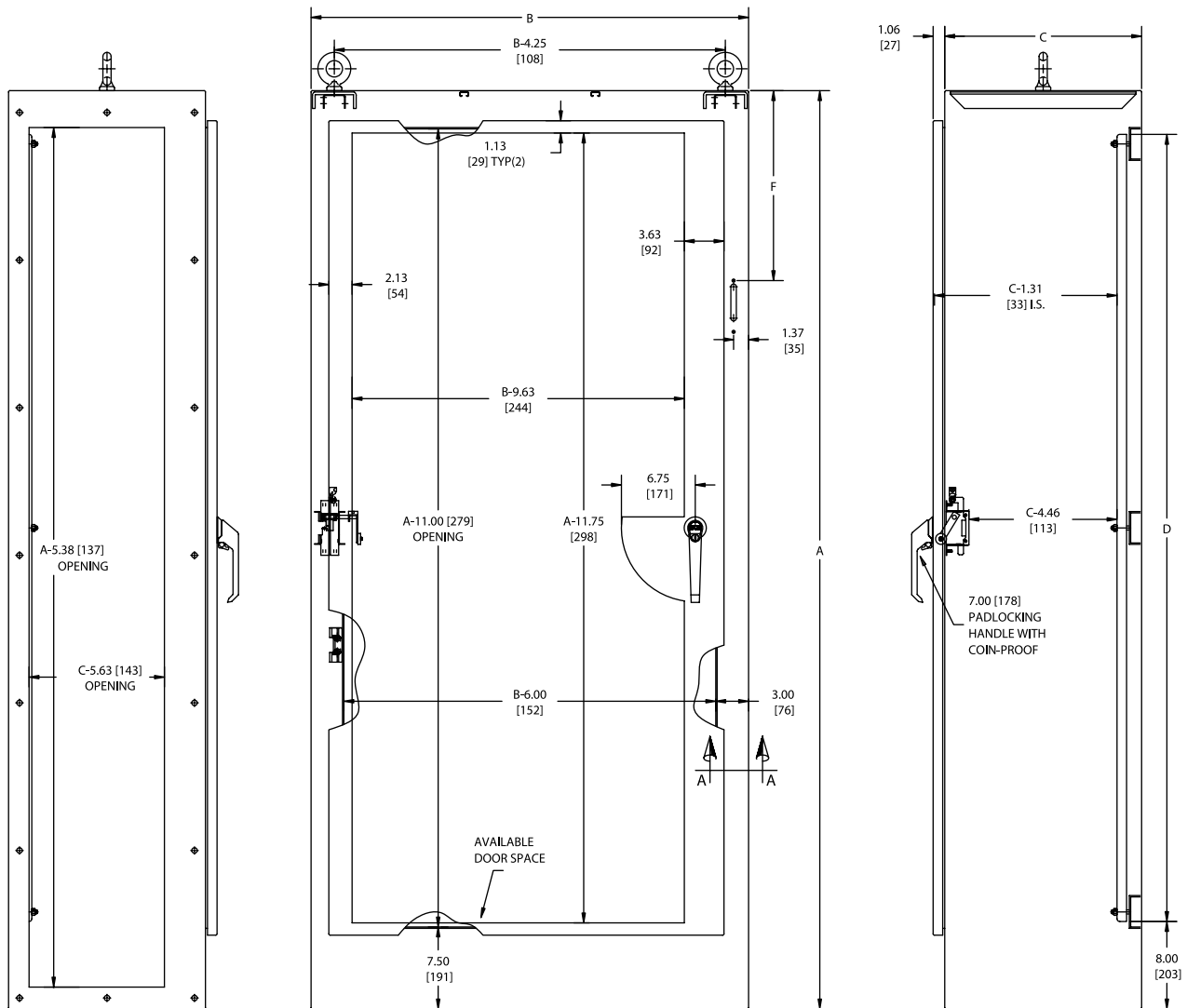
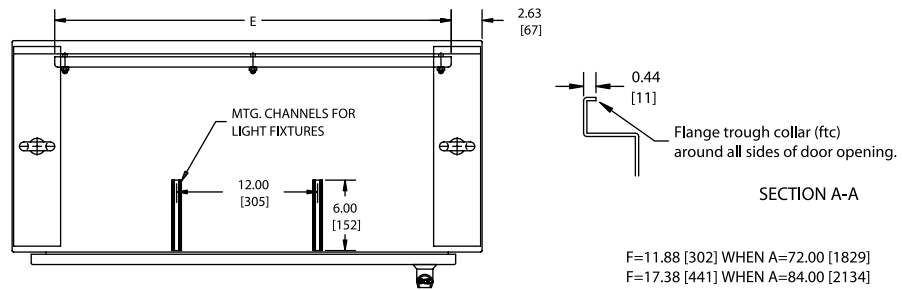
### Filler Plates

Designed to provide additional mounting surface between sub-plates or sections of a modular enclosure. Slotted mounting holes allow flexible installation. Panels are powder coated white.

# TYPE 12 MODULAR ENCLOSURES

## TECHNICAL DATA

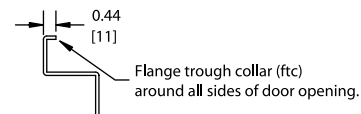
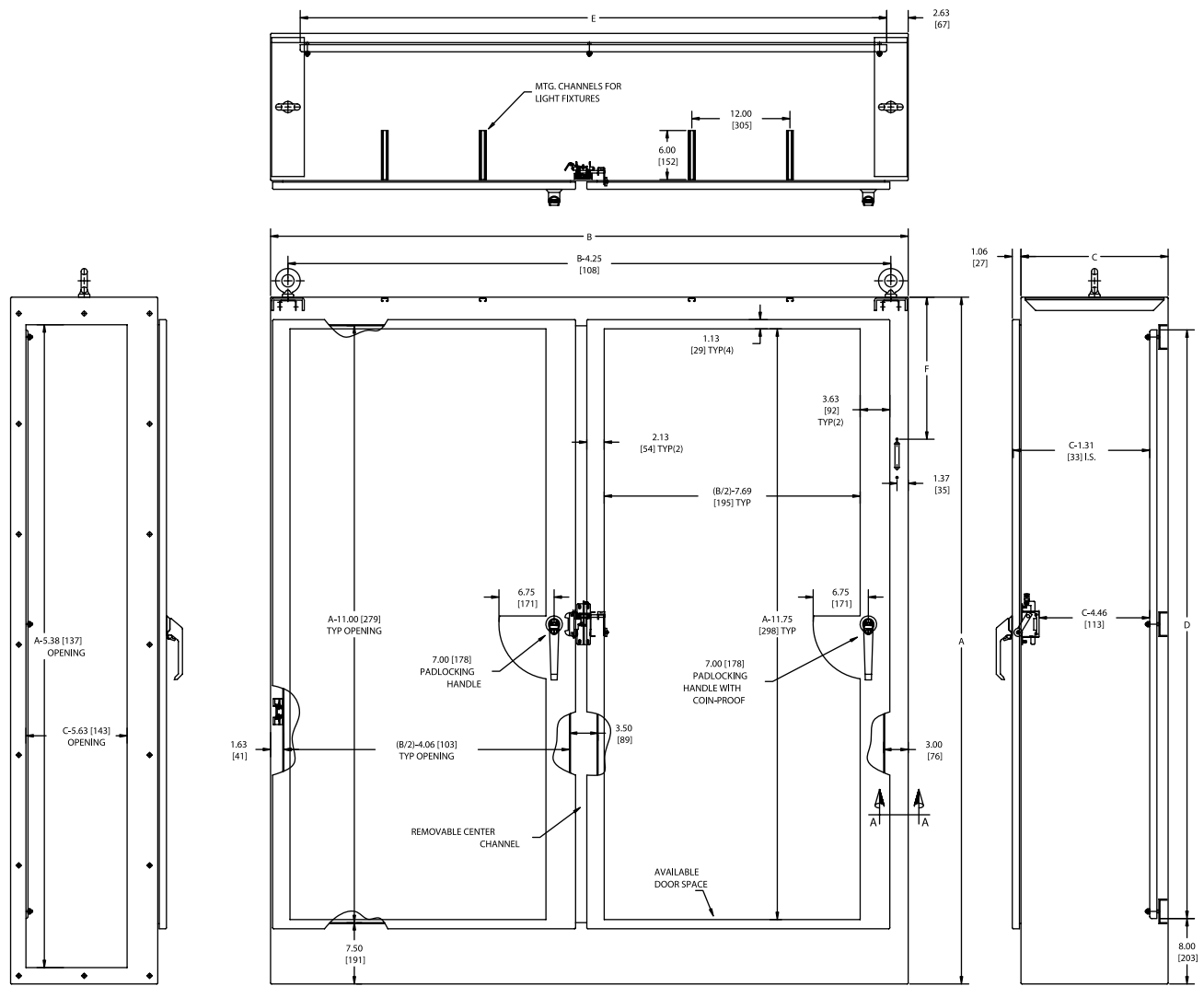
### SINGLE-DOOR MODULAR ENCLOSURE WITH DISCONNECT (LEFT SIDE OPEN)



# TYPE 12 MODULAR ENCLOSURES

## TECHNICAL DATA

### TWO-DOOR MODULAR ENCLOSURE WITH DISCONNECT (LEFT SIDE OPEN)



SECTION A-A

F=11.88 [302] WHEN A=72.00 [1829]  
F=17.38 [441] WHEN A=84.00 [2134]

SECTION A-A

Diagram showing the elevation view of the door opening with dimensions and components:

- Overall width:  $E$
- Top flange thickness:  $2.63$  [67]
- Flange trough collar (ftc) around all sides of door opening.
- Flange thickness:  $0.44$  [11]
- MTG. CHANNELS FOR LIGHT FIXTURES
- Channel height:  $12.00$  [305]
- Channel width:  $6.00$  [152]

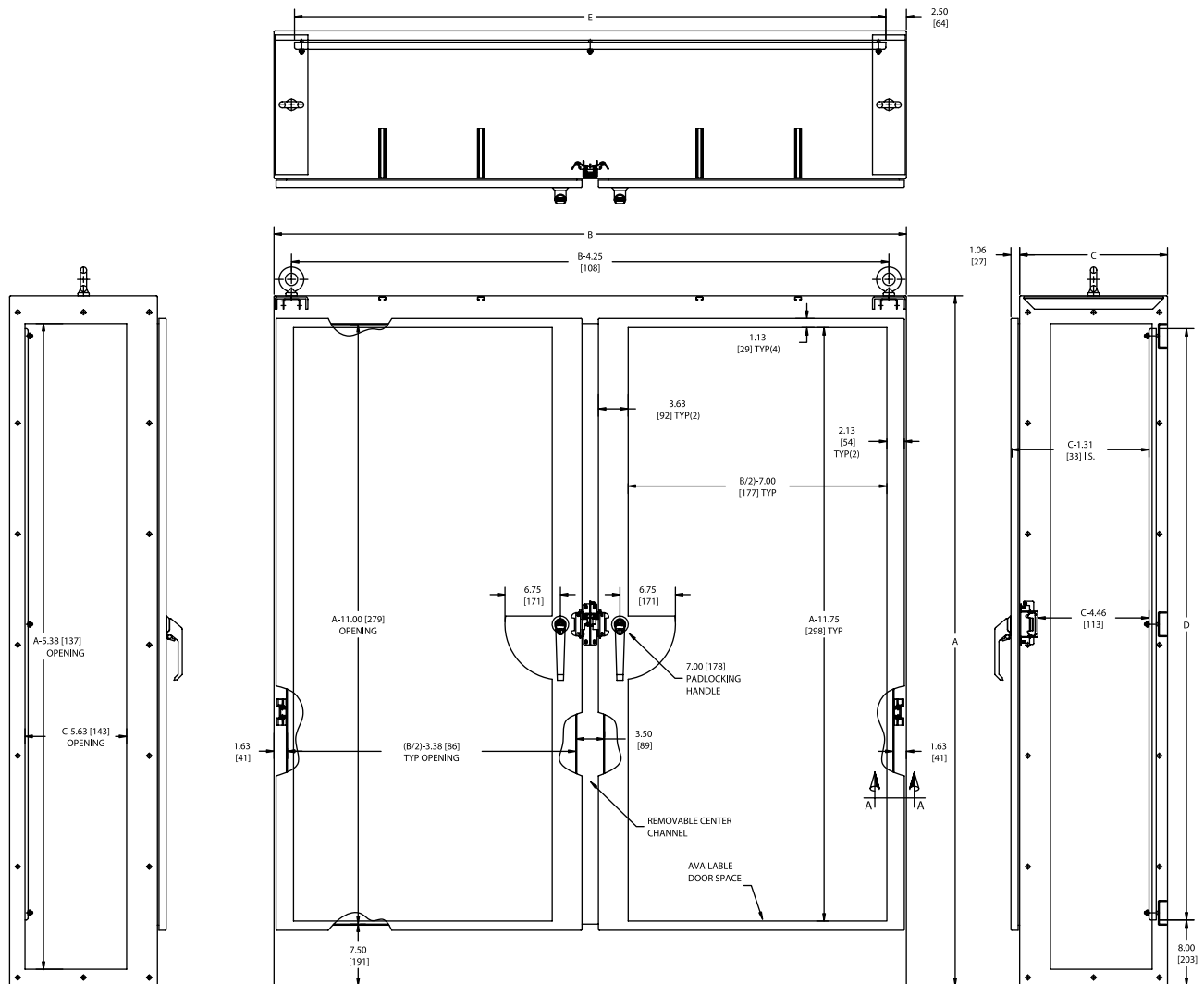
The image contains three technical drawings of a door assembly:

- Front View (Left):** Shows the door with a handle on the right. Callouts include:
  - A-5.38 [137] OPENING
  - C-5.63 [143] OPENING
- Side View (Middle):** Shows the door's profile with various dimensions and callouts:
  - Top width: B, B-4.25 [108]
  - Top edge: 1.13 [29] TYP(2)
  - Inner width: B-9.63 [244]
  - Inner height: A-11.00 [279] OPENING
  - Inner height: A-11.75 [298]
  - Inner width: 3.63 [92]
  - Inner height: 7.00 [178] PADLOCKING HANDLE
  - Inner width: B-6.00 [152] OPENING
  - Inner height: 7.50 [191] AVAILABLE DOOR SPACE
  - Bottom edge: 3.00 [76]
  - Section line: A-A
- Detail View (Right):** Shows a close-up of the door's top and side edges with dimensions:
  - Top edge: 1.06 [27]
  - Top width: C
  - Top edge: C-1.31 [33] I.S.
  - Side edge: C-4.46 [113]
  - Side edge: D
  - Bottom edge: 8.00 [203]

# TYPE 12 MODULAR ENCLOSURES

## TECHNICAL DATA

### TWO-DOOR SLAVE ENCLOSURE (BOTH SIDES OPEN)



SECTION A-A