

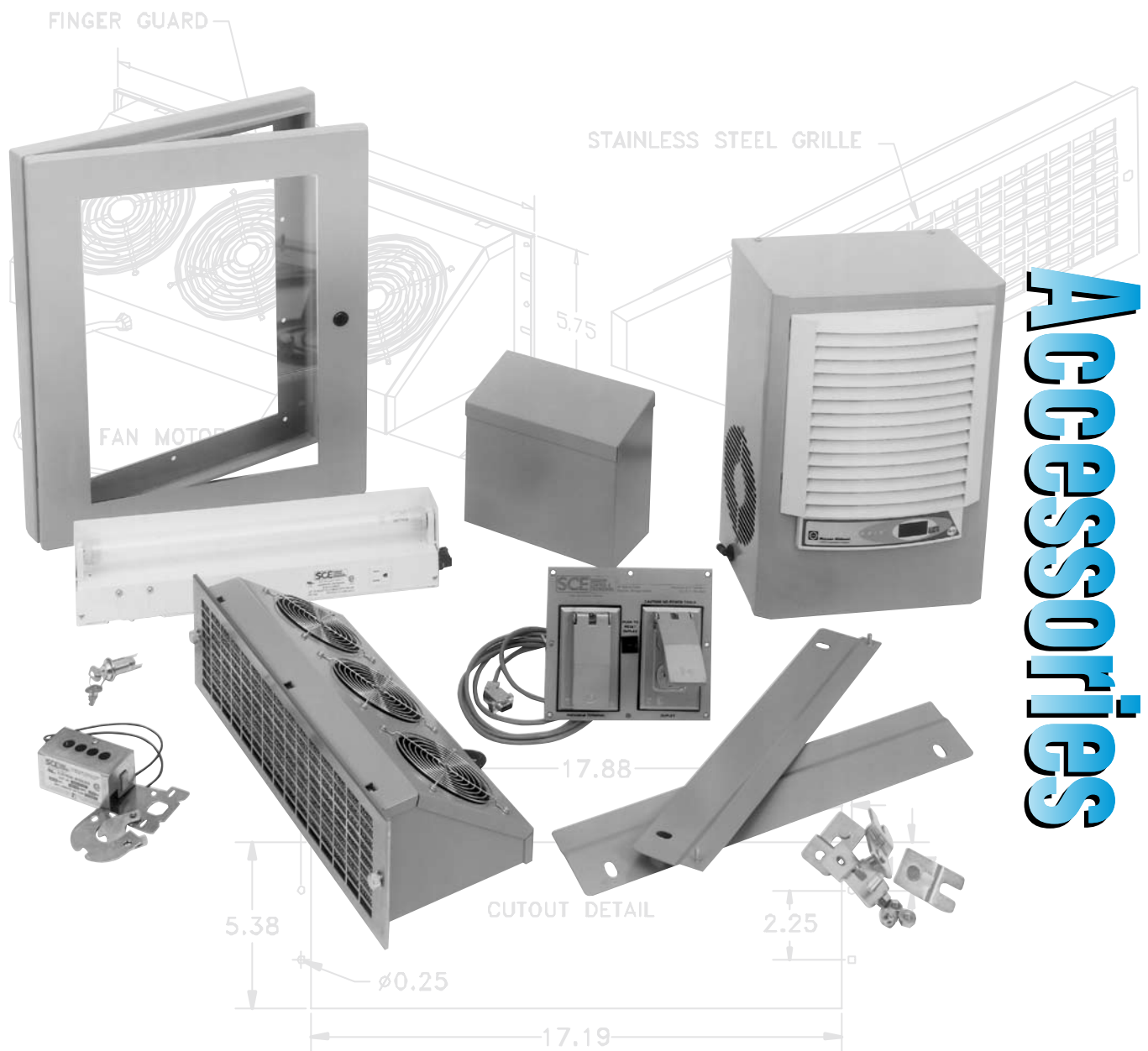
Accessories

Saginaw Control & Engineering offers hundreds of accessories that complement our enclosure product line, making it easy to modify or add special features to standard products.

Product Overview

- Air Conditioners
- Casters, Leveling Pads
- Door Latches and Handles
- Door Stop Kits
- Drip Shields and Rain Hoods
- Fans, Fan Packages, Blower Packages
- Folding Shelves and Pull Out Shelves
- Floor Stands, Mounting Strips, Mounting Feet
- Fluorescent Lighting
- Grounding Bars, Grounding Straps
- Heaters
- Hole Plugs
- Interior and Exterior Print Pockets
- Louvers, Filters, Filter and Grille Packages
- Mechanical and Electrical Interlocks
- Program Ports and Convenience Receptacles
- Subpanels, Galvanized Subpanels
- Swing Out Panel Kits
- Terminal Kits
- Windows and Window Kits
- Wire Covers

Accessories



SUB-PANELS

Construction -


Subpanels are constructed from carbon steel. Size determines steel thickness. Optional bracing available on large sub-panels.

Finish -

Powder coated white.

Options -

(/f) Add SS6 to the end of a sub-panel part number for a 316 stainless steel sub-panel. (Example: SCE-30P30SS6)

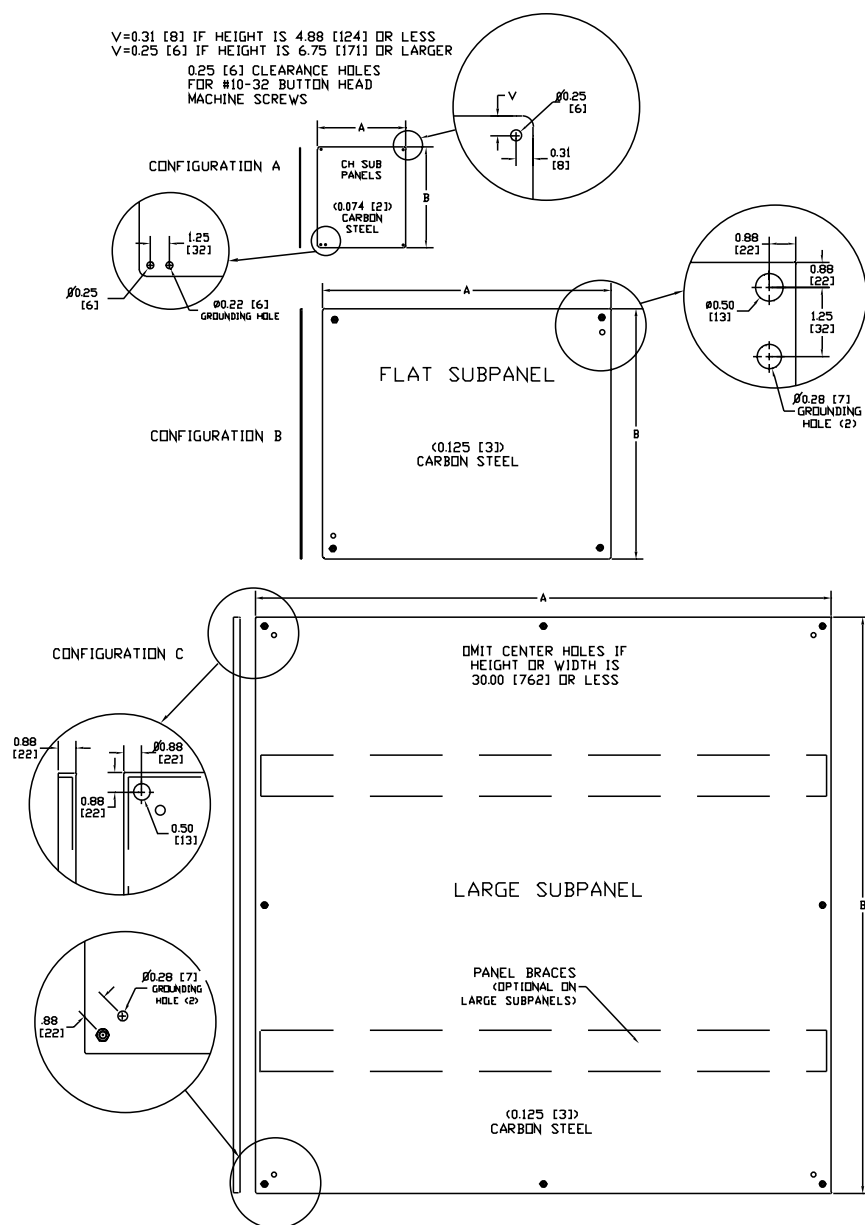
 Available within 10 working days if not in stock

SUB-PANELS

Catalog No.	Height (A)	Width (B)	Configuration	Edge Flanges	Product Code	List Price
SCE-6P4	4.88	2.88	A	Flat	P3	3.01
SCE-6P6	4.88	4.88	A	Flat	P3	3.61
SCE-8P6	6.75	4.88	A	Flat	P3	4.17
SCE-8P8	6.75	6.88	A	Flat	P3	4.89
SCE-10P8	8.75	6.88	A	Flat	P3	5.70
SCE-10P10	8.75	8.88	A	Flat	P3	6.73
SCE-12DLP12	9.00	9.00	B	Flat	P3	13.67
SCE-12P24	9.00	21.00	C	Four	P3	27.86
SCE-12P6	10.75	4.88	A	Flat	P3	5.35
SCE-12P10	10.75	8.88	A	Flat	P3	7.72
SCE-12P12	10.75	10.88	A	Flat	P3	9.08
SCE-14P8	12.75	6.88	A	Flat	P3	7.39
SCE-14P12	12.75	10.88	A	Flat	P3	10.13
SCE-16P12	13.00	9.00	B	Flat	P3	14.81
SCE-16DLP14	13.00	11.00	B	Flat	P3	17.72
SCE-16P16	13.00	13.00	B	Flat	P3	24.57
SCE-16P10	14.75	8.88	A	Flat	P3	9.90
SCE-16P14	14.75	12.88	A	Flat	P3	19.95
SCE-20P12	17.00	9.00	B	Flat	P3	23.14
SCE-20P16	17.00	13.00	B	Flat	P3	30.37
SCE-20P20	17.00	17.00	B	Flat	P3	35.44
SCE-24P16	21.00	13.00	C	Four	P3	32.92
SCE-24P20	21.00	17.00	C	Four	P3	45.57
SCE-24P24	21.00	21.00	C	Four	P3	53.18
SCE-30P16	27.00	13.00	C	Four	P3	45.57
SCE-30P20	27.00	17.00	C	Four	P3	55.70
SCE-30P24	27.00	21.00	C	Four	P3	63.29
SCE-30P30	27.00	27.00	C	Four	P3	83.55
SCE-36P16	33.00	13.00	C	Four	P3	53.18
SCE-36P24	33.00	21.00	C	Four	P3	75.96
SCE-36P30	33.00	27.00	C	Four	P3	101.27
SCE-36P36	33.00	33.00	C	Four	P3	118.99
SCE-40P24	37.00	21.00	C	Four	P3	86.08
SCE-42P24	39.00	21.00	C	Four	P3	91.14
SCE-42P30	39.00	27.00	C	Four	P3	116.47
SCE-42P36	39.00	33.00	C	Four	P3	136.72
SCE-42P42	39.00	39.00	C	Four	P3	156.97
SCE-48P48	44.00	44.00	C	Four	P3	212.67
SCE-48P24	45.00	21.00	C	Four	P3	98.74
SCE-48P30	45.00	27.00	C	Four	P3	129.13
SCE-48P36	45.00	33.00	C	Four	P3	154.46
SCE-48P42	45.00	39.00	C	Four	P3	177.24
SCE-60BFP42	56.00	38.00	C	Four	P3	230.41
SCE-60P48	56.00	44.00	C	Four	P3	268.38
SCE-60P60	56.00	56.00	C	Four	P3	331.68
SCE-60P24	57.00	21.00	C	Four	P3	129.13
SCE-60P30	57.00	27.00	C	Four	P3	159.52
SCE-60P36	57.00	33.00	C	Four	P3	189.89
SCE-64P25	60.00	21.75	C	Four	P3	159.52
SCE-64P31	60.00	27.75	C	Four	P3	167.11
SCE-64P37	60.00	33.75	C	Four	P3	182.30
SCE-64P52	60.00	48.00	C	Four	P3	334.21
SCE-64P64	60.00	60.00	C	Four	P3	362.06
SCE-64P76	60.00	72.00	C	Four	P3	425.36

SUB-PANELS (continued)

Catalog No.	Height (A)	Width (B)	Configuration	Edge Flanges	Product Code	List Price
SCE-72P60	68.00	56.00	C	Four	P3	394.98
SCE-72P72	68.00	68.00	C	Four	P3	470.93
SCE-72P30	69.00	27.00	C	Four	P3	210.15
SCE-72P36	69.00	33.00	C	Four	P3	225.33
SCE-76P37	72.00	33.75	C	Four	P3	250.65
SCE-76P76	72.00	72.00	C	Four	P3	498.78
SCE-82P37	78.00	33.75	C	Four	P3	278.51
SCE-82P76	78.00	72.00	C	Four	P3	501.32

**SUB-PANELS****Construction -**

Subpanels are constructed from carbon steel. Size determines steel thickness. Optional bracing available on large sub-panels.

Finish -

Powder coated white.

Options -

(/) Add SS6 to the end of a sub-panel part number for a 316 stainless steel sub-panel. (Example: SCE-30P30SS6)

⚡ Available within 10 working days if not in stock

GALVANIZED SUB-PANELS

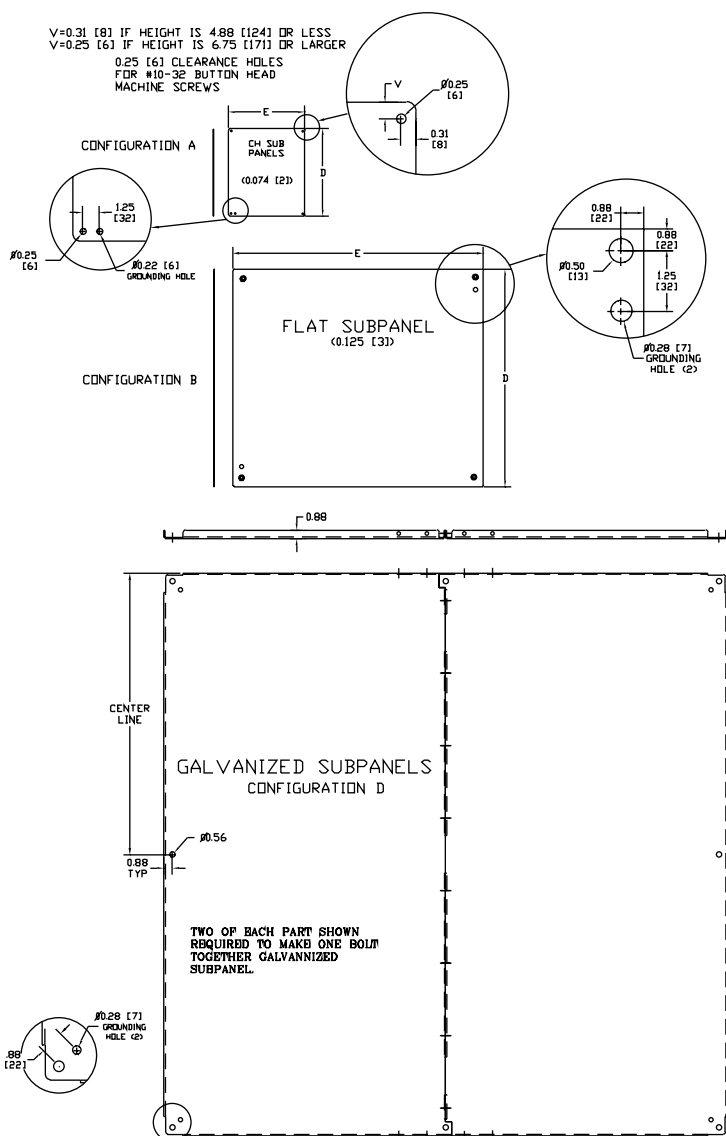
Subpanels are constructed from galvanized steel for direct bonding of electrical components. Size determines steel thickness.

GALVANIZED SUB-PANELS

Catalog No.	Height (D)	Width (E)	Configuration	Edge Flanges	Product Code	List Price
SCE-6P4GALV	4.88	2.88	A	Flat	P3	3.01
SCE-6P6GALV	4.88	4.88	A	Flat	P3	3.61
SCE-8P6GALV	6.75	4.88	A	Flat	P3	4.17
SCE-8P8GALV	6.75	6.88	A	Flat	P3	4.89
SCE-10P8GALV	8.75	6.88	A	Flat	P3	5.70
SCE-10P10GALV	8.75	8.88	A	Flat	P3	6.73
SCE-12DLP12GALV	9.00	9.00	B	Flat	P3	13.67
SCE-12P24GALV	9.00	21.00	C	Four	P3	27.86
SCE-12P6GALV	10.75	4.88	A	Flat	P3	5.35
SCE-12P10GALV	10.75	8.88	A	Flat	P3	7.72
SCE-12P12GALV	10.75	10.88	A	Flat	P3	9.08
SCE-14P8GALV	12.75	6.88	A	Flat	P3	7.39
SCE-14P12GALV	12.75	10.88	A	Flat	P3	10.13
SCE-16P12GALV	13.00	9.00	B	Flat	P3	14.81
SCE-16DLP14GALV	13.00	11.00	B	Flat	P3	17.72
SCE-16P16GALV	13.00	13.00	B	Flat	P3	24.57
SCE-16P10GALV	14.75	8.88	A	Flat	P3	9.90
SCE-16P14GALV	14.75	12.88	A	Flat	P3	19.95
SCE-20P12GALV	17.00	9.00	B	Flat	P3	23.14
SCE-20P16GALV	17.00	13.00	B	Flat	P3	30.37
SCE-20P20GALV	17.00	17.00	B	Flat	P3	35.44
SCE-24P16GALV	21.00	13.00	C	Four	P3	32.92
SCE-24P20GALV	21.00	17.00	C	Four	P3	45.57
SCE-24P24GALV	21.00	21.00	C	Four	P3	53.18
SCE-30P16GALV	27.00	13.00	C	Four	P3	45.57
SCE-30P20GALV	27.00	17.00	C	Four	P3	55.70
SCE-30P24GALV	27.00	21.00	C	Four	P3	63.29
SCE-30P30GALV	27.00	27.00	C	Four	P3	83.55
SCE-36P16GALV	33.00	13.00	C	Four	P3	53.18
SCE-36P24GALV	33.00	21.00	C	Four	P3	75.96
SCE-36P30GALV	33.00	27.00	C	Four	P3	101.27
SCE-36P36GALV	33.00	33.00	C	Four	P3	118.99
SCE-40P24GALV	37.00	21.00	C	Four	P3	86.08
SCE-42P24GALV	39.00	21.00	C	Four	P3	91.14
SCE-42P30GALV	39.00	27.00	C	Four	P3	116.47
SCE-42P36GALV	39.00	33.00	C	Four	P3	136.72
SCE-42P42GALV	39.00	39.00	C	Four	P3	156.97
SCE-48P48GALV	44.00	44.00	C	Four	P3	212.67
SCE-48P24GALV	45.00	21.00	C	Four	P3	98.74
SCE-48P30GALV	45.00	27.00	C	Four	P3	129.13
SCE-48P36GALV	45.00	33.00	C	Four	P3	154.46
SCE-48P42GALV	45.00	39.00	C	Four	P3	177.24
SCE-60BFP42GALV	56.00	38.00	C	Four	P3	230.41
SCE-60P48GALV	56.00	44.00	C	Four	P3	268.38
SCE-60P60GALV	56.00	56.00	D	Four	P3	443.50
SCE-60P24GALV	57.00	21.00	C	Four	P3	129.13
SCE-60P30GALV	57.00	27.00	C	Four	P3	159.52
SCE-60P36GALV	57.00	33.00	C	Four	P3	189.89
SCE-64P25GALV	60.00	21.75	C	Four	P3	159.52
SCE-64P31GALV	60.00	27.75	C	Four	P3	167.11
SCE-64P37GALV	60.00	33.75	C	Four	P3	182.30
SCE-64P52GALV	60.00	48.00	D	Four	P3	446.02
SCE-64P64GALV	60.00	60.00	D	Four	P3	473.89

GALVANIZED SUB-PANELS

Catalog No.	Height (D)	Width (E)	Configuration	Edge Flanges	Product Code	List Price
SCE-64P76GALV	60.00	72.00	D	Four	P3	537.19
SCE-72P60GALV	68.00	56.00	D	Four	P3	506.82
SCE-72P72GALV	68.00	68.00	D	Four	P3	582.76
SCE-72P30GALV	69.00	27.00	C	Four	P3	210.15
SCE-72P36GALV	69.00	33.00	C	Four	P3	225.33
SCE-76P37GALV	72.00	33.75	C	Four	P3	250.65
SCE-76P76GALV	72.00	72.00	D	Four	P3	610.61
SCE-82P37GALV	78.00	33.75	C	Four	P3	277.91
SCE-82P76GALV	78.00	72.00	D	Four	P3	613.13



GALVANIZED SUB-PANELS

Subpanels are constructed from galvanized steel for direct bonding of electrical components. Size determines steel thickness.

SUB-PANELS

Braced Sub-Panels

Designed to be used when a large number of components or extremely heavy components are to be mounted on a sub-panel. Braces are welded to the back. Made from heavy gauge steel and powder coated white.

Aluminum Sub-Panels For Fiberglass Enclosures

Designed to mount in the back of an enclosure. Made from marine grade aluminum. Can be special ordered in steel and stainless steel.

Filler Plates

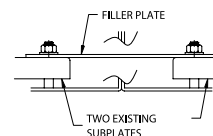
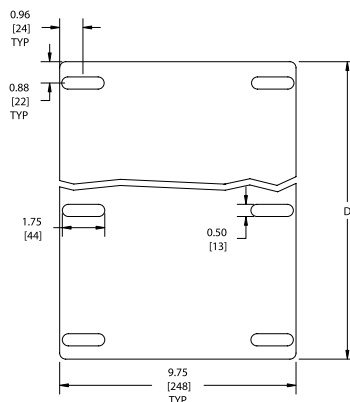
Designed to provide additional mounting surface between sub-panels in a large enclosure or between sub-panels or sections of a modular enclosure. Slotted mounting holes allow flexible installation. Panels are powder coated white.

Catalog No.	Height (A)	Width (B)	Configuration	Edge Flanges	Product Code	List Price
SCE-60P60B	56.00	56.00	C	Four	P3	420.30
SCE-64P64B	60.00	60.00	C	Four	P3	455.73
⚡ SCE-64P76B	60.00	72.00	C	Four	P3	536.76
⚡ SCE-72P60B	68.00	56.00	C	Four	P3	498.78
⚡ SCE-72P72B	68.00	68.00	C	Four	P3	569.68
SCE-76P76B	72.00	72.00	C	Four	P3	627.91
⚡ SCE-82P76B	78.00	72.00	C	Four	P3	632.97

Catalog No.	Height (A)	Width (B)	Edge Flanges	Product Code
SCE-6P4AL	4.88	2.88	Flat	F2
SCE-6P6AL	4.88	4.88	Flat	F2
SCE-8P6AL	6.88	4.88	Flat	F2
SCE-8P8AL	6.88	6.88	Flat	F2
SCE-10P8AL	8.88	6.88	Flat	F2
SCE-12P10AL	10.88	8.88	Flat	F2
SCE-12P12AL	10.88	10.88	Flat	F2
SCE-14P12AL	12.88	10.88	Flat	F2
SCE-14P8AL	12.88	5.88	Flat	F2
SCE-16P10AL	13.00	8.50	Flat	F2
SCE-16P14AL	14.88	12.88	Flat	F2
SCE-18P16AL	16.88	14.88	Flat	F2
SCE-20P16AL	17.00	13.00	Flat	F2
SCE-20PJ16AL	18.88	14.88	Flat	F2
SCE-24P12AL	21.00	9.00	Flat	F2
SCE-24P20AL	21.00	17.00	Formed	F2
SCE-30P20AL	27.00	17.00	Formed	F2
SCE-30P24AL	27.00	21.00	Formed	F2
SCE-36P30AL	33.00	27.00	Formed	F2
SCE-36P36AL	31.00	33.00	Formed	F2
SCE-48P36AL	45.00	33.00	Formed	F2
SCE-60P36AL	57.00	33.00	Formed	F2

Catalog No.	Height (D)	Width	Enclosure Height	Product Code	List Price
SCE-72FP	60.00	9.75	72.00	P3	78.49
SCE-84FP	72.00	9.75	84.00	P3	88.62
SCE-90FP	78.00	9.75	90.00	P3	96.21

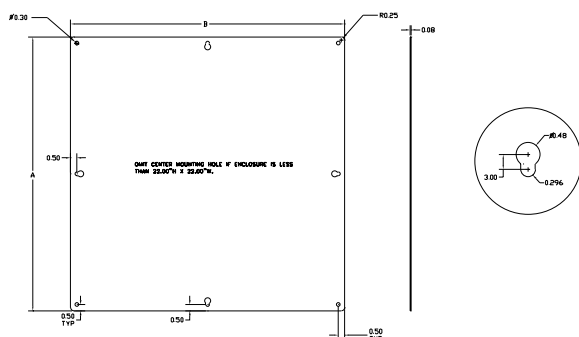
⚡ Available within 10 working days if not in stock



TYPE 1 SUB-PANELS

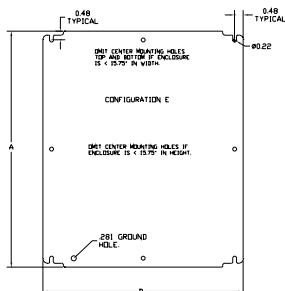
Catalog No.	Height (A)	Width (B)	Product Code	List Price
SCE-6N6MP	4.00	4.00	N1	2.32
SCE-8N6MP	6.00	4.00	N1	2.74
SCE-8N8MP	6.00	6.00	N1	3.21
SCE-10N8MP	8.00	6.00	N1	3.78
SCE-10N10MP	8.00	8.00	N1	4.40
SCE-12N10MP	10.00	8.00	N1	5.12
SCE-12N12MP	10.00	10.00	N1	6.11
SCE-14N12MP	12.00	10.00	N1	6.86
SCE-16N12MP	14.00	10.00	N1	7.71
SCE-16N16MP	14.00	14.00	N1	9.47
SCE-20N16MP	18.00	14.00	N1	11.65
SCE-20N20MP	18.00	18.00	N1	15.83
SCE-24N16MP	22.00	14.00	N1	14.33
SCE-24N20MP	22.00	18.00	N1	17.87
SCE-24N24MP	22.00	22.00	N1	33.63
SCE-30N24MP	28.00	22.00	N1	44.46
SCE-30N30MP	28.00	28.00	N1	55.55
SCE-36N24MP	34.00	22.00	N1	45.70
SCE-36N30MP	34.00	28.00	N1	65.58

NEMA 1 SUBPANEL



Catalog No.	Height (A)	Width (B)	Product Code	List Price
SCE-6P4J	5.00	3.00	P3	3.02
SCE-6P6J	5.00	5.00	P3	3.62
SCE-8P6J	7.00	5.00	P3	4.17
SCE-10P8J	9.00	7.00	P3	5.70
SCE-12P10J	11.00	9.00	P3	7.72
SCE-12P12J	11.00	11.00	P3	9.08
SCE-14P12J	13.00	11.00	P3	10.13
SCE-16P14J	15.00	13.00	P3	19.96
SCE-20P16J	19.00	15.00	P3	30.40
SCE-20P20J	19.00	19.00	P3	35.44

Enclosure Size - 0.75 = Sub-Panel Size



SUB-PANELS

Type 1 Sub-Panels

Designed to be used with Nema 1 enclosures. Made of heavy gauge steel and powder coated white.

Enviroline® Junction Enclosure (ELJ) Sub-Panels

Designed to be used with Enviroline® Junction Enclosures. Made of heavy gauge steel and powder coated white.

SUB-PANELS

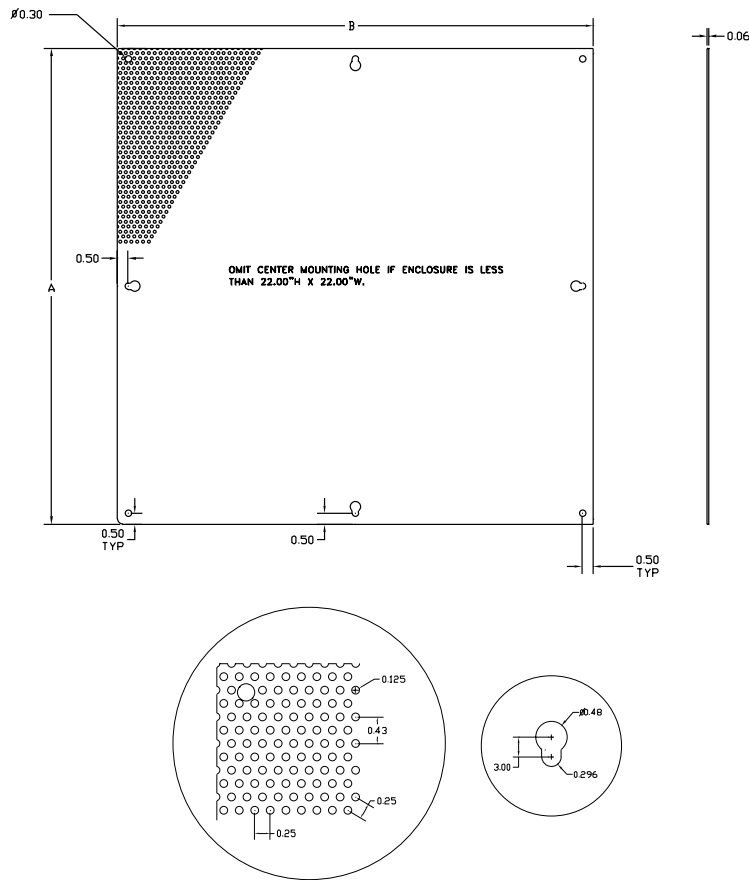
Perforated Sub-Panels

Perforated Subpanels have 0.13 mounting holes with 0.25 staggered patterns for the installation of lightweight control components with #8 self threading screws, for use in small and medium size Type 1 enclosures.

TYPE 1
PERFORATED SUB-PANELS ACCESSORIES

Catalog No.	Height (A)	Width (B)	Product Code	List Price
SCE-6N6MPP	4.00	4.00	N1	2.63
SCE-8N6MPP	6.00	4.00	N1	3.11
SCE-8N8MPP	6.00	6.00	N1	3.64
SCE-10N8MPP	8.00	6.00	N1	4.29
SCE-10N10MPP	8.00	8.00	N1	4.99
SCE-12N10MPP	10.00	8.00	N1	5.81
SCE-12N12MPP	10.00	10.00	N1	6.93
SCE-14N12MPP	12.00	10.00	N1	7.79
SCE-16N12MPP	14.00	10.00	N1	8.75
SCE-16N16MPP	14.00	14.00	N1	10.75
SCE-20N16MPP	18.00	14.00	N1	13.23
SCE-20N20MPP	18.00	18.00	N1	17.97
SCE-24N16MPP	22.00	14.00	N1	17.97
SCE-24N20MPP	22.00	18.00	N1	20.29
SCE-24N24MPP	22.00	22.00	N1	38.17
SCE-30N24MPP	28.00	22.00	N1	50.47
SCE-30N30MPP	28.00	28.00	N1	63.05
SCE-36N24MPP	34.00	22.00	N1	63.05
SCE-36N30MPP	34.00	28.00	N1	74.43

NEMA 1 PERFORATED SUBPANEL



TYPE 1 INTERNAL DISCONNECT ENCLOSURE

Catalog No.	Description	Height	Width	Depth	Minimum Depth of Enclosure	Product Code	List Price
SCE-60AFSD	30 to 60 Non-fusible Disconnects & small Circuit Breakers	13.50	12.00	6.50	10 inches	P2	105.70
SCE-100AFSD	30 to 100 amp Fusible Disconnect & large Circuit Breaker	22.00	12.00	6.50	10 inches	P2	115.70
SCE-400AFSD	200 to 600 amp Fusible & Non-Fusible Disconnects	32.00	15.00	9.75	16 inches	P2	128.86



INTERNAL DISCONNECT ENCLOSURE

Application -

Designed for use with enclosures that require additional protection against Arc Flash. This enclosure can be used within an environmentally rated enclosure to isolate the main power supply. Increasing personal protection by preventing incidental contact or exposure to the high voltage arc flash and shock hazard, and potentially reducing the PPE level for the lower risk components when the Internal Disconnect Enclosure cover is closed. The Internal Disconnect Enclosure can be easily incorporated into a new system or added to a pre-existing system on variable depth or cable operated disconnects. Aids in achieving compliance with NFPA 70E by concealing main power supply. For installation information, consult our Installation manual at www.saginawcontrol.com.

Construction -

- 0.060 Carbon Steel
- Enclosures are symmetrical for use with left or right hand disconnects.
- Removable continuous hinges.
- 110 degree door stop prevents incidental contact with other components.
- Black quarter turn latch.
- Black spring loaded quarter turn latch with 7mm square insert and key.
- Latches automatically when door is closed.
- Gland plate top and bottom provides easy installation of wires.
- Mounting holes provided in back for securing to the sub-panel.
- Ground stud on door and body.

Finish -

Orange Texture powder coated inside and out.

Industry Standards -

Nema Type 1
UL cUL Listed Type 1
CSA Approved Type 1

ACCESSORIES

Hinged Window Kits

Designed to mount on the exterior of an enclosure to provide protection for controls with easy access. Concealed hinges. Black mini quarter turn latches. Polycarbonate viewing window. Gasket and hardware included. Made from 0.075" carbon steel and powder coated ANSI-61 gray. "SS" parts are made from 0.075" stainless steel Type 304 with #4 brushed finish.

Window Kits

Designed for use on most SCE Type 4, 4X and 12 enclosures. Consists of frame, window, oil-resistant gasketing and mounting hardware. Installed by making a cutout in the enclosure and fastening the window and frame in place. For technical information, consult our Installation Manual at www.saginawcontrol.com. The window is .25" polycarbonate material. Made from heavy gauge steel and powder coated ANSI-61 gray. "SS" kits are made of Type 304 stainless with #4 brushed finish.

Catalog No.	Height (A)	Width (B)	Depth (C)	Viewing Area Height	Viewing Area Width	Type	Product Code	List Price
SCE-HWK1212	12.00	12.00	2.58	7.25	6.50	4	P6	310.45
SCE-HWK1814	18.00	14.00	2.58	13.25	8.50	4	P6	360.12
SCE-HWK2218	22.00	18.00	2.58	17.25	12.50	12	P6	434.63
SCE-HWK2228	22.00	28.00	2.58	17.25	22.50	12	P6	496.72
SCE-HWK2822	28.00	22.00	2.58	23.25	16.50	12	P6	496.72
Stainless Steel								
SCE-HWK1212SS	12.00	12.00	2.58	7.25	6.50	4X	P6	640.77
SCE-HWK1814SS	18.00	14.00	2.58	13.25	8.50	4X	P6	869.25
SCE-HWK2218SS	22.00	18.00	2.58	17.25	12.50	12	P6	1048.07
SCE-HWK2228SS	22.00	28.00	2.58	17.25	22.50	12	P6	1296.42
SCE-HWK2822SS	28.00	22.00	2.58	23.25	16.50	12	P6	1296.42

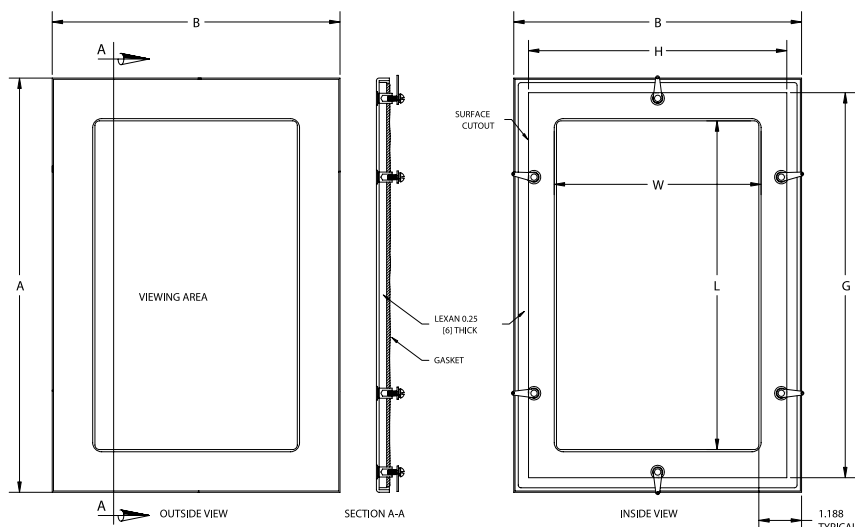


Type 4 & 4X

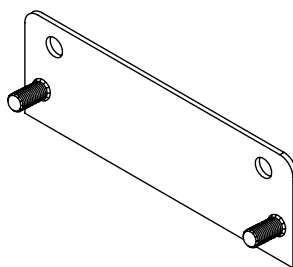
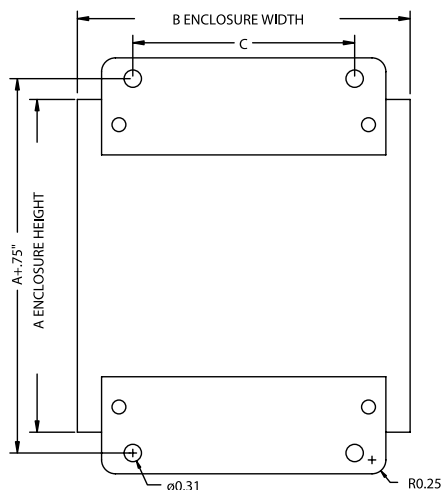


Type 12

Catalog No.	Viewing Area (L)	Viewing Area (W)	Cut-Out Size (G)	Cut-Out Size (H)	Height (A)	Width (B)	Product Code	List Price
SCE-PWK53NF	5.25	3.25	6.69	4.69	7.50	5.50	P2	99.34
SCE-PWK63NF	6.55	2.85	7.85	4.16	8.80	5.10	P2	109.28
SCE-PWK95NF	9.25	5.75	10.69	7.19	11.50	8.00	P2	119.22
SCE-PWK138NF	13.25	8.25	14.69	9.69	15.50	10.50	P2	151.50
SCE-PWK1711NF	17.25	11.25	18.69	12.69	19.50	13.50	P2	208.62
SCE-PWK2315NF	23.25	15.25	24.69	16.69	25.50	17.50	P2	257.05
SCE-PWK2919NF	29.25	19.25	30.69	20.69	31.50	21.50	P2	382.47
SCE-PWK53NFSS	5.25	3.25	6.69	4.69	7.50	5.50	P2	149.01
SCE-PWK95NFSS	9.25	5.75	10.69	7.19	11.50	8.00	P2	180.06
SCE-PWK138NFSS	13.25	8.25	14.69	9.69	15.50	10.50	P2	228.49
SCE-PWK1711NFSS	17.25	11.25	18.69	12.69	19.50	13.50	P2	300.51
SCE-PWK2315NFSS	23.25	15.25	24.69	16.69	25.50	17.50	P2	388.68
SCE-PWK2919NFSS	29.25	19.25	30.69	20.69	31.50	21.50	P2	576.19



Catalog No.	Description	Product Code	List Price
SCE-NMST6	6 Inch Wide NEMA 1 Enclosure	P2	15.98
SCE-NMST8	8 Inch Wide NEMA 1 Enclosure	P2	17.04
SCE-NMST10	10 Inch Wide NEMA 1 Enclosure	P2	18.10
SCE-NMST12	12 Inch Wide NEMA 1 Enclosure	P2	19.17
SCE-NMST16	16 Inch Wide NEMA 1 Enclosure	P2	21.30
SCE-NMST20	20 Inch Wide NEMA 1 Enclosure	P2	23.42
SCE-NMST24	24 Inch Wide NEMA 1 Enclosure	P2	25.56

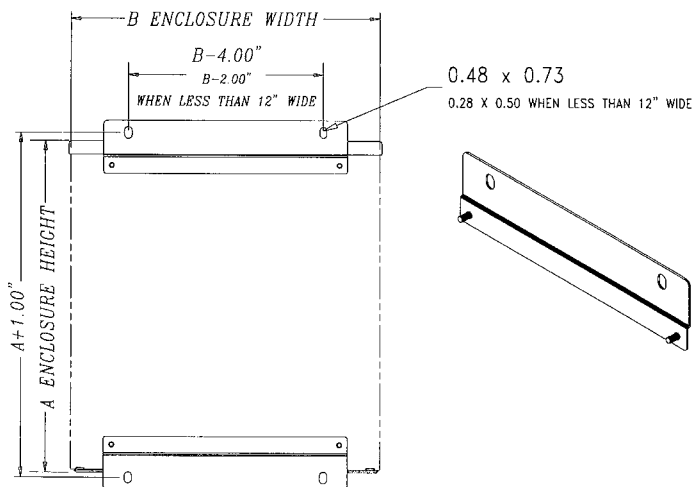


ACCESSORIES

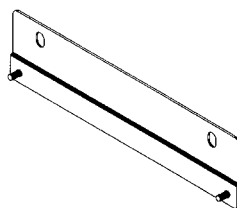
Type 1 Mounting Straps

Designed to install on wall mount type 1 enclosures. Two mounting straps per kit. Made of 0.075" thick carbon steel and powdercoated ANSI-61 gray. Hardware is included to fasten mounting strap kit to the enclosure.

Catalog No.	Description	Product Code	List Price
SCE-MST4	4 Inch Wide 3R Enclosure	P2	17.04
SCE-MST6	6 Inch Wide 3R Enclosure	P2	18.10
SCE-MST8	8 Inch Wide 3R Enclosure	P2	19.17
SCE-MST10	10 Inch Wide 3R Enclosure	P2	20.24
SCE-MST12	12 Inch Wide 3R Enclosure	P2	21.30
SCE-MST16	16 Inch Wide 3R Enclosure	P2	23.42
SCE-MST20	20 Inch Wide 3R Enclosure	P2	25.56
SCE-MST24	24 Inch Wide 3R Enclosure	P2	27.69



0.48 x 0.73
0.28 x 0.50 WHEN LESS THAN 12" WIDE



Type 3R Mounting Straps

Designed to install on wall mount Type 3R enclosures. Two mounting straps per kit and made of 0.075-inch thick carbon steel and powdercoated ANSI-61 gray. Hardware is included to fasten mounting strap kit to the enclosure.

ACCESSORIES

Grounding Straps

Grounding straps can be used to provide electrical continuity between metal parts which must be electrically connected. Consists of braided copper with a ring terminal at both ends. Braid is insulated with green and yellow striped plastic.

Grounding Bars

Designed to provide a grounding area for controls and equipment. Has ten 10-32 tapped conductor holes and two mounting holes. Made from copper.

Type 4 & 4X Enviroline® Window Doors

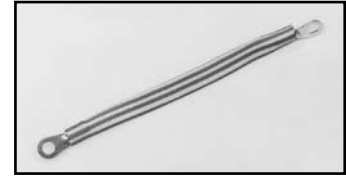
Designed for use with standard Type 4, 4X and 12 Enviroline® enclosures where gauges or equipment may need to be frequently checked without opening the door. Made of heavy gauge steel with 0.25" polycarbonate window, and ANSI 61 gray powder coated finish. SS kits are made of Type 304 stainless with #4 brushed finish.

Swing Out Panel Kits For Type 4 & 12 Enclosures

Swing out panel kits consist of heavy gauge brackets and hinges. Installed by drilling small hole in the side of the enclosure and bolting the bracket in place. Sealing washers are provided to insure that the enclosure will meet original standards after installation. For use in any Type 4 & 12 LP style wall mount enclosure where A x B dimensions are 12" x 12" or larger.

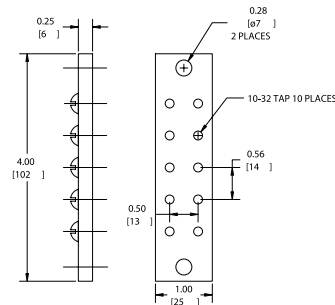
Catalog No.	Approx. Wire Size (AWG)	Length Between Ring Terminals (CTOC)	Ring Terminal Hole Size	Product Code	List Price
-------------	-------------------------	--------------------------------------	-------------------------	--------------	------------

SCE-GS808	#8	8.00	0.330	P2	17.38
-----------	----	------	-------	----	-------



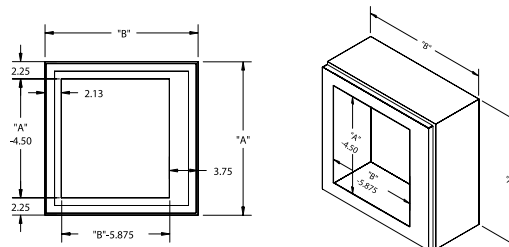
Catalog No.	Height (A)	Width (B)	Depth (C)	Product Code	List Price
-------------	------------	-----------	-----------	--------------	------------

SCE-GB10	1.00	4.00	0.25	P2	86.93
----------	------	------	------	----	-------



Catalog No.	Height (A)	Width (B)	Product Code	List Price
-------------	------------	-----------	--------------	------------

SCE-WD12EL12	12.00	12.00	P2	85.20
SCE-WD16EL12	16.00	12.00	P2	95.85
SCE-WD16EL16	16.00	16.00	P2	106.50
SCE-WD20EL16	20.00	16.00	P2	117.15
SCE-WD20EL20	20.00	20.00	P2	138.45
SCE-WDSS12EL12	12.00	12.00	P2	140.58
SCE-WDSS16EL12	16.00	12.00	P2	159.75
SCE-WDSS16EL16	16.00	16.00	P2	176.79
SCE-WDSS20EL16	20.00	16.00	P2	193.83
SCE-WDSS20EL20	20.00	20.00	P2	230.04



Catalog No.	Description	Product Code	List Price
-------------	-------------	--------------	------------

SCE-NADFK	Swing Panel Kit (used with panels 30 inches and under)	P2	44.71
SCE-NADFK-3	Swing Panel Kit (used with panels over 30 inches)	P2	55.89



Phone (989) 799-6871
Fax (989) 799-4524



Catalog No.	Enclosure Height	Product Code	List Price
SCE-ELSP12	12	P2	34.77
SCE-ELSP14	14	P2	37.25
SCE-ELSP16	16	P2	39.74
SCE-ELSP20	20	P2	42.22
SCE-ELSP24	24	P2	44.71
SCE-ELSP30	30	P2	47.19
SCE-ELSP36	36	P2	52.15
SCE-ELSP40	40	P2	54.63
SCE-ELSP42	42	P2	57.13
SCE-ELSP48	48	P2	62.09
SCE-ELSP60	60	P2	67.05



Catalog No.	Notes	Product Code	List Price
SCE-FSPS4	Set of 4	P2	55.88
SCE-FSPS6	Set of 6	P2	84.44
SCE-FSPS8	Set of 8	P2	126.66



Catalog No.	Enclosure Dimension Parallel to Straps	Length (G)	Usable Space	Product Code	List Price
-------------	--	------------	--------------	--------------	------------

Terminal Straps

SCE-8JS	8	5.75	4.62	P2	6.21
SCE-10JS	10	7.75	6.62	P2	6.45
SCE-12JS	12	9.75	8.62	P2	6.95
SCE-14JS	14	11.70	10.62	P2	7.46
SCE-16JS	16	13.70	12.62	P2	7.70

Catalog No.	Enclosure Dimension Parallel to Brackets	Length (H)	Product Code	List Price
-------------	--	------------	--------------	------------

Bracket Assemblies

SCE-6JTMA	6	5.00	P2	12.42
SCE-8JTMA	8	7.00	P2	12.92
SCE-10JTMA	10	9.00	P2	13.66
SCE-10JTMAXK	10	9.00	P2	13.91
SCE-12JTMA	12	11.00	P2	14.15
SCE-14JTMA	14	13.00	P2	14.78



Phone (989) 799-6871
Fax (989) 799-4524

ACCESSORIES

Swing Out Panel Kits For Enviroline®, Wallmount, 3R Hinged Enclosures

Designed to allow a standard sub-panel to be installed in the front of an enclosure and to swing out of the enclosure. Kit consists of heavy gauge brackets, hinges, and mounting hardware. Installed by detaching door hinge from enclosure and installing swing out panel kit to the existing holes and hinge supplied with the enclosure. Made from steel and powder coated white.

Individual Panel Supports

Individual Panel Supports are available for mounting sub-panels. Packaged in sets with all mounting hardware included. Made of heavy duty gauge steel and plated.

Terminal Kit Assemblies For "CH" Type Enclosures

Designed for junction boxes and Type 4 and 12 enclosures. Brackets are made to mount to mounting studs in the enclosure. Terminal straps can be positioned anywhere on the brackets. Brackets and terminal straps must be ordered separately. Made of heavy gauge steel and powder coated white.

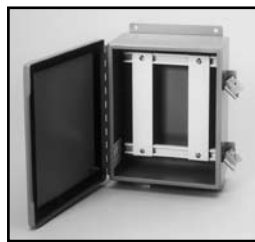
ACCESSORIES

Terminal Kit Assemblies For "LP" Type Enclosures

Designed for most single and two door Type 12 enclosures. Brackets are made to mount to mounting studs in the enclosure. Terminal straps can be positioned anywhere on the brackets. Brackets and terminal straps must be ordered separately. Made of heavy gauge steel and powder coated white.

Catalog No.	Enclosure Dimension Parallel to Straps	Length (G)	Usable Space	Product Code	List Price
Terminal Straps					
SCE-16T	16.00	13.00	11.75	P2	11.17
SCE-20T	20.00	17.00	15.75	P2	12.42
SCE-24T	24.00	21.00	19.75	P2	14.90
SCE-30T	30.00	27.00	25.75	P2	17.38
SCE-36T	36.00	33.00	31.75	P2	19.87
SCE-42T	42.00	39.00	37.75	P2	22.35
SCE-48T	48.00	45.00	43.75	P2	26.08
SCE-60T	60.00	57.00	55.75	P2	31.04

Catalog No.	Enclosure Dimension Parallel to Brackets	Length (H)	No. of Brackets	Product Code	List Price
Bracket Assemblies					
SCE-12NTMA2	12.00	8.50	2	P2	29.80
SCE-16NTMA2	16.00	12.50	2	P2	32.29
SCE-20NTMA2	20.00	16.50	2	P2	33.53
SCE-24NTMA2	24.00	20.50	2	P2	40.98
SCE-24NTMA3	24.00	20.50	3	P2	49.67
SCE-30NTMA2	30.00	26.50	2	P2	43.46
SCE-30NTMA3	30.00	26.50	3	P2	57.13
SCE-36NTMA2	36.00	32.50	2	P2	47.19
SCE-36NTMA3	36.00	32.50	3	P2	64.57



Terminal Straps



Bracket Assemblies

Breather & Drain Vents

Add Vents or drain breather and maintain Type 4X seal against dust, dirt, oil and water. Vents and drain breather are made of corrosion and UV resistant fiberglass, and supplied with gasket. UL recognized 3, 4, 4X & 12

Catalog No.	Height (A)	Width (B)	Depth (C)	Product Code
SCE-BV4XKIT	2.76	1.97	1.00	F1
SCE-DV4XKIT	2.76	1.97	0.69	F1



Breather Vents

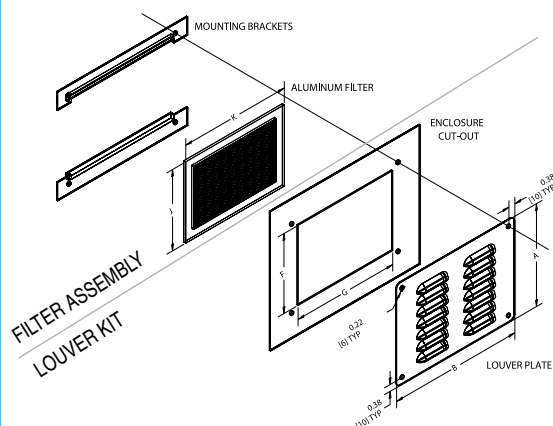


Drain Vents

Phone (989) 799-6871
Fax (989) 799-4524



Catalog No.	Height (A)	Width (B)	Cutout Size (F)	Cutout Size (G)	Product Code	List Price
SCE-AVK23	3.25	3.25	2.00	1.75	P2	16.64
SCE-AVK33	3.88	4.50	2.62	3.00	P2	17.38
SCE-AVK34	4.75	4.50	3.50	3.00	P2	18.38
SCE-AVK43	4.50	5.50	3.25	4.00	P2	18.87
SCE-AVK44	5.62	5.50	4.38	4.00	P2	19.87
SCE-AVK64	5.62	7.50	4.38	6.00	P2	21.85
SCE-AVK66	7.88	7.50	6.62	6.00	P2	22.60
SCE-AVK812	15.31	9.50	14.06	8.00	P2	34.77
SCE-AVK84	5.81	9.50	4.56	8.00	P2	23.34
SCE-AVK86	8.19	9.50	6.94	8.00	P2	26.33
SCE-AVK88	10.56	9.50	9.31	8.00	P2	29.31
SCE-AVK23SS	3.25	3.25	2.00	1.75	P2	41.60
SCE-AVK33SS	3.88	4.50	2.62	3.00	P2	43.46
SCE-AVK34SS	4.75	4.50	3.50	3.00	P2	45.94
SCE-AVK43SS	4.50	5.50	3.25	4.00	P2	47.19
SCE-AVK44SS	5.62	5.50	4.38	4.00	P2	49.67
SCE-AVK64SS	5.62	7.50	4.38	6.00	P2	54.63
SCE-AVK66SS	7.88	7.50	6.62	6.00	P2	55.88
SCE-AVK812SS	15.31	9.50	14.06	8.00	P2	86.93
SCE-AVK84SS	5.81	9.50	4.56	8.00	P2	57.13
SCE-AVK86SS	8.19	9.50	6.94	8.00	P2	58.36
SCE-AVK88SS	10.56	9.50	9.31	8.00	P2	65.82



Catalog No.	Filter Size (J)	Filter Size (K)	Product Code	List Price
SCE-FLT33	3.22	3.25	P2	22.35
SCE-FLT34	4.09	3.25	P2	22.35
SCE-FLT43	3.84	4.25	P2	22.35
SCE-FLT44	4.97	4.25	P2	22.35
SCE-FLT64	4.45	6.25	P2	24.84
SCE-FLT66	6.72	6.25	P2	24.84
SCE-FLT84	4.64	8.25	P2	27.32
SCE-FLT86	7.02	8.25	P2	27.32
SCE-FLT88	9.39	8.25	P2	27.32
SCE-FLT812	14.14	8.25	P2	29.80

ACCESSORIES

Louver Kit

Designed for ventilation in enclosures where excessive heat or moisture is a problem. Kits may be installed in the field by making a cutout of the proper size. Louver plates are made of heavy gauge steel and powder coated ANSI-61 gray. SS parts are made of Type 304 stainless with #4 brushed finish.

Filter Assembly

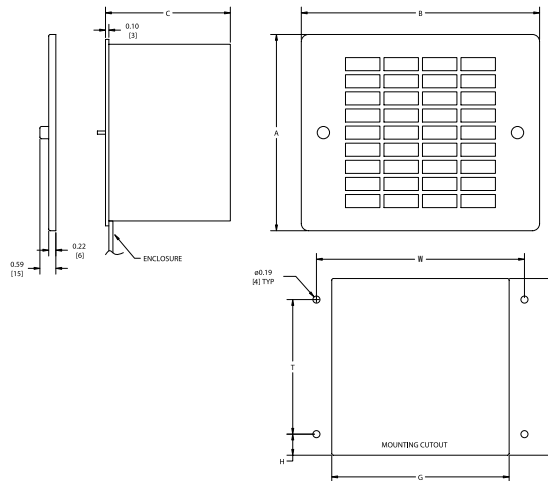
Designed for use with louver kit. Aluminum filter brackets with mounting holes to align with louver mounting holes and a washable aluminum air filter to provide good air filtration.

ACCESSORIES

Fan Package

Designed for use in enclosures that require cooling but have limited space. Consists of a washable aluminum filter, steel air plenum, removable stainless steel grille, and single phase fan. Grille has captivated thumbnuts for easy access to the filter from the outside. Fans are available in 115 or 230 volt AC, 60/50 Hertz (HZ) single phase. Air plenum is ANSI-61 gray powder coated.

Catalog No.	Height (A)	Width (B)	Depth (C)	Cutout Size (F)	Cutout Size (G)	Mounting Dimensions (H)	Mounting Dimensions (T)	CFM	Mounting Dimensions (W)	Product Code	List Price
SCE-FA44	6.11	7.38	3.28	5.66	5.66	0.77	4.12	115	6.38	P2	146.53
SCE-FA66	7.61	8.88	3.75	7.16	7.16	1.33	4.50	238	7.88	P2	260.78
SCE-FA1010	11.62	13.00	5.25	11.16	11.16	2.14	6.88	665	11.88	P2	347.70
SCE-FA44-230	6.11	7.38	3.28	5.66	5.66	0.77	4.12	115	6.38	P2	161.18
SCE-FA66-230	7.61	8.88	3.75	7.16	7.16	1.33	4.50	238	7.88	P2	286.85
SCE-FA1010-230	11.62	13.00	5.25	11.16	11.16	2.14	6.88	665	11.88	P2	382.46



Filter and Grille Package

Designed for use on air discharge side of cooling fan package. Stainless steel grille with captivated thumb screws. Aluminum mounting brackets and aluminum filter. Mounting hardware is furnished.

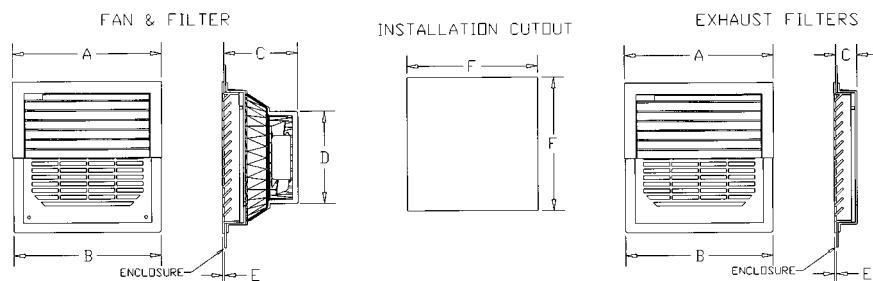
Catalog No.	Height (A)	Width (B)	Cutout Size (F)	Cutout Size (G)	Mounting Dimensions (H)	Mounting Dimensions (T)	Mounting Dimensions (W)	Product Code	List Price
SCE-FGA44	6.11	7.38	5.66	5.66	0.77	4.12	6.38	P2	67.05
SCE-FGA66	7.61	8.88	7.16	7.16	1.33	4.50	7.88	P2	69.54
SCE-FGA1010	11.62	13.00	11.16	11.16	2.14	6.88	11.88	P2	91.89

Replacement Filter

Designed for use with SCE Fan Packages and Filter and Grille Package. Aluminum washable filters provide good air filtration.

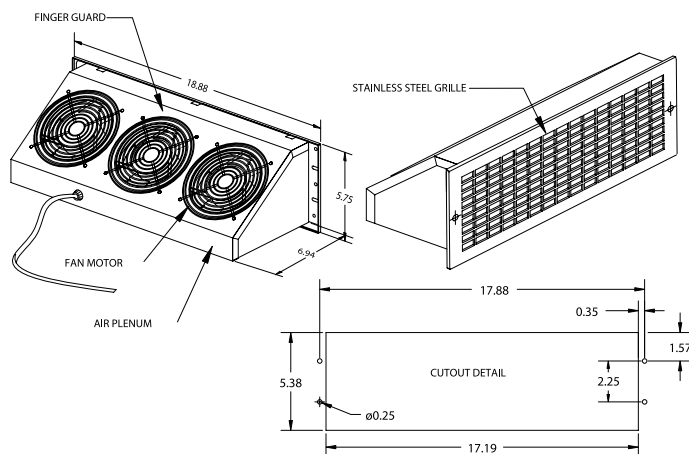
Catalog No.	Fits Fan Package No.	Fits Filter Assembly No.	Product Code	List Price
SCE-RF44	SCE-FA44	SCE-FGA44	P2	8.07
SCE-RF66	SCE-FA66	SCE-FGA66	P2	9.32
SCE-RF1010	SCE-FA1010	SCE-FGA1010	P2	17.38
SCE-RF517	SCE-BP115	SCE-FGA517	P2	12.78
	SCE-BP230			

Catalog No.	Height (A)	Width (B)	Depth (C)	CFM 50/60 Hz	Product Code	Cutout Size (F)	List Price.
SCE-N12FA44	5.91	5.91	2.83	28	P2	5.03 Sq.	163.85
SCE-N12FA66	9.84	9.84	4.76	142	P2	8.91 Sq.	310.33
SCE-N12FA1010	12.80	12.80	6.18	249	P2	11.57 Sq.	358.08



Catalog No.	Height (A)	Width (B)	Depth (C)	Product Code	Cutout Size (F)	List Price
SCE-N12FGA44	5.91	5.91	1.22	P2	5.03 Sq.	39.06
SCE-N12FGA66	9.84	9.84	1.42	P2	8.91 Sq.	46.67
SCE-N12FGA1010	12.80	12.80	1.42	P2	11.57 Sq.	54.26

Catalog No.	Height (A)	Width (B)	Depth (C)	CFM	Product Code	List Price
SCE-BP115	5.75	18.88	6.95	324	P2	484.30
SCE-BP230	5.75	18.88	6.95	324	P2	484.30



Catalog No.	Height (A)	Width (B)	Depth (C)	Product Code	List Price
SCE-FGABP	5.75	18.88	1.00	P2	105.68

ACCESSORIES

TYPE 12 Fans & Filters

Easy to install snap fit design for use in enclosures that require cooling but have limited space in Type 1 & 12 applications. Housing and grill are made of black heat resistant (ABS-FR), self-extinguishing material. Fans are 115 volt AC, 60/50 Hertz (HZ) single phase.

UL Recognized Type 12

TYPE 12 Exhaust Filters

Easy to install snap fit design for use on air discharge side of cooling fan package for Type 1 & 12 applications. Housing and grill are made of black heat resistant (ABS-FR), self-extinguishing material.

UL Recognized Type 12

Blower Package

Designed for use in enclosures that require cooling but have limited space. Consists of a washable aluminum air filter, steel air plenum, removable stainless steel grille. Grille has captivated thumbnails for easy access to the filter from the outside. Fan is 115 or 230 volt AC 60/50 Hertz (HZ). The 125 degree angled design provides greater air movement within the enclosure. Air plenum is ANSI 61 gray powder coated.

Blower Package (Filter and Grille)

Designed for use with SCE Fan Packages and Filter and Grille Package. Aluminum washable filters provide good air filtration.

ACCESSORIES

Enclosure Cooling Packages

SCE can supply cooling components for your electrical enclosure. They can be shipped separately or installed on custom enclosures. McLean Midwest Air Conditioners or Heat Exchangers along with the SCE fan packages can handle all your cooling requirements. Air Conditioner packages include thermostat control and EMI/RFI noise suppressors. For installation of your cooling packages and lead times, please consult an SCE sales representative.

***Note:** Normal discount rates may not apply. Consult your local sales representative.

SIDE MOUNT UNITS

Catalog No.	Height (A)	Width (B)	Depth (C)	Air Intake	Air Outlet	Spec. BTU	Spec. Hz	Spec. Volt	Product Code
M13-0116-G1014	13.25	14.25	7.80	Front	Bottom	800/1000	50/60	115	P1
M13-0126-G1008	13.25	14.25	7.80	Front	Bottom	800/1000	50/60	230	P1
M17-0216-G009	17.65	12.00	8.68	Front	Left Side	1500/1800	50/60	115	P1
M17-0226-G004	17.65	12.00	8.68	Front	Left Side	1500/1800	50/60	230	P1
M28-0216-G013	28.50	17.00	11.33	Front	Top	2200/2200	50/60	115	P1
M28-0226-G004	28.50	17.00	11.33	Front	Top	2200/2200	50/60	230	P1
M28-0416-G007	28.50	17.00	11.33	Front	Top	3800/4000	50/60	115	P1
M28-0426-G032	28.50	17.00	11.33	Front	Top	3800/4000	50/60	230	P1
M33-0416-G010	34.37	12.00	9.88	Front	Top	3700/4000	50/60	115	P1
M33-0426-G009	34.37	12.00	9.88	Front	Top	3700/4000	50/60	230	P1
M36-0616-307	37.69	15.00	11.33	Front	Top	5000/6000	50/60	115	P1
M36-0626-306	37.69	15.00	11.33	Front	Top	5000/6000	50/60	230	P1
M52-0816-032	52.63	17.13	11.33	Front	Top	6700/8000	50/60	115	P1
M52-0826-015	52.63	17.13	11.33	Front	Top	6700/8000	50/60	230	P1
M52-1216-017	52.63	17.13	11.33	Front	Top	10000/12000	50/60	115	P1
M52-1226-034	52.63	17.13	11.33	Front	Top	10000/12000	50/60	230	P1
CR29-0216-G002	29.50	15.75	8.63	Right Side	Bottom	1700/2200	50/60	115	P1
CR29-0226-G002	29.50	15.75	8.63	Right Side	Bottom	1900/2700	50/60	230	P1
CR29-0416-G002	29.50	15.75	8.63	Right Side	Bottom	2400/4000	50/60	115	P1
CR29-0426-G002	29.50	15.75	8.63	Right Side	Bottom	2400/4000	50/60	230	P1
CR43-0616-002	43.31	15.75	10.25	Right Side	Bottom	5100/6000	60	115	P1
CR43-0626-002	43.31	15.75	10.25	Right Side	Bottom	5100/6000	60	230	P1
CR43-0816-002	43.31	15.75	10.25	Right Side	Bottom	7500/8500	60	115	P1
CR43-0826-002	43.31	15.75	10.25	Right Side	Bottom	7500/8500	50	230	P1

Note: "CR" air conditioners will have different capacity ratings and lower operating temperatures. Consult a sales agent for additional information.

TOP MOUNT UNITS

Catalog No.	Height (A)	Width (B)	Depth (C)	Air Intake	Air Outlet	Spec. BTU	Spec. Hz	Spec. Volt	Product Code
MHB11-0216-G306	10.25	17.00	21.08	Front	Top	2200/2200	50/60	115	P1
MHB11-0416-G307	10.25	17.00	21.08	Front	Top	3300/4000	50/60	115	P1

HEAT EXCHANGERS

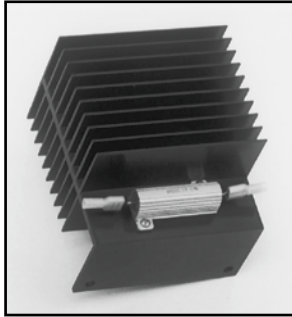
Catalog No.	Height (A)	Width (B)	Depth (C)	Air Intake	Air Outlet	Spec. Hz	Spec. Volt	Product Code
XR20-0416-012	20.00	7.50	3.00	Front	Front	50/60	115	P1
XR29-0816-012	29.50	10.00	3.13	Front	Front	50/60	115	P1

Phone (989) 799-6871

Fax (989) 799-4524



Catalog No.	Description	AMP	WATTS	Product Code	List Price
SCE-AHC15	Heater	.125 MA	15	P2	108.03
SCE-AHC30	Heater	.250 MA	30	P2	108.03
SCE-AHC50	Heater	.416 MA	50	P2	108.03

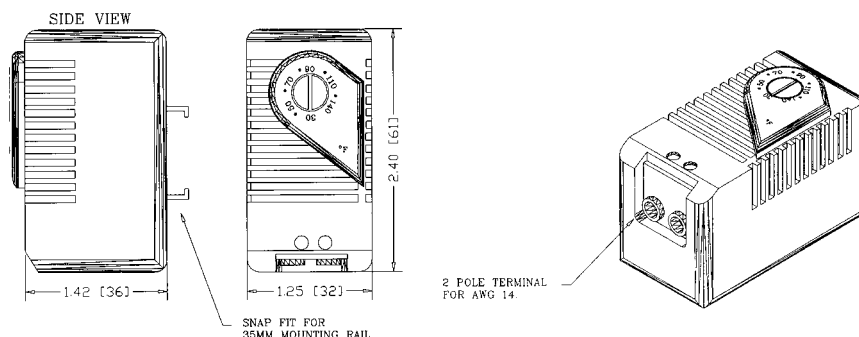


Catalog No.	Watt @ 60 Hz	Volt	Height	Width	Depth	Product Code
SCE-HF1251A	125	115	5.50	4.00	4.50	P1
SCE-HF1252A	125	230	5.50	4.00	4.50	P1
SCE-HF2001A	200	115	5.50	4.00	4.50	P1
SCE-HF2002A	200	230	5.50	4.00	4.50	P1
SCE-HF4001B	400	115	7.50	4.00	4.50	P1
SCE-HF4002B	400	230	7.50	4.00	4.50	P1
SCE-HF8001B	800	115	7.50	4.00	4.50	P1
SCE-HF8002B	800	230	7.50	4.00	4.50	P1



- Brushed Aluminum Housing
- Thermostat Range 0 to 100F (-18 to 38C)
- Heat discharge at the top of the heater
- Panel Mount
- Air volume of 16 CFM on 125 & 200 Watt heaters, 26 CFM on 400 & 800 Watt heaters
- Heat indicator light
- Switch for Auto or Fan
- UL Recognized
- CSA Approved
- CE

Catalog No.	Used With	Height (A)	Width (B)	Depth (C)	Contact	Product Code	List Price
SCE-TEMNC	Heater	2.40	1.26	1.42	NC	P2	32.55
SCE-TEMNO	Fan	2.40	1.26	1.42	NO	P2	32.55



ACCESSORIES

Anti-Condensation Heater

Helps prevent condensation thus preventing corrosion and keeping electrical equipment on line. "AHC" Touch Safe Series Anti-Condensation Space heater designed to keep the temperature inside of an enclosure several degrees above the external ambient temperature and above the dewpoint. There are no moving parts, no thermostat to set or malfunction, and no adjustments are needed for ambient temperature changes. Easy to install, with two wires to connect and two mounting screws. Made of extruded black anodized aluminum. Operating temperatures 30°C to 60°C, 120VAC. When possible, two smaller units are more efficient than one larger unit. For technical information consult our Installation Manual at www.saginawcontrol.com.

Fan Heater with Thermostat

Designed to protect electrical controls, instruments and sensitive components from low temperatures and the effects of condensation and corrosion by maintaining a stable temperature within the electrical enclosure. These heaters are not intended for use in hazardous, wet, dusty or dirty locations. For installation information, consult our Installation Manual at www.saginawcontrol.com.

Thermostat

Designed to regulate air temperature in enclosures that operate with heaters or fans. This mechanical bi-metallic thermostat has a set point range of 30 to 140 degrees F and is easily installed on 35mm mounting rail. (NC) Contact normally closed, or (NO) Contact normally open, switch capacity 10 amp 120-250 VAC Resistive load and 1 amp 120-250V AC Inductive load, 1.25 amp 24V DC.

ACCESSORIES

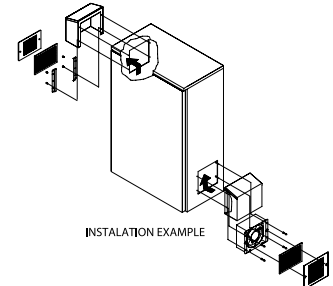
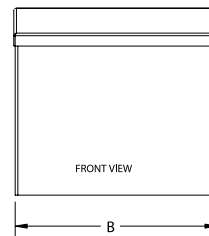
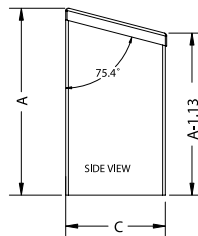
Rain Hood

Designed for use with standard fan and filter kits to prevent rain, sleet, snow, dropping water or fluids from being drawn into the enclosure. Made of 0.063" thick carbon steel and powder coated ANSI-61 gray. SS kits are made of Type 304 stainless with #4 brushed finish. UL Recognized.

Note: Fan and Filter Kit are sold separately.

UL Recognized Type 3R

Catalog No.	Height (A)	Width (B)	Depth (C)	Product Code	List Price
SCE-RH44	8.09	7.62	4.50	P2	31.95
SCE-RH66	8.46	9.12	4.50	P2	34.08
SCE-RH1010	12.34	13.12	4.50	P2	38.34
SCE-RH44SS	8.09	7.62	4.50	P2	55.91
SCE-RH66SS	8.46	9.12	4.50	P2	59.64
SCE-RH1010SS	12.34	13.12	4.50	P2	67.10



Cooling Fans

Designed for use in enclosures where space is limited and reliable cooling is required. 115 or 230 volt AC 60/50hz. Single phase motor. A finger guard is included.

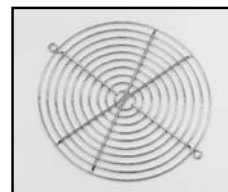
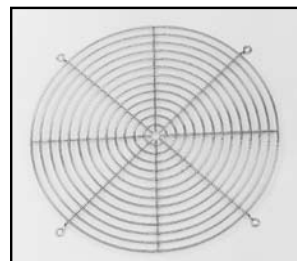
Catalog No.	Air Flow CU Feet Per Min.	Diameter	Fan Dim. Square	Depth	Product Code	List Price
SCE-CF4	108		4.69	1.52	P2	60.84
SCE-CF6	235	6.72		2.00	P2	153.98
SCE-CF10	550	10.00		3.50	P2	161.43
SCE-CF4-230	108		4.69	1.52	P2	66.95
SCE-CF6-230	235	6.72		2.00	P2	170.55
SCE-CF10-230	550	10.00		3.50	P2	177.58



Finger Guards

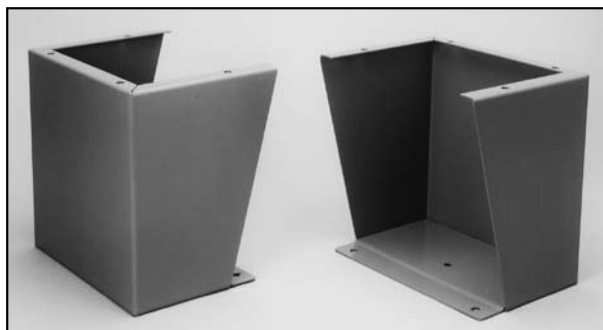
A finger guard is included with each cooling fan. An additional finger guard can be mounted on either of the fans for maximum safety. Chrome plated.

Catalog No.	Use on Cooling Fan Cat. No.	Product Code	List Price
SCE-GARD4	SCE-CF4	P2	17.38
SCE-GARD6	SCE-CF6	P 2	21.11
SCE-GARD10	SCE-CF10	P2	26.08



Catalog No.	Height (A)	Width (B)	Product Code	List Price
SCE-FK0608	6.00	8.00	P2	111.76
SCE-FK0610	6.00	10.00	P2	116.72
SCE-FK0612	6.00	12.00	P2	131.63
SCE-FK0618	6.00	18.00	P2	153.98
SCE-FK0624	6.00	24.00	P2	178.81
SCE-FK1208	12.00	8.00	P2	139.08
SCE-FK1210	12.00	10.00	P2	146.53
SCE-FK1212	12.00	12.00	P2	153.98
SCE-FK1216	12.00	16.00	P2	178.81
SCE-FK1218	12.00	18.00	P2	186.27
SCE-FK1220	12.00	20.00	P2	196.20
SCE-FK1224	12.00	24.00	P2	201.17
SCE-FK1512	15.00	12.00	P2	178.81
SCE-FK1516	15.00	16.00	P2	186.27
SCE-FK1518	15.00	18.00	P2	185.10
SCE-FK1524	15.00	24.00	P2	221.04
SCE-FK1808	18.00	8.00	P2	168.89
SCE-FK1810	18.00	10.00	P2	178.81
SCE-FK1812	18.00	12.00	P2	186.27
SCE-FK1816	18.00	16.00	P2	206.14
SCE-FK1824	18.00	24.00	P2	260.78
SCE-FK2412	24.00	12.00	P2	196.93
SCE-FK1208SS	12.00	8.00	P2	379.99
SCE-FK1210SS	12.00	10.00	P2	409.79
SCE-FK1212SS	12.00	12.00	P2	437.11
SCE-FK1216SS	12.00	16.00	P2	496.72
SCE-FK1218SS	12.00	18.00	P2	524.03
SCE-FK1224SS	12.00	24.00	P2	552.60
SCE-FK1512SS	15.00	12.00	P2	536.45
SCE-FK1518SS	15.00	18.00	P2	584.89
SCE-FK1524SS	15.00	24.00	P2	618.41
⚡ SCE-FK2410SS	24.00	10.00	P2	581.16
SCE-FK2412SS	24.00	12.00	P2	608.48
⚡ SCE-FK1212SS6	12.00	12.00	P2	524.53
⚡ SCE-FK1218SS6	12.00	18.00	P2	628.84
⚡ SCE-FK1224SS6	12.00	24.00	P2	663.12
⚡ SCE-FK1512SS6	15.00	12.00	P2	643.74
⚡ SCE-FK1518SS6	15.00	18.00	P2	701.87
⚡ SCE-FK1524SS6	15.00	24.00	P2	742.09

⚡ Available within 10 working days if not in stock



ACCESSORIES

Floor Stand Kit

Can be installed on most wall mounted enclosures with a width of 20 inches or more. Can also be installed on SCE Free Standing enclosures. Kits include two stands. This configuration can be ordered in special sizes. Consult a factory representative for price and delivery. For specifications, consult the Installation Manual at www.saginawcontrol.com. Made from carbon steel and finished with ANSI-61 recoatable gray finish. "SS" parts are made from stainless steel Type 304 with #4 brushed finish. "SS6" parts are made from stainless steel Type 316 with #4 brushed finish.

ACCESSORIES

Eyebolts

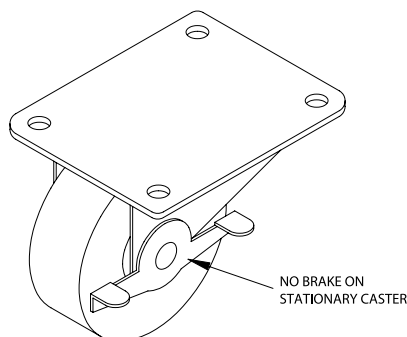
Set of two eyebolts to use for lifting an enclosure. Includes lock washers and nuts. Carbon steel plated zinc clear.

Casters

Set of 4 casters. Swivel casters have ball bearing pivots and brakes. Load rating 250 lbs for each caster. For technical information, consult the Installation Manual at www.saginawcontrol.com.

Catalog No.	Description	Quantity Per Kit	Product Code	List Price
SCE-EYE50	1/2"	2	P2	24.84
SCE-EYE63	5/8"	2	P2	28.56
SCE-EYE75	3/4"	2	P2	32.29

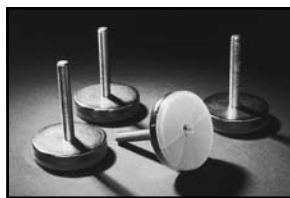
Catalog No.	Description	Size of Wheel	Product Code	List Price
SCE-CAKR	Set of 4 - 2 Rigid, 2 Swivel	3"	P2	109.28
SCE-CAKS	Set of 4 Swivel Casters	3"	P2	136.60
SCE-CAKR4	Set of 4 - 2 Rigid, 2 Swivel	4"	P2	163.91
SCE-CAKS4	Set of 4 Swivel Casters	4"	P2	191.23



Leveling Pads

Designed to attach to the bottom of the enclosure in the existing threaded holes. Allows for adjustments for uneven floors. Pads are zinc plated with a plastic base.

Catalog No.	Quantity Per Kit	Thread Size	Height	Product Code	List Price
SCE-LPD2	4	3/8 - 16	2.00	P2	37.25

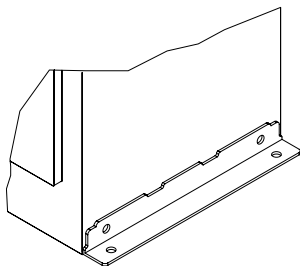


Phone (989) 799-6871

Fax (989) 799-4524



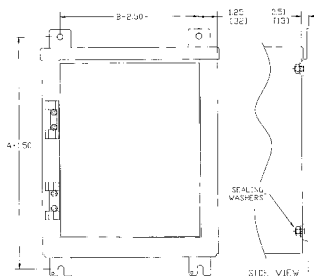
Catalog No.	Used on Enclosure Depth	Product Code	List Price
SCE-XMAIMF18	18"	P2	38.34
SCE-XMAIMF20	20"	P2	42.60
SCE-XMAIMF24	24"	P2	51.12



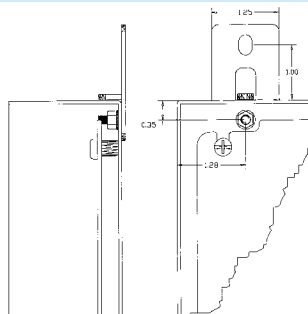
Catalog No.	Fasteners	Quantity Per Kit	NEMA Rating	Product Code	List Price
SCE-ELMFK4	Zinc Plated	4	4 & 12	P2	27.32
SCE-ELMFK6	Zinc Plated	6	4 & 12	P2	40.98
SCE-ELMFK4SS	Stainless Steel	4	4, 4X & 12	P2	49.67
SCE-ELMFK6SS	Stainless Steel	6	4, 4X & 12	P2	74.51



Catalog No.	Height (A)	Width (B)	Depth (C)	Product Code	List Price
SCE-N3RMFK4	3.25	2.00	0.51	P2	26.00



Catalog No.	Height (A)	Width (B)	Product Code	List Price
SCE-ELJMFK	2.13	1.25	P2	23.43
SCE-ELJMFKSS	2.13	1.25	P2	46.86



Phone (989) 799-6871
Fax (989) 799-4524

ACCESSORIES

Angle Iron Mounting Feet

Designed for use with freestanding type enclosure when the enclosure must be secured to a concrete floor or base. Two angle iron-mounting feet per kit. Made 0.19-inch thick carbon steel powder coated ANSI-61 gray. Hardware is included to fasten mounting foot kit to the enclosure.

Mounting Foot Kit

Made for use with all SCE Enviroline enclosures and two door wall mount enclosures. Chemical and Corrosion resistant Polyamide material rated for type 3, 3R, 4, 4X and 12. Available in kits of four or six, and with plated steel fasteners or stainless steel fasteners to maintain type 3, 3R, 4, 4X and 12 rating of your enclosure.

Type 3R Mounting Foot Kit

Designed for use on large wall mount type 3R enclosures. Four mounting Feet per kit, made of 0.075" thick carbon steel and powder coated ANSI-61 gray. Hardware is included to fasten mounting foot kit to the enclosure.

Enviroline® Junction Enclosure (ELJ) Mounting Foot Kit

Made for use with all SCE Enviroline® Series Junction Enclosures. Four mounting feet per kit, made of steel and zinc plated. Stainless Steel kit made from 304 stainless steel. Hardware is included to fasten mounting foot kit to the enclosure.

ACCESSORIES

Door Stop Kit

For use on most SCE Type 4, 4X and 12 enclosures to lock door in the open position. Door opening must be at least 12 inches and must open horizontally. All parts are made of Type 304 stainless with #4 brushed finish.

Gasket Rolls

Oil-resistant gasket made from a urethane closed cell sponge material. Self adhesive backing. UL, CSA recognized.

EMI/RFI Shielded Gasket

Specifically designed to combine outstanding attenuation characteristics and environmental protection against dust, dirt, moisture, and severe temperature variations. Made of urethane foam wrapped in nickel plated copper fabric with adhesive backing.

Conductive Tape

Copper foil tape with conductive adhesive backing. Makes it unnecessary to plate an enclosure in preparation for shielding protection. Apply the tape over unprotected steel in a small free area around the perimeter of the door. Provides protection to the steel against corrosion and rusting as well as grounding protection necessary in shielding protection.

Mechanical Defeater for V-Style Disconnects

Designed to prevent the disconnect from being turned to the on position, until the master door is shut and the handle or latch is in the closed/latched position. Works with most standard enclosures with SCE three-point door hardware or quarter turn latches.

Catalog No.	Finish	Product Code	List Price
SCE-DSTOPK	Stainless Steel	P2	67.05

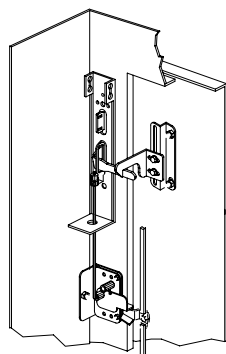


Catalog No.	Length	Size	Product Code	List Price
SCE-GA14X1	40 Feet	0.25 x 1.00	P2	29.80
SCE-GA14X75	40 Feet	0.25 x 0.75	P2	28.56
SCE-GA18X75	80 Feet	0.13 x 0.75	P2	21.11

Catalog No.	Length	Size	Product Code	List Price
SCE-EMIG	7 Feet	0.25 x 1.00	P2	119.22

Catalog No.	Length	Size	Product Code	List Price
SCE-SLT	50 Feet	3 MILS x 1.00	P2	144.05

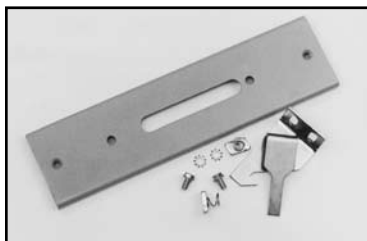
Catalog No.	Description	Product Code	List Price
SCE-MDV	Mechanical Defeater	P2	181.05



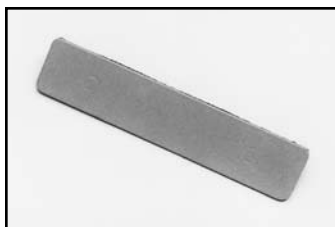
Phone (989) 799-6871
Fax (989) 799-4524



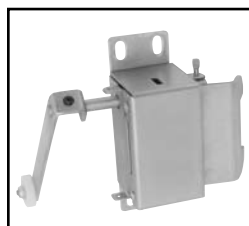
Catalog No.	Description	Product Code	List Price
SCE-UA400V	"U" Style to 400 Amp Style	P2	47.19
SCE-UAV	"U" Style to V Style	P2	47.19



Catalog No.	Description	Product Code	List Price
SCE-ABDCP	Carbon Steel for Allen-Bradley F/D Cutout	P2	42.22
SCE-DCP	Carbon Steel for Standard SCE Cutout	P2	42.22
SCE-DCPSS	Stainless Steel for Standard SCE Cutout	P2	53.40



Catalog No.	Description	Quantity Per Kit	Product Code	List Price
SCE-MI2	Mechanical Interlock	1	P2	136.60



Catalog No.	AMPS	Hz	Volt	Product Code	List Price
SCE-E115I	.100 / .63	50/60	115	P2	144.68



Catalog No.	AMPS	Hz	Volt	Product Code	List Price
SCE-EKDF	10	60	120	P2	36.21



ACCESSORIES

Disconnect Adapter Kit

Designed to convert a SCE - (U) style enclosure to a (V) style. Will accept the following: Allen-Bradley 1494V; Culter-Hammer C361/C371; General Electric Type TDA; ITE Max-Flex FHOH; Square D Class 9422. Made from heavy gauge steel and powder coated ANSI-61 gray.

Blank Disconnect Cover Plate

Designed to cover disconnect cutouts in the flange of the enclosure and have an oil-resistant gasket to seal against oil, dust, dirt, and water. Made of heavy gauge steel and powder coated ANSI-61 gray. Stainless plate is made of Type 304 stainless with #4 brushed finish.

Mechanical Interlock

Designed for use with Enviroline two door enclosures to interlock the master door to the slave door.

Electrical Interlock

Designed to provide a safety lockout on an enclosure when the circuits are energized. UL recognized. Works with SCE hardware.

Electrical Interlock Defeater

Designed to provide a key operated momentary contact switch with the contacts normally closed. Turning the key disengages the circuit to the electrical interlock, allowing access to the enclosure. May be used with SCE-E1151 Electrical Interlock. 4 amp, 125 vac.

ACCESSORIES

1/4 Turn Door Latch Inserts

Designed to replace black quarter turn latches when additional security is required.

Slotted 2 x 4 Door Latch

Catalog No.	Qty. Per Kit	Finish	Product Code	List Price
SCE-DLSB	1	Chrome	P2	17.38
SCE-DLSBB	1	Black	P2	17.38
SCE-DLSSB	1	Stainless	P2	42.22



Wing Knob Door Latch

Catalog No.	Qty. Per Kit	Finish	Product Code	List Price
SCE-DLWKC	1	Chrome	P2	17.38
SCE-DLWKF	1	Black	P2	17.38



Padlocking Wing Knob Latch

Catalog No.	Qty. Per Kit	Finish	Product Code	List Price
SCE-PLWKB	1	Black	P2	19.87



7mm Triangular Latch with Key

Catalog No.	Qty. Per Kit	Finish	Product Code	List Price
SCE-DL7TE	1	Chrome	P2	17.38



Coinproof Door Latch

Catalog No.	Qty. Per Kit	Finish	Product Code	List Price
SCE-DLCA	1	Chrome	P2	14.90



5mm Double Bit Door Latch with Key

Catalog No.	Qty. Per Kit	Finish	Product Code	List Price
SCE-DL5MDB	1	Chrome	P2	12.91
SCE-DL5MDBB	1	Black	P2	12.91



Enviroline® Series Handles

Designed for use in the Enviroline® Series enclosures, for a quick and easy conversion from the standard quarter turn latch with no added holes or cutouts necessary for installation.

Catalog No.	Description	Qty. Per Kit	Product Code	List Price
SCE-ELKL	Keylocking Handle	1	P2	62.09
SCE-ELPL	Padlocking Handle	1	P2	62.09



Padlocking Housing Latch

Catalog No.	Qty. Per Kit	Finish	Product Code	List Price
SCE-PLHG	1	Black	P2	17.38



Keylocking Wing Knob Latch

Catalog No.	Qty. Per Kit	Finish	Product Code	List Price
SCE-KLWN	1	Chrome	P2	34.77
SCE-KLWNB	1	Black	P2	34.77



Keylock Door Latch

Catalog No.	Qty. Per Kit	Finish	Product Code	List Price
SCE-DLKLD	1	Chrome	P2	27.32
SCE-DLKLDDB	1	Black	P2	27.99



7mm Square Door Latch with Key

Catalog No.	Qty. Per Kit	Finish	Product Code	List Price
SCE-DL7SC	1	Chrome	P2	17.38



8mm Square Door Latch with Key

Catalog No.	Qty. Per Kit	Finish	Product Code	List Price
SCE-DL8SB	1	Black	P2	12.91
SCE-DL8SC	1	Chrome	P2	12.91



Non-Locking "T" Handle

Catalog No.	Qty. Per Kit	Finish	Product Code	List Price
SCE-NLTH	1	Chrome	P2	24.84



Key-Locking "T" Handle

Catalog No.	Qty. Per Kit	Finish	Product Code	List Price
SCE-ELKLT	1	Chrome	P2	39.19

Enviroline® Three-Point Latch Kit

Designed for use with all Enviroline® Series enclosures. This latch kit will add a two or three point latching system to the enclosures with easy to cut and install rod guides and 5/16 inch round rods with rollers for a strong easy functioning latching system. No added holes or cutouts in enclosure necessary for installation.

Catalog No.	Qty. Per Kit	Product Code	List Price
SCE-3PTL	1	P2	62.09



ACCESSORIES

Mini Quarter Turn Latches

Designed for use on ELJ enclosures and window kits.

Catalog No.	Finish	Qty. Per Kit	Product Code	List Price
SCE-MINQ	Chrome	1	P2	9.94
SCE-MINQB	Black	1	P2	9.94



"SCE" Handle

Designed for use on custom and stock SCE enclosures. Can be used as replacements for installed SCE hardware when a different locking mechanism is desired. 7" and 5" lengths for different size enclosures. Black zinc die cast. For 2 or 3 point latch, use SCE-ARK Door Rod Kit.

Catalog No.	Description	Length	Qty. Per Kit	Product Code	List Price
SCE-PCH5	Coinproof/Padlocking	5 In.	1	P2	86.93
SCE-PH5	Padlocking	5 In.	1	P2	86.93
SCE-PKH5	Keylocking/Padlocking	5 In.	1	P2	86.93
SCE-PCH5-7SC	7 mm Square Insert	5 In.	1	P2	86.93
SCE-PCH7	Coinproof/Padlocking	7 In.	1	P2	99.34
SCE-PH7	Padlocking	7 In.	1	P2	99.34
SCE-PKH7	Keylocking/Padlocking	7 In.	1	P2	99.34
SCE-PCH7-7SC	7 mm Square Insert	7 In.	1	P2	99.34



SCE-PCH5
SCE-PCH7



SCE-PKH5
SCE-PKH7



SCE-PH5
SCE-PH7



SCE-PCH5-7SC
SCE-PCH7-7SC

Mini Quarter Turn Latch Options

304 Stainless Steel Padlock for Miniature Quarter Turn. (ELJ & HWK)

Catalog No.	Qty. Per Kit	Product Code	List Price
SCE-MINQPL	1	P2	8.52



Black Key Locking Lever Knob for Miniature Quarter Turn. (ELJ & HWK)

Catalog No.	Qty. Per Kit	Product Code	List Price
SCE-MINQKLB	1	P2	49.52



Black Non-Locking Lever Knob for Miniature Quarter Turn. (ELJ & HWK)

Catalog No.	Qty. Per Kit	Product Code	List Price
SCE-MINQLB	1	P2	28.56



Black 6 mm Square Miniature Quarter Turn with Key. (ELJ & HWK)

Catalog No.	Qty. Per Kit	Product Code	List Price
SCE-MINQ6MS	1	P2	34.19



28 mm Cam, Plated Steel for use with Miniature Quarter Turns on Hinged Window Kits. (HWK)

Catalog No.	Qty. Per Kit	Product Code	List Price
SCE-105419	1	P2	2.04



15 mm Cam, Plated Steel for use with Miniature Quarter Turns on ELJ Enclosures. (ELJ)

Catalog No.	Qty. Per Kit	Product Code	List Price
SCE-112984	1	P2	1.73



ACCESSORIES

Flush Swing Handles

Designed for use on custom and stock SCE enclosures. Can be used as replacements on SCE Work stations when a different locking mechanism is required. Zinc die cast metal powder coated black.

Catalog No.	Description	Qty. Per Kit	Product Code	List Price
SCE-FSH2	Keylocking	1	P2	63.34
SCE-FSH4	8mm Square Lock	1	P2	63.34
SCE-FSH6	Keylocking/Padlocking	1	P2	81.96
SCE-FSH8	Padlocking	1	P2	72.03



SCE-FSH2



SCE-FSH4



SCE-FSH6



SCE-FSH8

Pull Handle

Designed for use as a handle on enclosures. Handle is a steel tube plastic coated black with black molded polyamide plastic end stays.

Catalog No.	Qty. Per Kit	Size	Product Code	List Price
SCE-UHK13	1	3.15 x 13.00	P2	39.74



Aluminum Rod Kit With Rollers

Catalog No.	Qty. Per Kit	Product Code	List Price
SCE-ARK36	1	P2	115.23



Pull Handles - 4"

Designed for use on keyboard drawers, swingout panels, etc. Mounting hardware is included.

Catalog No.	Finish	Hole Center	Qty. Per Kit	Product Code	List Price
SCE-APH	Aluminum	4.00	1	P2	7.46



SCE-APH

316 Stainless Steel Handle

Catalog No.	Description	Length	Qty. Per Kit	Product Code	List Price
SCE-SSPCH5	Coinproof/Padlocking	5	1	P2	173.86
SCE-SSPH5	Padlocking	5	1	P2	173.86



Padlock Kit For Junction Boxes

Designed for "CH", and "CHNF" enclosures. Maintains water-tight and dust-tight seal. Made from plated steel.

Catalog No.	Qty. Per Kit	Product Code	List Price
SCE-PLKJIC	1	P2	9.94



ACCESSORIES

Quick Release Clamp Assembly

Designed for quick access to an enclosure with standard screw clamps. Clamps can be used on Type 4, 4x, and 12 enclosures.

Catalog No.	Enclosure Type	Finish	Qty. Per Kit	Product Code	List Price
SCE-QR1	"CH"	Chrome	1	P2	9.94
SCE-QR1SS	"CH"	Stainless	1	P2	19.87
SCE-QR2	"LP"	Stainless	2	P2	22.97



SCE-QR1



SCE-QR2

Replacement Clamps

Designed as replacement clamps for SCE enclosures.

Catalog No.	Enclosure Type	Finish	Qty. Per Kit	Product Code	List Price
SCE-DRL-5	"CH"	Chrome	2	P2	4.96
SCE-DRL-6	"CH"	Stainless	2	P2	7.46
SCE-DRL-3K	"LP"	Chrome	2	P2	7.46
SCE-DRL-4K	"LP"	Stainless	2	P2	12.42



SCE-DRL-5 / SCE-DRL-6



SCE-DRL-3K / SCE-DRL-4K

Clamping Nuts

Clamping nuts with a #10-32 retained nut to fit all rack mounting angles and rack mounting frames to provide tapped holes. Nuts are zinc plated.

Catalog No.	Qty. Per Kit	Product Code	List Price
SCE-CN1032	20	P2	32.31



Channel Nuts

Designed for use in free-standing enclosures to allow mounting of additional equipment.

Catalog No.	Description	Qty. Per Kit	Product Code	List Price
SCE-PS1420CN	1/4 - 20 Strut Nut	20	P2	42.22
SCE-PS3816CN	3/8 - 16 Strut Nut	20	P2	42.22



SCE-PS1420CN



SCE-PS3816CN

Channel Nut Kit

Designed for use with the SCE light channels on the inside top of larger enclosures. For quick easy installation of fluorescent lights.

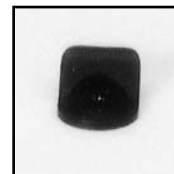
Catalog No.	Qty. Per Kit	Product Code	List Price
SCE-PS1032CN	20	P2	36.02



Finger Pull

Designed for use as pull latch for the removable wireway.

Catalog No.	Finish	Qty. Per Kit	Product Code	List Price
SCE-ELFP	Black	1	P2	9.94



ACCESSORIES

Drip Shield Kit For Type 12 & 4 Enclosures

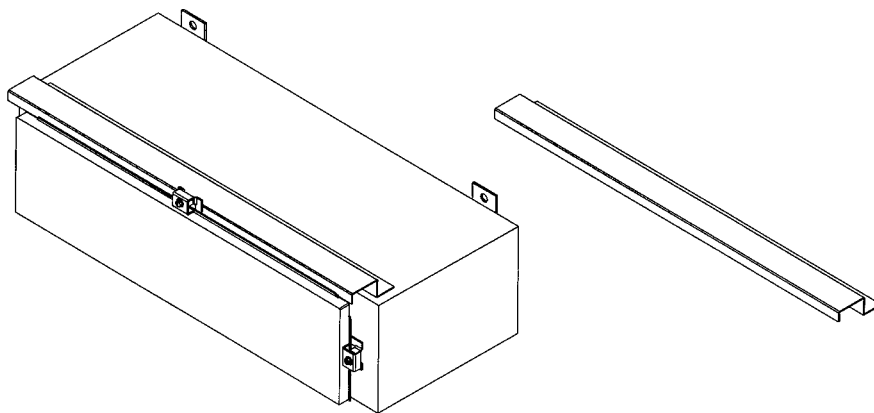
Protects door against dripping water and settling dust. Stainless steel screws and sealing washers are supplied with each kit. Made of steel and finished with ANSI-61 gray powder coating.

Stainless Steel Drip Shield Kit For Type 4X Enclosures

Protects door against dripping water and settling dust. Furnished with stainless steel screws and sealing washers. Kit made of stainless steel Type 304.

Catalog No.	Fits Enclosure Width (B)	Product Code	List Price
SCE-DS12N4	12.00	P2	35.83
SCE-DS16N4	16.00	P2	40.80
SCE-DS20N4	20.00	P2	43.28
SCE-DS24N4	24.00	P2	50.74
SCE-DS30N4	30.00	P2	53.22
SCE-DS36N4	36.00	P2	56.40
SCE-DS42N4	42.00	P2	60.31
SCE-DS48N4	48.00	P2	68.82
SCE-DS60N4	60.00	P2	80.17
SCE-DS72N4	72.00	P2	90.43

Catalog No.	Fits Enclosure Width (B)	Product Code	List Price
⚡ SCE-DS12SS	12.00	P2	81.96
SCE-DS16SS	16.00	P2	89.41
SCE-DS20SS	20.00	P2	96.86
⚡ SCE-DS24SS	24.00	P2	104.31
SCE-DS30SS	30.00	P2	116.72
SCE-DS36SS	36.00	P2	129.14
SCE-DS42SS	42.00	P2	141.56
SCE-DS48SS	48.00	P2	158.95
⚡ SCE-DS60SS	60.00	P2	181.31
⚡ SCE-DS72SS	72.00	P2	216.07



⚡ Available within 10 working days if not in stock

Phone (989) 799-6871

Fax (989) 799-4524



Catalog No.	Height	Width	Product Code	List Price
SCE-FS1212	12.00	12.00	P2	146.53
SCE-FS1818	18.00	18.00	P2	183.79
SCE-FS2424	24.00	24.00	P2	221.04

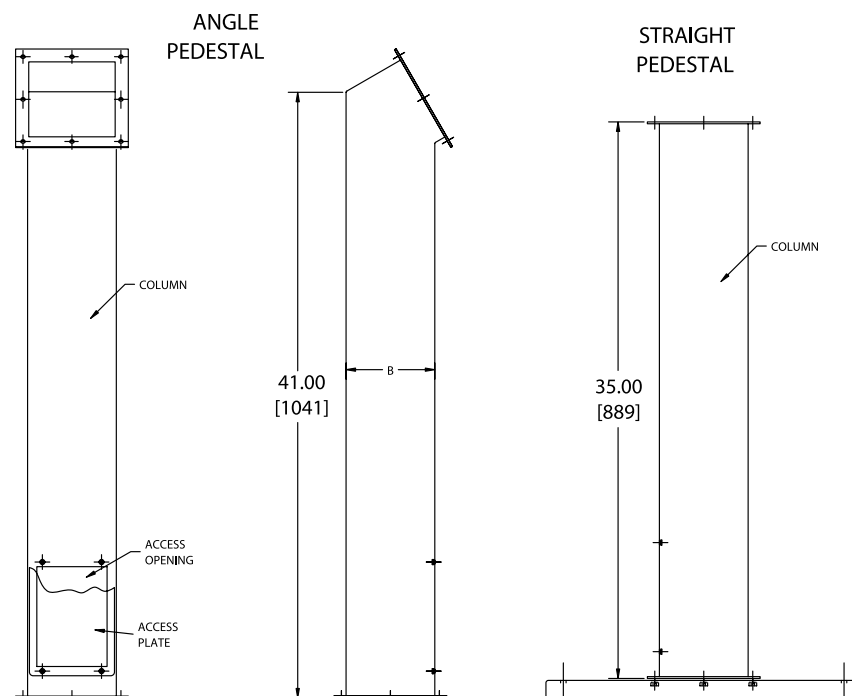
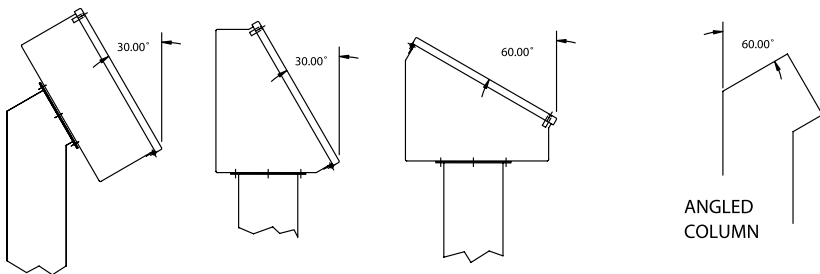


ACCESSORIES

Folding Shelf

Folding shelves can be installed on the inside or outside of large enclosures. They are designed to support test equipment and programmers. Locks in the horizontal position. When not in use, shelf can be folded down. Made of heavy gauge steel and powder coated white.

Catalog No.	Description	Height	Width	Product Code	List Price
SCE-18SBASE	Pedestal Base	18.00	18.00	P2	111.76
SCE-24SBASE	Pedestal Base	24.00	24.00	P2	253.32
SCE-44CCOL	Straight Column	4.00	4.00	P2	183.79
SCE-44PBCOL	Angled Column	4.00	4.00	P2	218.56
SCE-66CCOL	Straight Column	6.00	6.00	P2	275.68
SCE-66PBCOL	Angled Column	6.00	6.00	P2	327.83



Accessory Columns and Bases

Designed to allow enclosures to be floor mounted. Columns can be mounted to either size base. Columns have flanges at each end and a gasketed access plate. Bases are to be bolted to the floor gasket and mounting hardware included. For technical information, consult the Installation Manual at www.saginawcontrol.com. Pedestals and bases are ANSI-61 gray powder coated.

ACCESSORIES

Exterior Print Pocket

Designed for use on the exterior of an enclosure or door to keep prints clean and easy to access. Exterior print pockets have a hinged sloping cover and padlocking hasp. Made of steel and finished with ANSI-61 gray powder coating.



Media Storage Pockets

Designed to provide storage for electronic media. Padlockable. This pocket is not fire proof. Made from steel and powder coated white.

Catalog No.	Description	Height	Width	Depth	Product Code	List Price
SCE-CDPK	CD Pocket	6.00	6.00	2.00	P2	124.18
SCE-DISPK	Disk Pocket	4.31	5.50	1.50	P2	124.18



Print Pockets

Designed to provide storage for prints on the interior of an enclosure. Intended for use as a replacement or as an additional pocket. Made from white Polypropylene material.

Catalog No.	Description	Height	Width	Depth	Product Code	List Price
SCE-PP7701	Small Standard Print Pocket	6.50	6.50	1.00	P2	22.35
SCE-PP101201	Large Standard Print Pocket	10.00	11.50	1.00	P2	24.84



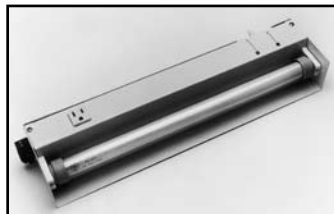
Print Pockets

Designed to provide storage for prints on the interior of an enclosure. Intended for use as a replacement or as an additional pocket. Made from steel and powder coated white.

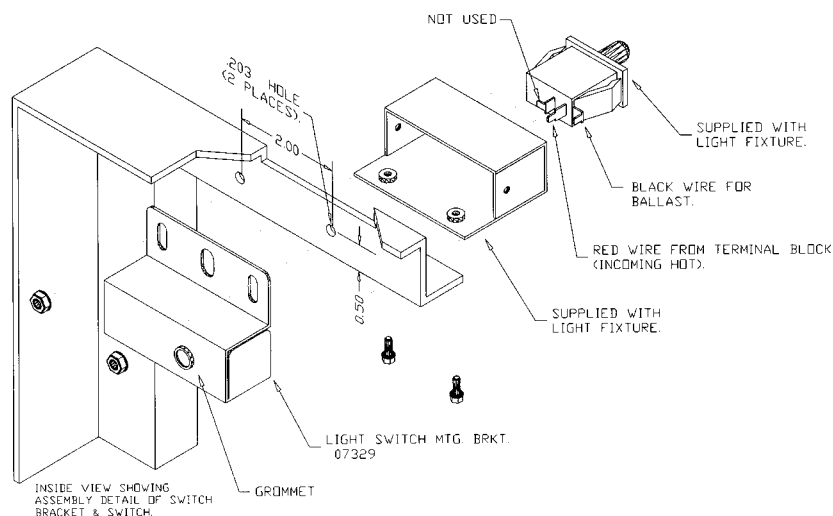
Catalog No.	Description	Height	Width	Depth	Product Code	List Price
SCE-PP101203	Extra Deep Print Pocket	10.00	11.50	3.00	P2	27.32



Catalog No.	Height (A)	Width (B)	Depth (C)	AMP	VAC	Hz	Product Code	List Price
SCE-LF16D18	2.75	4.25	18.18	0.53	120.00	60	P2	180.85
SCE-LF16D24	2.75	4.25	24.18	0.53	120.00	60	P2	204.96
SCE-LF16D18NO (No Outlet)	2.75	4.25	18.18	0.53	120.00	60	P2	180.85
SCE-LF16D24NO (No Outlet)	2.75	4.25	24.18	0.53	120.00	60	P2	204.96



Catalog No.	Height (A)	Width (B)	Depth (C)	Product Code	List Price
SCE-LSMB	2.00	2.68	1.00	P2	25.56



Catalog No.	Product Code	List Price
SCE-LSA	P2	38.34



ACCESSORIES

Fluorescent Light Fixture

Designed to provide interior lighting for an enclosure. Can be mounted to light channels in top of enclosure or on front flange. Door activated adjustable switch. Switch can be removed and relocated. 115 volt convenience receptacle with ground (12 amp max). Appliance coupler. Mounting hardware is included. 15-watt fluorescent bulb with plastic protective light diffuser is included. U/L recognized component and CSA approved. Made from steel and powder coated white.

Light Switch Mounting Bracket

Designed to remote mount the door activated light switch when space is limited. Light Switch Mounting Bracket may be used with SCE-LF16D18, SCE-LF16D18NO, SCE-LF16D24 & SCE-LF16D24NO.

Full Light Switch Assembly

Designed to remote mount the light switch when space is limited.

ACCESSORIES

Removable Wire Cover

Designed to provide a "false" bottom in an enclosure with a bottom flange larger than 7 inches. Cover is bolted to a frame made from heavy gauge steel. Opens with a finger pull latch. A plate is provided to connect wire covers for a continuous bottom. Made from steel and powder coated white.

Oil Tight Hole Seals

Extra push button holes can be sealed against dust, dirt, oil, and water with a SCE hole seal. Seals will cover most pushbutton hole sizes. Hole seals come with oil-resistant gasket, #10-32 x 3/8" stud, zinc plated wing nut and plated steel back plate. All SCE standard colors are available as well as stainless steel and plated steel.

Hole Seals

Extra pushbutton holes can be sealed against dust, dirt, oil and water. Hole seals are made of corrosion and UV resistant fiberglass, and supplied with gasket and backing nut.

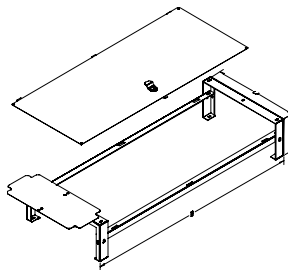
UL recognized 3, 4, 4X 12, 6P
IEC tested to IP66 and IP68

Touch Up Paint

12 ounce spray cans.

*Consult factory for pricing of custom colors.

Catalog No.	Length (A)	Width (B)	Depth (C)	Enclosure Depth	Product Code	List Price
SCE-14RMW	6.00	35.00	14.00	18.00	P2	198.69
SCE-20RMW	6.00	35.00	20.00	24.00	P2	223.52



Catalog No.	Description	Diameter Inches	Diameter MM	Max. Hole Diameter Inches	Max. Hole Diameter MM	Quantity Per Kit	Product Code	List Price
SCE-ASPB	Steel	1.75	44	1.25	30	1	P2	5.13
SCE-ASPBG	Steel	1.22	31	.875	22	1	P2	4.10
SCE-ASPB-SS	Stainless Steel	1.75	44	1.25	30	1	P2	19.13
SCE-ASPBG-SS	Stainless Steel	1.22	31	.875	22	1	P2	17.88



Catalog No.	Outside Diameter	Min. Hole Size	Max. Hole Size	Product Code
SCE-HPSERIES1	1.00	0.50	0.81	F1
SCE-HPSERIES15	1.20	0.88	0.88	F1
SCE-HPSERIES2	1.50	1.00	1.28	F1
SCE-HPSERIES3	2.00	1.38	1.75	F1
SCE-HPSERIES4	2.75	2.00	2.56	F1



Catalog No.	Color	Product Code	List Price
SCE-TU01	Beige	P2	45.16
SCE-TU02	Blue	P2	45.16
SCE-TU04	Brown	P2	45.16
SCE-TU05	White	P2	45.16
SCE-TU06	Green	P2	45.16
SCE-TU07	Gray	P2	45.16
SCE-TU08	Orange	P2	45.16
SCE-TU09	ANSI-61 Gray	P2	45.16
SCE-TU10	Custom	P2	45.16

Catalog No.	Height (A)	Width (B)	Depth (C)	Product Code	List Price
SCE-24KB	12.25	24.00	5.62	P2	447.04



Catalog No.	Height (A)	Width (B)	Depth (C)	Enclosure Depth	Product Code	List Price
SCE-KBS	3.00	20.00	14.00	24.25	P2	372.54
SCE-KBS32	3.00	20.00	14.00	32.25	P2	372.54



ACCESSORIES

Keyboard Kit

Designed to house a keyboard input. Mounted on the outside of an enclosure. Enviroline type construction with concealed hinge and 1/4 turn latches. Mouse drawer. Made of heavy gauge steel and powder coated ANSI-61 gray.

Pull-Out Keyboard Drawer

Designed to hold a keyboard and mouse on a separate pull-out shelf. Mounts between mounting channels. Made of heavy gauge steel with a white powder coat finish. A mouse pad is included.

PROGRAM PORTS

Application -

This product line is designed to help increase your compliance with NFPA 70E and reduce the risk of personal exposure of arc flash by reducing the need to access the enclosure, by bringing GFCI utility outlets and data interface ports outside the enclosures.

Construction -

- Transparent sealed cover.
- Quick release padlocking latch.
- 120 VAC Simplex Outside.
- Available with Ethernet, Control Net, Serial or Device Net data interface ports

Options -

- Contact the factory for availability of any other data interface ports or type 4X designs.

Finish -

Powder coated Light Gray.

Industry Standards -

- UL Recognized Type 1, 12 & 4
- CSA Approved Type 1, 12 & 4
- CE & NFPA 70E Compliant

Catalog No.	Qty. Per Kit	Interface	Type	Product Code
P-R2-F3R3-U450	1	(Ethernet)	4	P4

RJ-45 CAT5 F/F connector with 120 VAC Simplex outlet & 3 Amp circuit breaker



Catalog No.	Qty. Per Kit	Interface	Type	Product Code
P-B15-F3R3-U450	1	(Control Net)	4	P4

RJ-45 CAT5 F/F connector with 120 VAC Simplex outlet & 3 Amp circuit breaker



Catalog No.	Qty. Per Kit	Interface	Type	Product Code
P-Q7-F3R3-U450	1	(Serial)	4	P4

DB9 F/M connector with 120 VAC Simplex outlet & 3 Amp circuit breaker



Catalog No.	Qty. Per Kit	Interface	Type	Product Code
P-Q9-F3R3-U450	1	(Serial)	4	P4

DB9 M/F connector with 120 VAC Simplex outlet & 3 Amp circuit breaker



Catalog No.	Qty. Per Kit	Interface	Type	Product Code
P-D4-H3R3-U450	1	(Device Net)	4	P4

Network Tap PC Board with 120 VAC Simplex outlet & 3 Amp circuit breaker



Catalog No.	Qty. Per Kit	Interface	Type	Product Code
P-B15-K3RF3-U450	1	(Control Net)	4	P4
P-B15-K4RF3-U450	1	(Control Net)	12	P4



RJ-45 CAT5 F/F connector with 120 VAC
Duplex GFCI with internal Simplex GFCI & 3 Amp circuit breaker

Catalog No.	Qty. Per Kit	Interface	Type	Product Code
P-Q7-K3RF3-U450	1	(Serial)	4	P4
P-Q7-K4RF3-U450	1	(Serial)	12	P4



DB9 F/M connector with 120 VAC
Duplex GFCI with internal Simplex GFCI & 3 Amp circuit breaker

Catalog No.	Qty. Per Kit	Interface	Type	Product Code
P-Q9-K3RF3-U450	1	(Serial)	4	P4
P-Q9-K4RF3-U450	1	(Serial)	12	P4



DB9 M/F connector with 120 VAC
Duplex GFCI with internal Simplex GFCI & 3 Amp circuit breaker

Catalog No.	Qty. Per Kit	Interface	Type	Product Code
P-R2-K3RF3-U450	1	(Ethernet)	4	P4
P-R2-K4RF3-U450	1	(Ethernet)	12	P4



RJ-45 CAT5 F/F connector with 120 VAC
Duplex GFCI with internal Simplex GFCI & 3 Amp circuit breaker

Catalog No.	Qty. Per Kit	Interface	Type	Product Code
P-D4-M3RF3-U450	1	(Device Net)	4	P4
P-D4-M4RF3-U450	1	(Device Net)	12	P4



Network Tap PC Board with 120 VAC
Duplex GFCI with internal Simplex GFCI & 3 Amp circuit breaker

PROGRAM PORTS

Application -

This product line is designed to help increase your compliance with NFPA 70E and reduce the risk of personal exposure of arc flash by reducing the need to access the enclosure, by bringing GFCI utility outlets and data interface ports outside the enclosures.

Construction -

- Transparent sealed cover.
- Quick release padlocking latch.
- GFCI Ground fault circuit interrupters with exclusive three outlet design, GFCI Duplex outside the enclosure with GFCI Simplex inside.
- Available with Ethernet, Control Net, Serial or Device Net data interface ports

Options -

- Contact the factory for availability of any other data interface ports or type 4X designs.

Finish -

Powder coated Light Gray.

Industry Standards -

- UL Recognized Type 1, 12 & 4
- CSA Approved Type 1, 12 & 4
- CE & NFPA 70E Compliant